

DATA SHEET

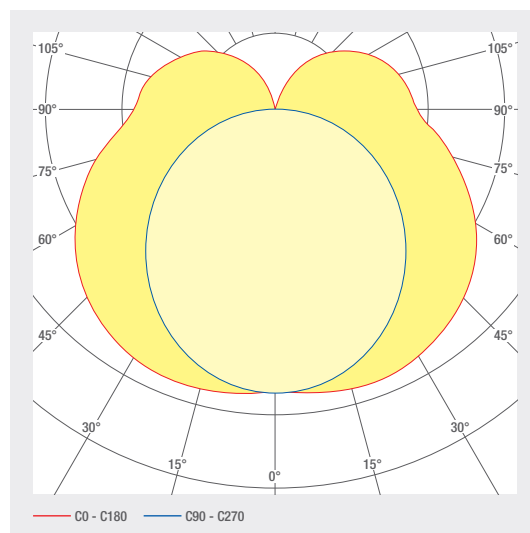
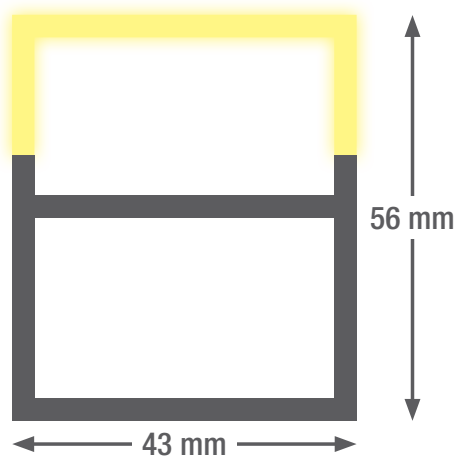
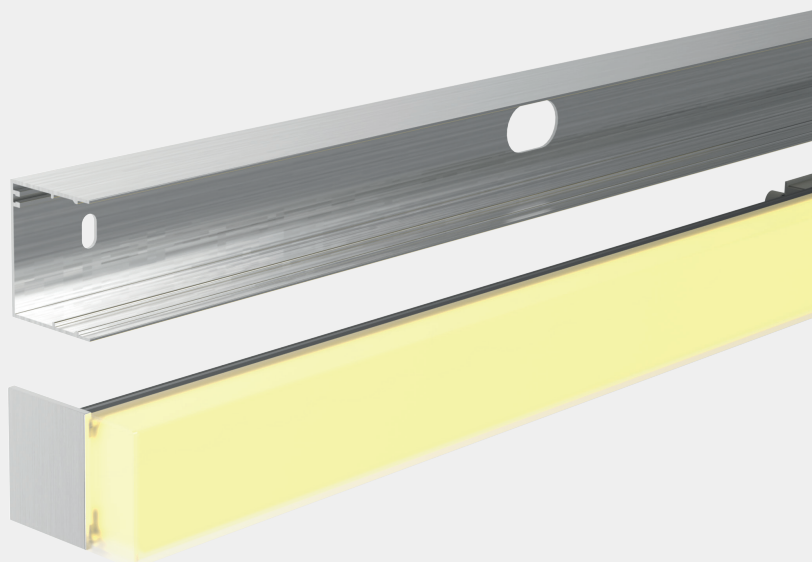
smartMIRROR DALI

Elegant, compact ceiling and wall light with an outstanding lighting effect. The smartMIRROR impresses with its luminosity and slimline design. Thanks to the cubic diffuser, the luminaire also emits indirect light. The light has IP44 protection and is therefore ideal as a mirror light in the bathroom.

- Material Housing: Anodised aluminium
- With integrated control gear
- Cover made of opal PMMA for absolutely homogeneous illumination
- Die-cast aluminium end caps, painted in profile colour, no visible screws
- Service life: 50 000 h LM-80 > 50 000 h
- Energy efficiency: > 120 lm/W
- Optional: RAL or NCS powder coating
- Compact dimensions

SURFACE-MOUNTED LUMINAIRES

5.63 smartMIRROR DALI



5.63 smartMIRROR DALI

SURFACE-MOUNTED LUMINAIRES

ART. NO.	DESIGNATION	CHARACTERISTICS					
1007840-D	smartMIRROR 500	230 VAC INPUT	19 W	DIFFUSED BEAM	2106 LM		DALI CONTROL
1007841-D	smartMIRROR 500	230 VAC INPUT	19 W	DIFFUSED BEAM	2169 LM		DALI CONTROL
1007839-D	smartMIRROR 600	230 VAC INPUT	20 W	DIFFUSED BEAM	2376 LM		DALI CONTROL
1007624-D	smartMIRROR 600	230 VAC INPUT	20 W	DIFFUSED BEAM	2307 LM		DALI CONTROL
1007842-D	smartMIRROR 900	230 VAC INPUT	26 W	DIFFUSED BEAM	3131 LM		DALI CONTROL
1007843-D	smartMIRROR 900	230 VAC INPUT	26 W	DIFFUSED BEAM	3040 LM		DALI CONTROL
1007845-D	smartMIRROR 1200	230 VAC INPUT	27 W	DIFFUSED BEAM	3318 LM		DALI CONTROL
1007844-D	smartMIRROR 1200	230 VAC INPUT	27 W	DIFFUSED BEAM	3418 LM		DALI CONTROL
1007847-D	smartMIRROR 1500	230 VAC INPUT	29 W	DIFFUSED BEAM	3378 LM		DALI CONTROL
1007846-D	smartMIRROR 1500	230 VAC INPUT	29 W	DIFFUSED BEAM	3479 LM		DALI CONTROL

Lighting design

RELUX®

click on the Relux icon to access our lighting design data directly

Technical data

Storage temperature	-30 ... +40 °C
Max. surface temperature	65 °C
Shock rating	IK03
Protection type (IP)	IP20
Ambient temperature t_a	25 °C
Input voltage	230 V ~ 50Hz AC
Service life L80B10 (h) @ $t_a = 25^\circ\text{C}$	50000 h

1

2

3

4

5

6

7

8

9

smartBAR R 1.2

3000 K 90 CRI

Art. Nr. : 1000881

230 V ~ 50Hz / 20,5 W / IP 20

CE

smaterion ag, Zeughausstrasse 10, 8887 Mels

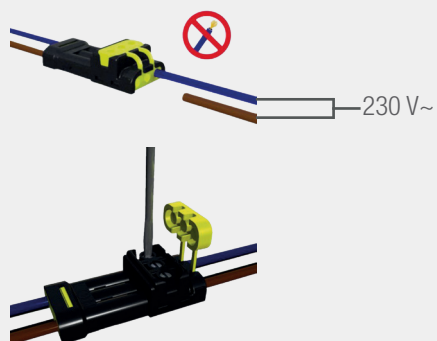
209583-01010100



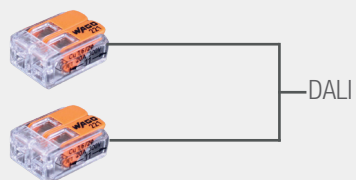
- 1 Product description
- 2 Color temperature, e.g. 3000K
- 3 Color rendering index, e.g. 90 CRI
- 4 Voltage, e.g. 230 V ~
- 5 Power, e.g. 20 W
- 6 IP protection, e.g. IP20
- 7 Item number
- 8 QR code with unique identification ID
- 9 Manufacturer address

Electrical connection

Power

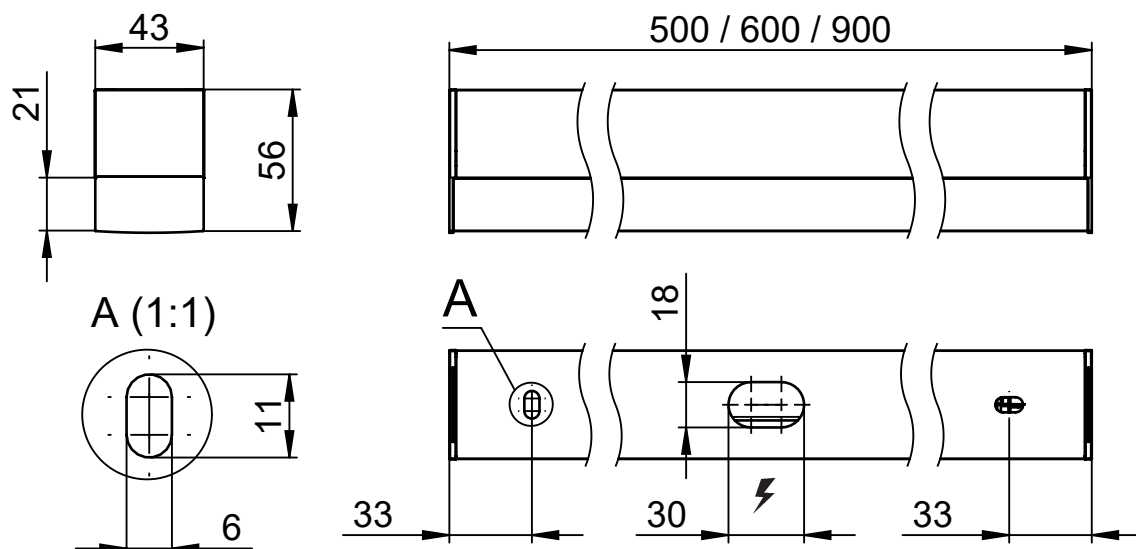


DALI

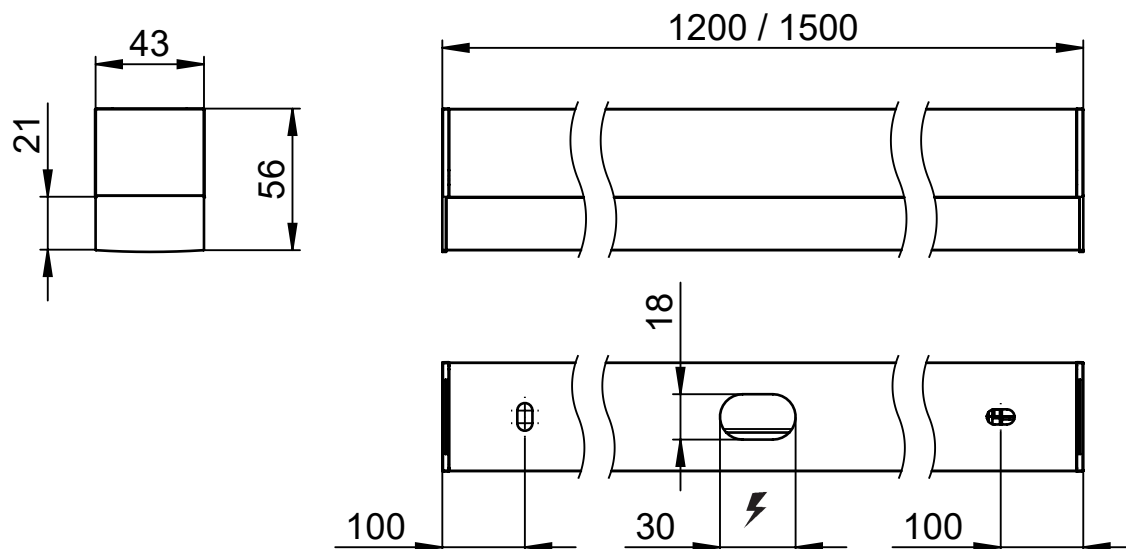


Dimensions

smartMIRROR 500 / 600 / 900



smartMIRROR 1200 / 1500



Assembly instructions




Cleaning and care


Wipe the luminaire clean using a damp, lint-free cloth. Do not scrub! If heavily soiled, wipe clean with a mild solution of warm soapy water (microfibre cloth and washing-up liquid). Do not use a scouring agent. Do not rub the luminaire dry, as the resulting static may damage the electronic components beyond repair.

Warnings


The equipment may only be installed and put into service by authorised technical personnel (electrical fitters). The luminaire is designed solely for lighting applications and is to be installed according to the installation regulations. Any other form of use or installation is considered to be improper. Failure to comply with the installation instructions can damage the luminaire beyond repair. Return to the manufacturer if any defects are identified. The installation instructions must be retained for future reference. Subject to technical changes. Not to be installed on a wet or conductive substrate. The luminaire is only to be installed, put into service or modified in any way by authorised skilled personnel (a qualified electrician). National installation regulations must be observed. Before any work is performed on the luminaire, it must be disconnected from mains. Hot plug-in is not an option and may cause damage to the luminaire! The manufacturer is not liable for damage resulting from improper/faulty installation or operation, or from unauthorised modifications to the luminaire. The light source contained in this luminaire is only to be replaced by the manufacturer, a service technician authorised by the manufacturer or a similarly qualified person. Caution, risk of electric shock! In the event of questions or queries, please contact the manufacturer.



Disconnect the luminaire from the power supply.




Caution, risk of electric shock!



DISPOSAL


The packaging must be recycled via the DSD (Green Dot) scheme or its equivalent. Dispose of the packaging correctly sorted. Waste electrical and electronic equipment must never be disposed of together with household waste. In accordance with the EU directives, the device must be disposed of in an orderly manner at the end of its service life. This means having the materials contained in the device recycled to avoid polluting the environment. Take the waste equipment to a collection point for electrical and electronic waste or to a recycling depot. For further information, please contact your local waste disposal service or your local authority.



Luminaire only suitable for application in interior spaces.

IP20

Protected against ingress of solid foreign objects with a diameter of more than 12.5 mm.



Protection class II luminaires with double insulation
Luminaire must not be connected to earth
Supply cable must be double insulated and strain relief must be correctly installed.

DALI CONTROL

The luminaire is dimmable by DALI. Please observe the DALI specifications. The DALI cable must meet the specification of a mains cable: 230V