

DATA SHEET

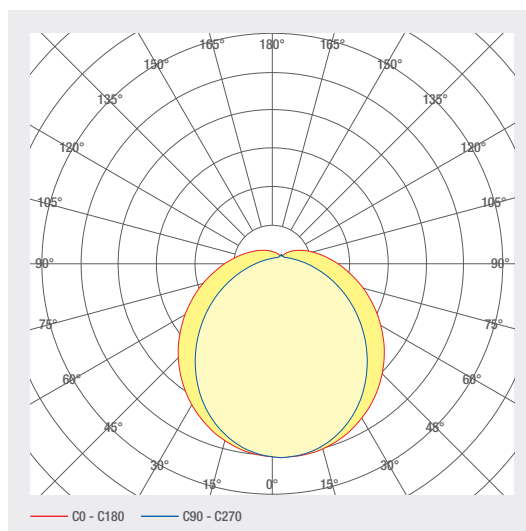
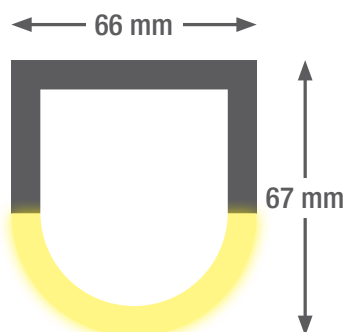
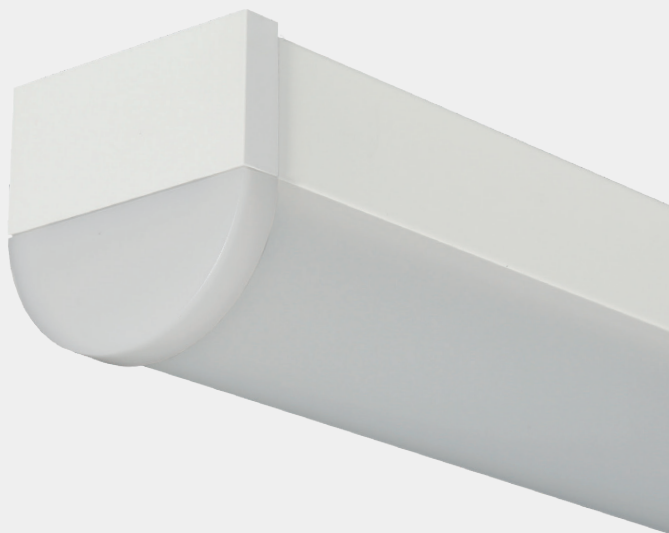
smartBAR R

An easy-to install batten luminaire with a unique price-performance ratio. Typical applications are technical rooms, underground car parks and rooms where only top-quality lighting will do.

- Housing made of sheet steel coated white
- Easy mounting and dismantling
- Energy efficiency: > 150 lm/W
- High-quality components from a European manufacturer that leads the way in quality
- ON/OFF with DIP switch
- Service life: 50 000 h LM-80 > 50 000 h
- Suitable for through-wiring
- Option: Suspension set for pendant mounting
- Optionally DALI and with emergency light module (self-test)
- On request also fitted with Tunable White
- Made in Switzerland

SURFACE-MOUNTED LUMINAIRES

5.51 smartBAR R



5.51 smartBAR R

SURFACE-MOUNTED LUMINAIRES

ART. NO.	DESIGNATION	CHARACTERISTICS						
1004573	smartBAR R 1.2 m	230 VAC INPUT	26 W	DIFFUSED BEAM	3000 K CRI>80	3570 LM		
1004573-N	smartBAR R 1.2 m	230 VAC INPUT	26 W	DIFFUSED BEAM	3000 K CRI>80	3570 LM		
1004573-D	smartBAR R 1.2 m	230 VAC INPUT	35 W	DIFFUSED BEAM	3000 K CRI>80	4463 LM		
1004575	smartBAR R 1.2 m	230 VAC INPUT	26 W	DIFFUSED BEAM	4000 K CRI>80	3749 LM		
1004575-N	smartBAR R 1.2 m	230 VAC INPUT	26 W	DIFFUSED BEAM	4000 K CRI>80	3749 LM		
1004575-D	smartBAR R 1.2 m	230 VAC INPUT	35 W	DIFFUSED BEAM	4000 K CRI>80	4970 LM		
1004572-N	smartBAR R 1.5 m	230 VAC INPUT	32 W	DIFFUSED BEAM	3000 K CRI>80	4463 LM		
1004572	smartBAR R 1.5 m	230 VAC INPUT	32 W	DIFFUSED BEAM	3000 K CRI>80	4463 LM		
1004572-D	smartBAR R 1.5 m	230 VAC INPUT	44 W	DIFFUSED BEAM	3000 K CRI>80	5940 LM		
1004574-N	smartBAR R 1.5 m	230 VAC INPUT	32 W	DIFFUSED BEAM	4000 K CRI>80	4686 LM		
1004574	smartBAR R 1.5 m	230 VAC INPUT	32 W	DIFFUSED BEAM	4000 K CRI>80	4686 LM		
1004574-D	smartBAR R 1.5 m	230 VAC INPUT	44 W	DIFFUSED BEAM	4000 K CRI>80	6213 LM		

Technical data

Storage temperature	-30 ... +65 °C
Max. surface temperature	65 °C
Shock rating	IK03
Protection type (IP)	IP40
Ambient temperature ta	25 °C
Input voltage	230 V~ 50Hz AC
Service life L80B10 (h) @ ta = 25°C	50000 h

1
smartBAR R 1.2
2
3000 K 3
90 CRI 4
230 V ~ 50Hz / 20,5 W / IP 20
7
Art. Nr. : 1000881

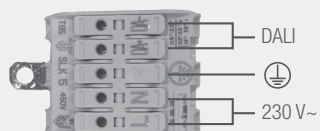

5
6


9
smaterion ag, Zeughausstrasse 10, 8887 Mels
209583-01010100

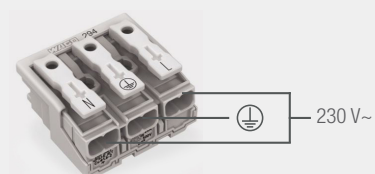
- 1 Product description
2 Color temperature, e.g. 3000K
3 Color rendering index, e.g. 90 CRI
4 Voltage, e.g. 230 V ~
5 Power, e.g. 20 W
6 IP protection, e.g. IP20
- 7 Item number
8 QR code with unique identification ID
9 Manufacturer address

Electrical connection

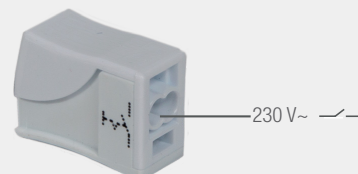
DALI



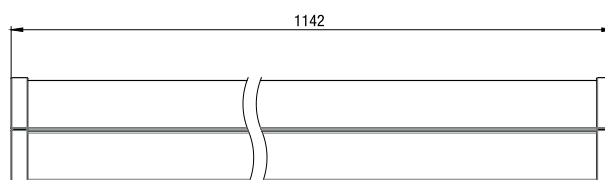
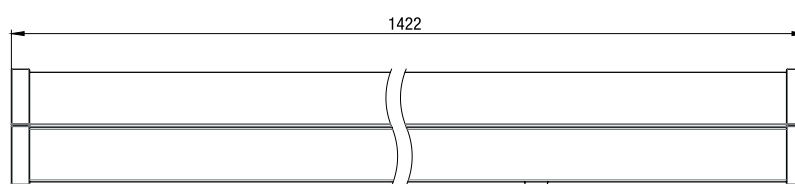
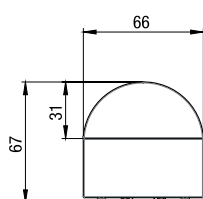
ON/OFF



NOT



Dimensions

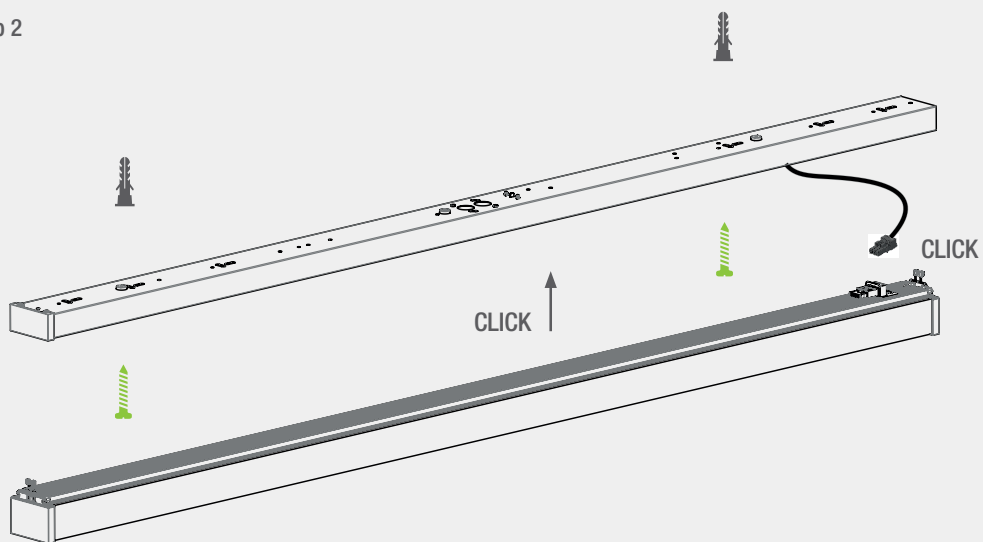


Assembly instructions

Step 1



Step 2




Cleaning and care


Wipe the luminaire clean using a damp, lint-free cloth. Do not scrub! If heavily soiled, wipe clean with a mild solution of warm soapy water (microfibre cloth and washing-up liquid). Do not use a scouring agent. Do not rub the luminaire dry, as the resulting static may damage the electronic components beyond repair.

Warnings


The equipment may only be installed and put into service by authorised technical personnel (electrical fitters). The luminaire is designed solely for lighting applications and is to be installed according to the installation regulations. Any other form of use or installation is considered to be improper. Failure to comply with the installation instructions can damage the luminaire beyond repair. Return to the manufacturer if any defects are identified. The installation instructions must be retained for future reference. Subject to technical changes. Not to be installed on a wet or conductive substrate. The luminaire is only to be installed, put into service or modified in any way by authorised skilled personnel (a qualified electrician). National installation regulations must be observed. Before any work is performed on the luminaire, it must be disconnected from mains. Hot plug-in is not an option and may cause damage to the luminaire! The manufacturer is not liable for damage resulting from improper/faulty installation or operation, or from unauthorised modifications to the luminaire. The light source contained in this luminaire is only to be replaced by the manufacturer, a service technician authorised by the manufacturer or a similarly qualified person. Caution, risk of electric shock! In the event of questions or queries, please contact the manufacturer.



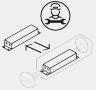
Disconnect the luminaire from the power supply.




Caution, risk of electric shock!



DISPOSAL
The packaging must be recycled via the DSD (Green Dot) scheme or its equivalent. Dispose of the packaging correctly sorted. Waste electrical and electronic equipment must never be disposed of together with household waste. In accordance with the EU directives, the device must be disposed of in an orderly manner at the end of its service life. This means having the materials contained in the device recycled to avoid polluting the environment. Take the waste equipment to a collection point for electrical and electronic waste or to a recycling depot. For further information, please contact your local waste disposal service or your local authority.




The power supply can only be replaced by smarterion as the manufacturer. Please do not attempt to replace the components yourself, as this will void the warranty and CE conformity.



The LED board(s) can only be replaced by smarterion as the manufacturer. Please do not attempt to replace the components yourself, as this will void the warranty and CE conformity.

IP40

Protected against ingress of solid foreign objects with a diameter of more than 1 mm.



Class I luminaires with earth connector. It is absolutely essential to earth the luminaire housing.