

DATA SHEET

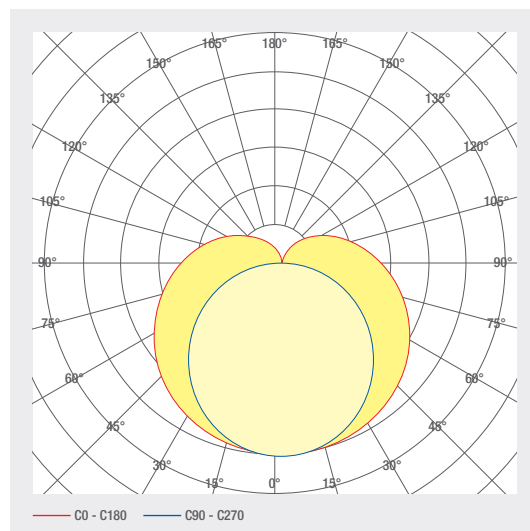
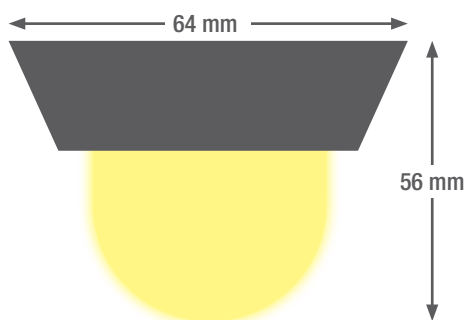
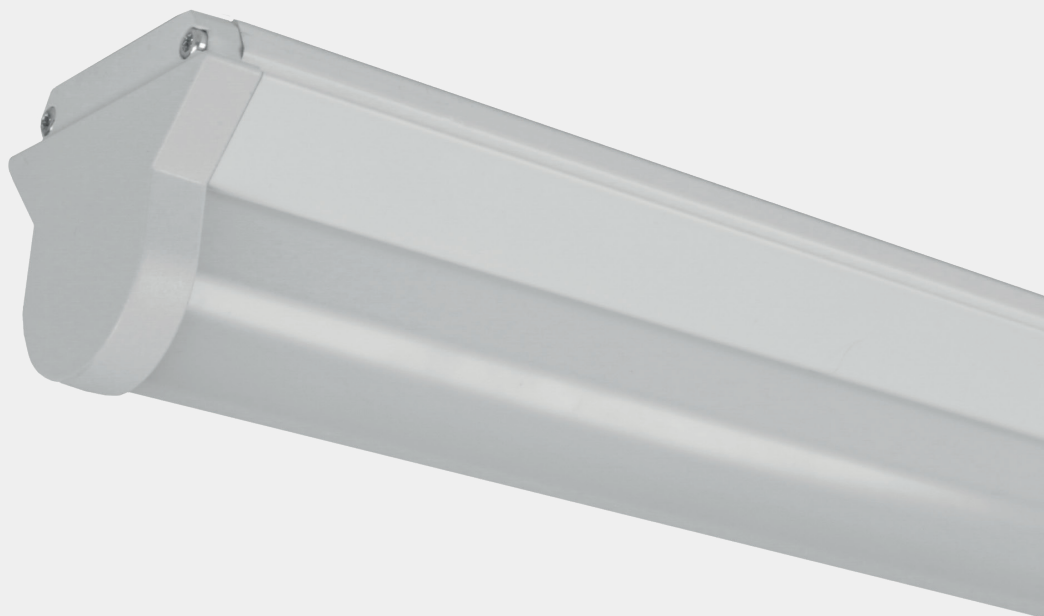
ZICE







LED system luminaire compatible with the ICE track system. This solution is therefore an ideal replacement for the refurbishment of existing T8 solutions with 36W or 58W.

- Housing made of sheet steel coated white
- Easy mounting and dismounting
- Energy efficiency: > 140 lm/W
- High-quality components from a European manufacturer that leads the way in quality
- Service life: 50 000 h LM-80 > 50 000 h
- Made in Switzerland

LED- INSERTS

3.50 ZICE



ART. NO.	DESIGNATION	CHARACTERISTICS					
75674362	System light 1.2m	230 VAC INPUT	24 W	4000 K CRI>80	3430 LM		A ↑ G
75674358	System light 1.2m	230 VAC INPUT	24 W	4000 K CRI>80	3430 LM		A ↑ G DALI CONTROL
75674363	System light 1.2m	230 VAC INPUT	24 W	6500 K CRI>80	3421 LM		A ↑ G
75674359	System light 1.2m	230 VAC INPUT	24 W	6500 K CRI>80	3421 LM		A ↑ G DALI CONTROL
75674364	System light 1.5m	230 VAC INPUT	30 W	4000 K CRI>80	4287 LM		A ↑ G
75674360	System light 1.5m	230 VAC INPUT	30 W	4000 K CRI>80	4287 LM		A ↑ G DALI CONTROL
75674365	System light 1.5m	230 VAC INPUT	30 W	6500 K CRI>80	4279 LM		A ↑ G
75674361	System light 1.5m	230 VAC INPUT	61 W	6500 K CRI>80	8044 LM		A ↑ G DALI CONTROL
75674366	Systemleuchte 1.5m	230 VAC INPUT	61 W	4000 K CRI>80	8143 LM		A ↑ G DALI CONTROL
75674368	Systemleuchte 1.5m	230 VAC INPUT	61 W	4000 K CRI>80	8143 LM		A ↑ G
75674367	System light 1.5m	230 VAC INPUT	30 W	6500 K CRI>80	4279 LM		A ↑ G DALI CONTROL
75674369	Systemleuchte 1.5m	230 VAC INPUT	61 W	6500 K CRI>80	8044 LM		A ↑ G

Technical data

Storage temperature -40 ... +65 °C

Max. surface temperature 65 °C

Shock rating IK06

Protection type (IP) IP40

Ambient temperature ta 25 °C

Service life L80B10 (h) @ ta = 25°C 50000 h

1

2

3

4

5


6

7


8

9

LED insert 165 R AC, DALI
3000 K 80 CRI 230 V ~ 50Hz / 12 W / IP 20
Art. Nr. : 1000881

CE  smaterion ag, Zeughausstrasse 10, 8887 Mels

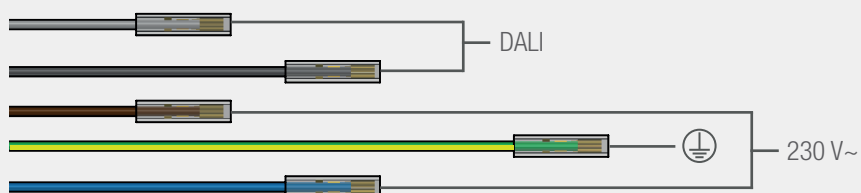
209583-01010100



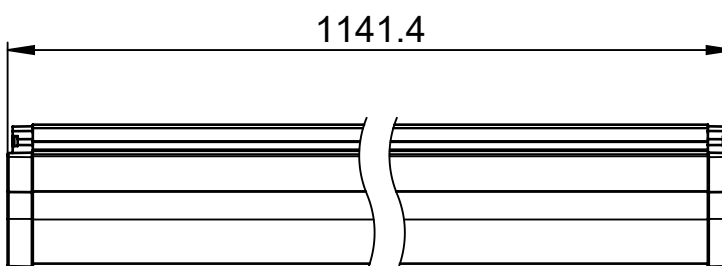
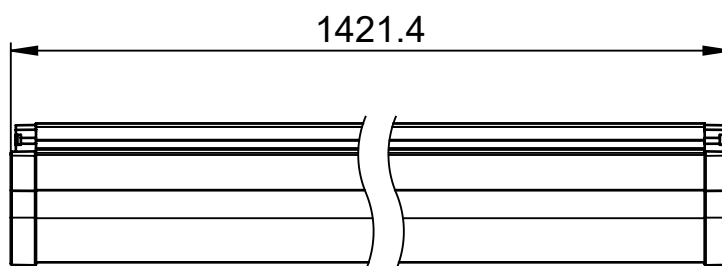
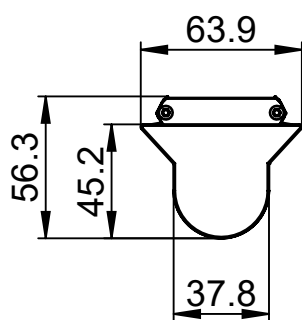
- 1 Product description
- 2 Color temperature, e.g. 3000K
- 3 Color rendering index, e.g. 80 CRI
- 4 Voltage, e.g. 230 V ~
- 5 Power, e.g. 12 W
- 6 IP protection, e.g. IP20

- 7 Item number
- 8 QR code with unique identification ID
- 9 Manufacturer address

Electrical connection

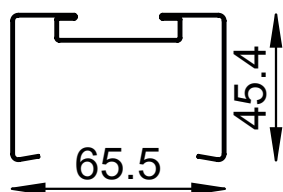


Dimensions

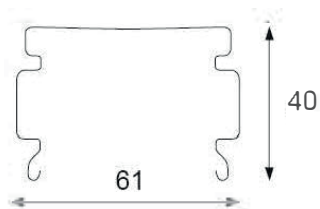


Dimensions

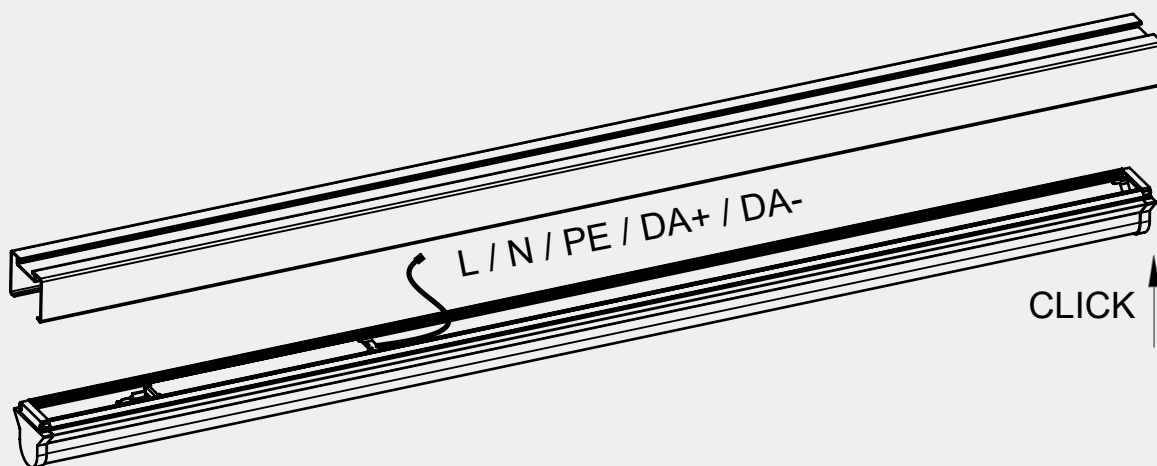
System: Regent
Model: ICE



System: Zumtobel
Model: ZX1



Assembly instructions

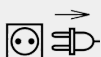


Cleaning and care

If, for any reason, the LED modules need to be cleaned, chemicalsolvents or cleaning agents must not be used under any circumstances. To avoid damaging the module, care must be takennot to exert any pressure on the electronic components.For this reason, we recommend the use of dusting brushes or soft cloths.

Warnings

The equipment may only be installed and put into service by authorised technical personnel (electrical fitters). The luminaire is designed solely for lighting applications and is to be installed according to the installation regulations. Any other form of use or installation is considered to be improper. Failure to comply with the installation instructions can damage the luminaire beyond repair. Return to the manufacturer if any defects are identified. The installation instructions must be retained for future reference. Subject to technical changes. Not to be installed on a wet or conductive substrate. The luminaire is only to be installed, put into service or modified in any way by authorised skilled personnel (a qualified electrician). National installation regulations must be observed. Before any work is performed on the luminaire, it must be disconnected from mains. Hot plug-in is not an option and may cause damage to the luminaire! The manufacturer is not liable for damage resulting from improper/faulty installation or operation, or from unauthorised modifications to the luminaire. The light source contained in this luminaire is only to be replaced by the manufacturer, a service technician authorised by the manufacturer or a similarly qualified person. Caution, risk of electric shock! In the event of questions or queries, please contact the manufacturer.



Disconnect the luminaire from the power supply.



Caution, risk of electric shock!



DISPOSAL

The packaging must be recycled via the DSD (Green Dot) scheme or its equivalent. Dispose of the packaging correctly sorted. Waste electrical and electronic equipment must never be disposed of together with household waste. In accordance with the EU directives, the device must be disposed of in an orderly manner at the end of its service life. This means having the materials contained in the device recycled to avoid polluting the environment. Take the waste equipment to a collection point for electrical and electronic waste or to a recycling depot. For further information, please contact your local waste disposal service or your local authority.



The LED board(s) can only be replaced by smarтерion as the manufacturer. Please do not attempt to replace the components yourself, as this will void the warranty and CE conformity.



The power supply can only be replaced by smarтерion as the manufacturer. Please do not attempt to replace the components yourself, as this will void the warranty and CE conformity.

IP40

Protected against ingress of solid foreign objects with a diameter of more than 1 mm.



Class I luminaires with earth connector. It is absolutely essential to earth the luminaire housing.