

DATA SHEET

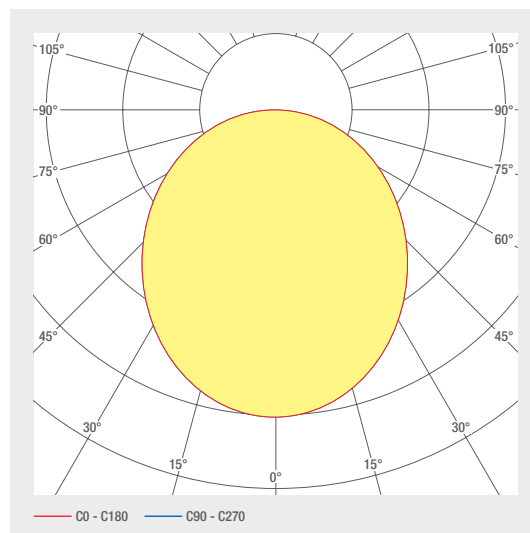
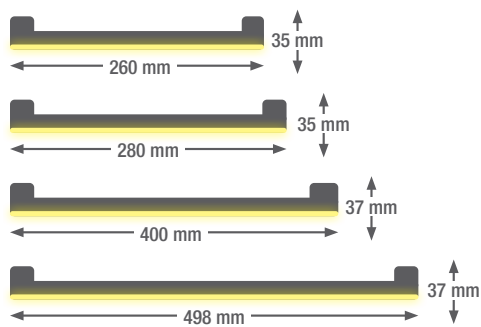
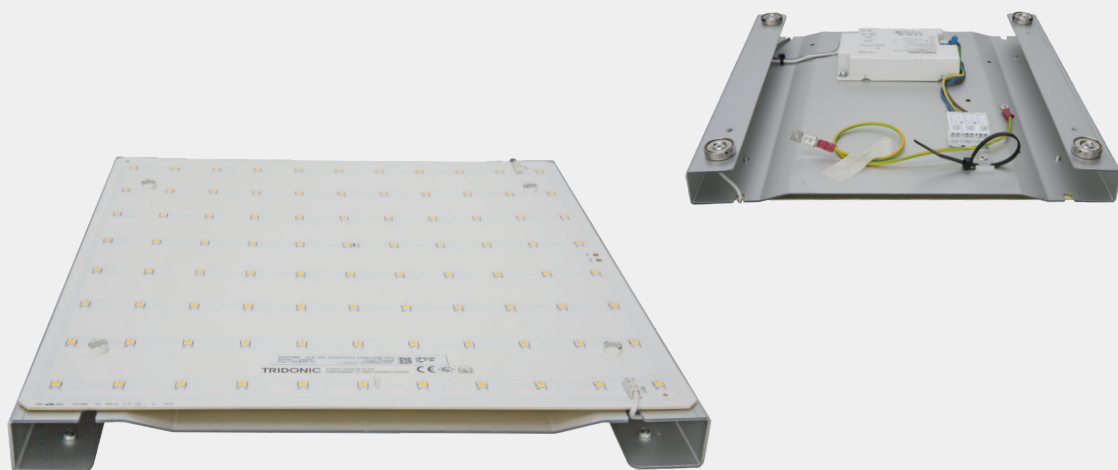
smartSQUARE

Square LED insert for refurbishing luminaires with conventional lamps (E27, CFL). This LED insert is very easy to fit using a magnetic fastener. A highly cost-effective option if the existing luminaire housing (e.g. one made from glass) is still fully intact.

- Luminaire holder, anodised aluminium
- Easy mounting and dismounting
- Control gear: can be switched ON/OFF / dimmable: DALI/ Push
- Service life: 50 000 h LM-80 > 50 000 h
- Magnetic mounting
- Earthing cable for housing already prepared
- Optional: emergency lighting module with battery pack
- Other sizes available on request

LED- INSERTS

3.20 smartSQUARE



ART. NO.	DESIGNATION	CHARACTERISTICS						
1001418	LED insert 260 SQ	230 VAC INPUT	11 W	120°	3000 K CRI>80	1880 LM	C A ↑ G	
1001419	LED insert 260 SQ	230 VAC INPUT	11 W	120°	3000 K CRI>80	1880 LM	C A ↑ G	DALI CONTROL
1001417	LED insert 260 SQ	230 VAC INPUT	11 W	120°	4000 K CRI>80	1950 LM	B A ↑ G	DALI CONTROL
1001416	LED insert 260 SQ	230 VAC INPUT	11 W	120°	4000 K CRI>80	1950 LM	B A ↑ G	
1001737	LED insert 280 SQ	230 VAC INPUT	11 W	120°	3000 K CRI>80	1880 LM	C A ↑ G	
1001738	LED insert 280 SQ	230 VAC INPUT	11 W	120°	3000 K CRI>80	1880 LM	C A ↑ G	DALI CONTROL
1001734	LED insert 280 SQ	230 VAC INPUT	11 W	120°	4000 K CRI>80	1950 LM	B A ↑ G	
1001736	LED insert 280 SQ	230 VAC INPUT	11 W	120°	4000 K CRI>80	1950 LM	B A ↑ G	DALI CONTROL
1001347	LED insert 400 SQ	230 VAC INPUT	38 W	120°	3000 K CRI>80	4600 LM	E A ↑ G	DALI CONTROL
1001346	LED insert 400 SQ	230 VAC INPUT	38 W	120°	3000 K CRI>80	4600 LM	E A ↑ G	
1001349	LED insert 400 SQ	230 VAC INPUT	38 W	120°	4000 K CRI>80	5020 LM	D A ↑ G	DALI CONTROL
1001348	LED insert 400 SQ	230 VAC INPUT	38 W	120°	4000 K CRI>80	5020 LM	D A ↑ G	
1001613	LED insert 500 SQ	230 VAC INPUT	32 W	120°	3000 K CRI>80	5360 LM	C A ↑ G	DALI CONTROL
1001614	LED insert 500 SQ	230 VAC INPUT	32 W	120°	3000 K CRI>80	5360 LM	C A ↑ G	
1001615	LED insert 500 SQ	230 VAC INPUT	32 W	120°	4000 K CRI>80	5600 LM	B A ↑ G	DALI CONTROL
1001616	LED insert 500 SQ	230 VAC INPUT	32 W	120°	4000 K CRI>80	5600 LM	B A ↑ G	

Lighting design

RELUX®

click on the Relux icon to access our lighting design data directly

Technical data

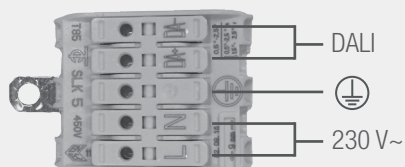
Storage temperature	-40 ... +85 °C
Max. surface temperature	65 °C
Shock rating	IK00
Protection type (IP)	IP20
Ambient temperature t_a	25 °C
Input voltage	230 V ~ 50Hz AC
Service life L80B10 (h) @ $t_a = 25^\circ\text{C}$	50000 h



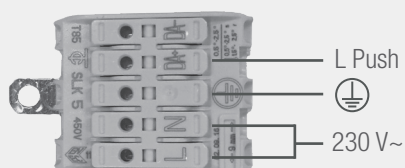
- 1 Product description
- 2 Color temperature, e.g. 3000K
- 3 Color rendering index, e.g. 80 CRI
- 4 Voltage, e.g. 230 V ~
- 5 Power, e.g. 12 W
- 6 IP protection, e.g. IP20
- 7 Item number
- 8 QR code with unique identification ID
- 9 Manufacturer address

Electrical connection

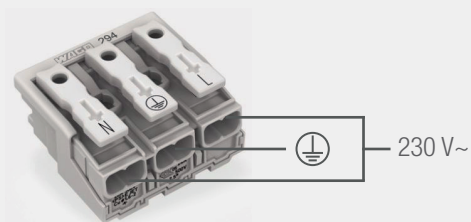
DALI



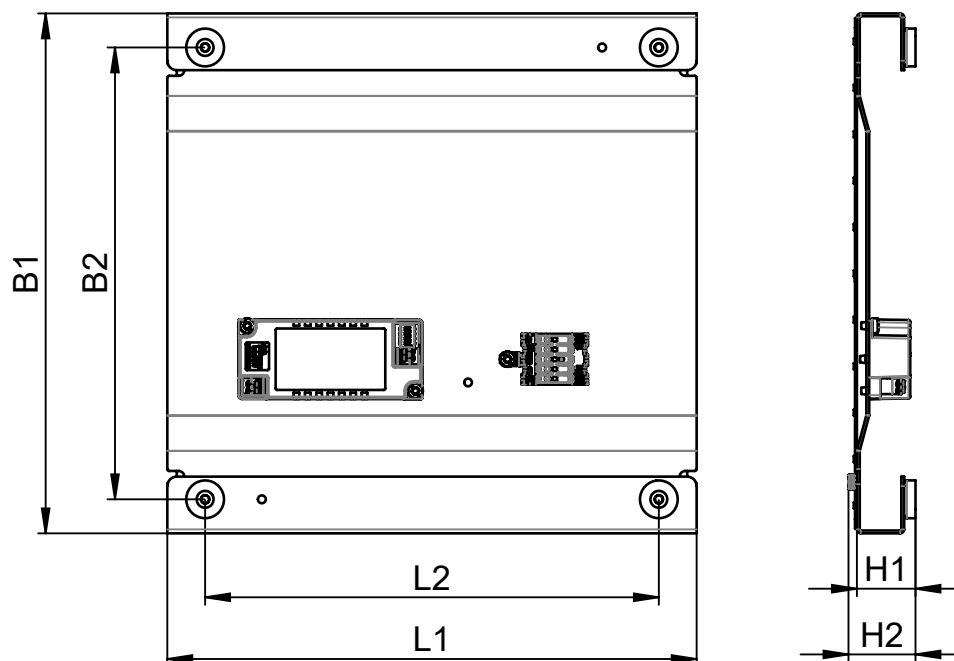
PUSH DIM (optional)



ON/OFF

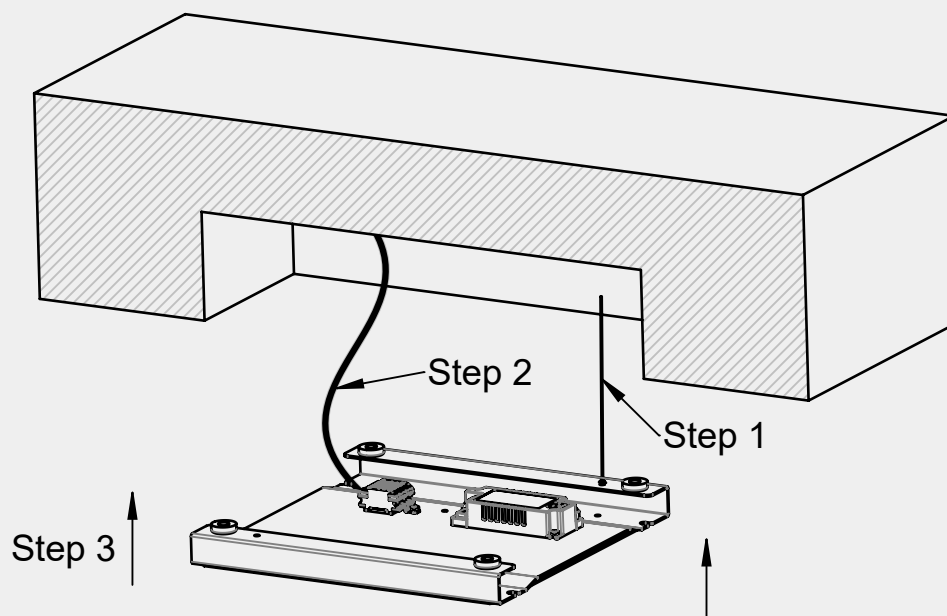


Dimensions



	L1	L2	B1	B2	H1	H2
LED-Einsatz 500 SQ	500	460	500	470	31	36
LED-Einsatz 390 SQ	389	350	386	350	31	36
LED-Einsatz 280 SQ	280	240	275	239	31	36
LED-Einsatz 260 SQ	260	220	260	224	31	36

Assembly instructions

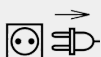


Cleaning and care

If, for any reason, the LED modules need to be cleaned, chemicalsolvents or cleaning agents must not be used under any circumstances. To avoid damaging the module, care must be takennot to exert any pressure on the electronic components.For this reason, we recommend the use of dusting brushes or soft cloths.

Warnings

The equipment may only be installed and put into service by authorised technical personnel (electrical fitters). The luminaire is designed solely for lighting applications and is to be installed according to the installation regulations. Any other form of use or installation is considered to be improper. Failure to comply with the installation instructions can damage the luminaire beyond repair. Return to the manufacturer if any defects are identified. The installation instructions must be retained for future reference. Subject to technical changes. Not to be installed on a wet or conductive substrate. The luminaire is only to be installed, put into service or modified in any way by authorised skilled personnel (a qualified electrician). National installation regulations must be observed. Before any work is performed on the luminaire, it must be disconnected from mains. Hot plug-in is not an option and may cause damage to the luminaire! The manufacturer is not liable for damage resulting from improper/faulty installation or operation, or from unauthorised modifications to the luminaire. The light source contained in this luminaire is only to be replaced by the manufacturer, a service technician authorised by the manufacturer or a similarly qualified person. Caution, risk of electric shock! In the event of questions or queries, please contact the manufacturer.



Disconnect the luminaire from the power supply.



Caution, risk of electric shock!



DISPOSAL

The packaging must be recycled via the DSD (Green Dot) scheme or its equivalent. Dispose of the packaging correctly sorted. Waste electrical and electronic equipment must never be disposed of together with household waste. In accordance with the EU directives, the device must be disposed of in an orderly manner at the end of its service life. This means having the materials contained in the device recycled to avoid polluting the environment. Take the waste equipment to a collection point for electrical and electronic waste or to a recycling depot. For further information, please contact your local waste disposal service or your local authority.



The LED board(s) can only be replaced by smarтерion as the manufacturer. Please do not attempt to replace the components yourself, as this will void the warranty and CE conformity.



The power supply can only be replaced by smarтерion as the manufacturer. Please do not attempt to replace the components yourself, as this will void the warranty and CE conformity.

If the luminaire insert is installed in a metal housing, it is essential to ensure that the luminaire housing must also be earthed and not just the luminaire insert.

IP20

Protected against ingress of solid foreign objects with a diameter of more than 12.5 mm.



Class I luminaires with earth connector. It is absolutely essential to earth the luminaire housing.