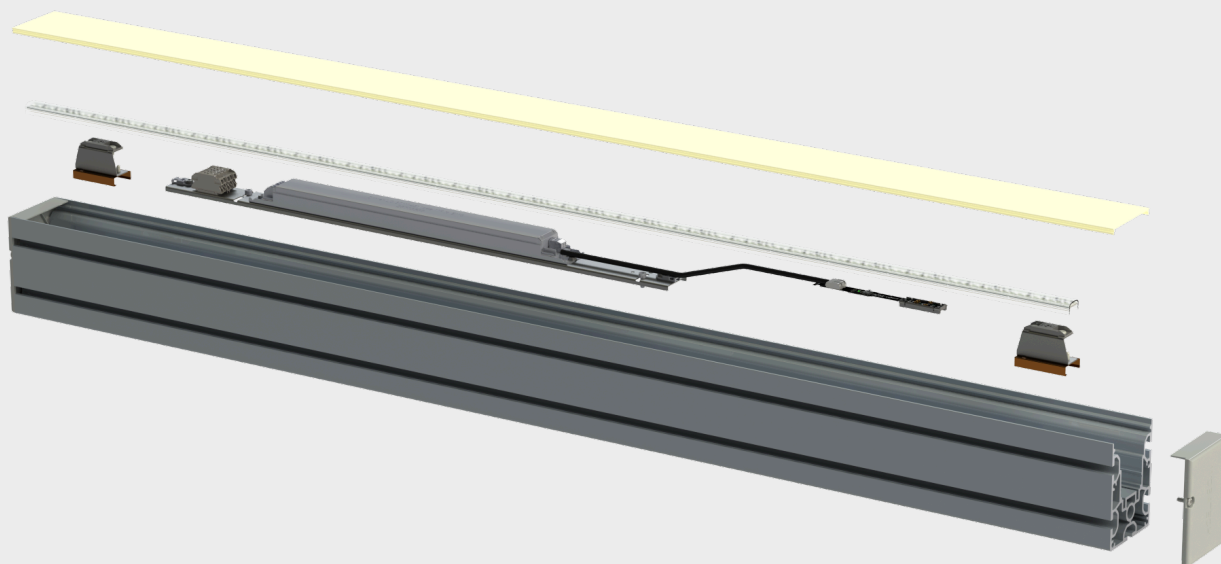




Simple to handle, flexible to use.



## Data sheet

# 20.400\_luxKIT\_Wobatech

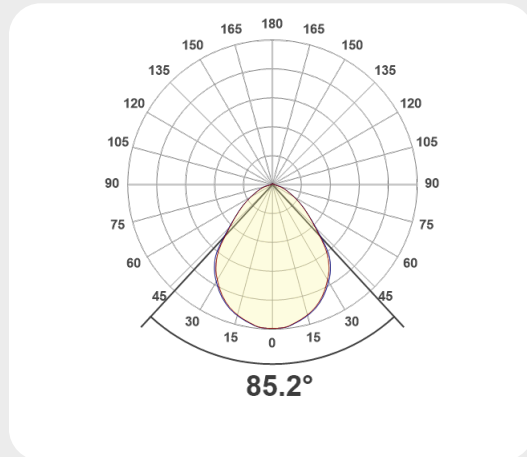
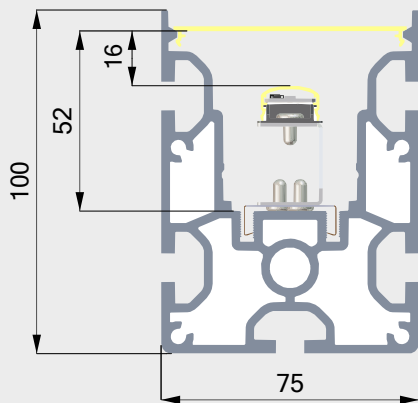
The luxKIT refurbishment system enables simple, fast and professional conversion of an existing continuous-row lighting system. Thanks to the patented click system, the light modules can be installed in next to no time. The 48V technology ensures that fewer power supply units need to be installed. The LED modules are cut with millimeter precision to ensure a shadow-free light pattern.

- Einfache Sanierungslösung
- LED modules incl. electrical connector linear
- 48 VDC control gear
- Schnelle Installation dank Klick-System
- Ready-to-repair
- Schattenfreie Lichtinstallation

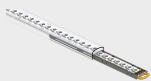
## LED systems

# 20.400\_luxKIT\_Wobatech

### 20.400 Wobatechtransparent



### LED modules incl. electrical connector linear



Article number  
1100037



Article number  
1007652 / 1007653 / 1008062 /  
1007654



Article number  
1100045

Article number	GTIN	Designation	Properties
1100037	7640382276230	luxKIT LED Modul RGB	48V DC
1007652	7640382274977	luxKIT LED Modul SW	48V DC / 2700 K / CRI80
1007653	7640382274984	luxKIT LED Modul SW	48V DC / 3000 K / CRI80
1008062	7640382275912	luxKIT LED module	48V DC / 3500 K / CRI80
1007654	7640382274991	luxKIT LED Modul SW	48V DC / 4000 K / CRI80
1100045	7640382277817	luxKIT LED Modul TW	48V DC / 2700...6500 / CRI80

## Accessories



Article number  
1100038



Article number  
1100046



Article number  
1007693



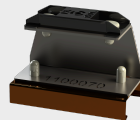
Article number  
1100094



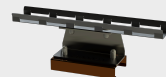
Article number  
1100048



Article number  
1007669



Article number  
1100070



Article number  
1100105

Article number	GTIN	Designation	Properties
1100038	7640382276247	luxKIT 48V connector RGB	Connection terminal 0.75 mm <sup>2</sup>
1100046	7640382277824	luxKIT 48V connector TW	Connection terminal 0.75 mm <sup>2</sup>
1007693	7640382275073	luxKIT Flex connector SW	max. 5A / 50V
1100094	7640382277930	luxKIT Flex-connector RGB/TW	max. 5A / 50V
1100048	7640382277831	luxKIT cable connector	max. 5A / 50V
1007669	7640382275059	luxKIT 48V connector SW	Connection terminal 1.5 mm <sup>2</sup>
1100070		Distanzhalter	
1100105		Verbinder	

## 48 VDC control gear



Article number  
1100067



Article number  
1100068

Article number	GTIN	Designation	Properties
1100068		Netzteileinschub 100W	L 565 x W 30 x H 26 mm
1100067		Netzteileinschub 60W	L 565 x W 30 x H 26 mm

**Specific technical data LED module**

Article number 1007652

Performance	Luminous flux	Color temperature	CRI	SDCM	Maximum length )	Energy class
8.4 W	1254 lm	2700 K	80	3	21 m	D
18 W	2619 lm	2700 K	80	3	13 m	D
27.6 W	3977 lm	2700 K	80	3	9 m	D

Article number 1007653

Performance	Luminous flux	Color temperature	CRI	SDCM	Maximum length )	Energy class
8.4 W	1265 lm	3000 K	80	3	21 m	D
18 W	2643 lm	3000 K	80	3	13 m	D
27.6 W	4012 lm	3000 K	80	3	9 m	D

Article number 1007654

Performance	Luminous flux	Color temperature	CRI	SDCM	Maximum length )	Energy class
8.4 W	1367 lm	4000 K	80	3	21 m	D
18 W	2855 lm	4000 K	80	3	13 m	D
27.6 W	4335 lm	4000 K	80	3	9 m	D

Article number 1008062

Performance	Luminous flux	Color temperature	CRI	SDCM	Maximum length )	Energy class
8.4 W	1337 lm	3500 K	80	3	21 m	D
18 W	2793 lm	3500 K	80	3	13 m	D
27.6 W	4241 lm	3500 K	80	3	9 m	D

Article number 1100037

Performance	Luminous flux	Color temperature	CRI	SDCM	Maximum length )	Energy class
5.4 W	297 lm	red			10 m	
6.2 W	614 lm	green			10 m	
5.8 W	167 lm	blue			10 m	
18 W	981 lm	RGB			10 m	

Article number 1100045

Performance	Luminous flux	Color temperature	CRI	SDCM	Maximum length )	Energy class
18 W	2244 lm	2700 K	80	3	10 m	D
18 W	2437 lm	6500 K	80	5	10 m	D

\*) The specification of the maximum length refers to a connection cable with a length of 1 m and a cross-section of 1.5mm<sup>2</sup>. The maximum length decreases with increasing length and smaller cross-section. Here you will find a table with different cable lengths: [download](#)

### Technical data

<b>Article number</b>	<b>20.400</b>
GTIN	
Designation	Wobatech
Storage temperature	-25 ... +50 °C
Max. surface temperature	65 °C
Ambient temperature $t_a$	25 °C
Service life L80B10 (h) @ $t_a = 25^\circ\text{C}$	80000 h

### Lighting design

**RELUX®**

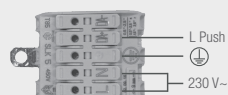
click on the Relux icon to access our lighting design data directly

### Electrical connection

DALI



PUSH DIM

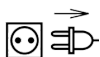


### Cleaning and care

Clean the luminaire with a damp, lint-free cloth. Do not scrub! In case of heavy soiling, a weak soapy solution can be used (microfiber cloth with detergent). Do not use abrasive cleaners. Do not wipe the light dry, as the resulting static charge can destroy the electronics.

### Warnings

The equipment may only be installed and put into service by authorised technical personnel (electrical fitters). The luminaire is designed solely for lighting applications and is to be installed according to the installation regulations. Any other form of use or installation is considered to be improper. Failure to comply with the installation instructions can damage the luminaire beyond repair. Return to the manufacturer if any defects are identified. The installation instructions must be retained for future reference. Subject to technical changes. Not to be installed on a wet or conductive substrate. The luminaire is only to be installed, put into service or modified in any way by authorised skilled personnel (a qualified electrician). National installation regulations must be observed. Before any work is performed on the luminaire, it must be disconnected from mains. Hot plug-in is not an option and may cause damage to the luminaire! The manufacturer is not liable for damage resulting from improper/faulty installation or operation, or from unauthorised modifications to the luminaire. The light source contained in this luminaire is only to be replaced by the manufacturer, a service technician authorised by the manufacturer or a similarly qualified person. Caution, risk of electric shock! In the event of questions or queries, please contact the manufacturer.



Disconnect the luminaire from the power supply.



Caution, risk of electric shock!



### DISPOSAL

The packaging must be recycled via the DSD (Green Dot) scheme or its equivalent. Dispose of the packaging correctly sorted. Waste electrical and electronic equipment must never be disposed of together with household waste. In accordance with the EU directives, the device must be disposed of in an orderly manner at the end of its service life. This means having the materials contained in the device recycled to avoid polluting the environment. Take the waste equipment to a collection point for electrical and electronic waste or to a recycling depot. For further information, please contact your local waste disposal service or your local authority.



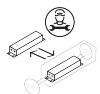
To avoid hazards, only LED converters approved by us may be used, otherwise all warranty claims will be invalidated. Exceptions can be approved by the manufacturer.

Permitted LED converters:

- smarterion Triac Power supply units
- Meanwell, HLG
- Tridonic LC/LCA



Light source replaceable by end user.



Control gear can be replaced by a specialist: The transformer must be replaced by a qualified electrician.

# LUXKIT

Simple to handle, flexible to use.