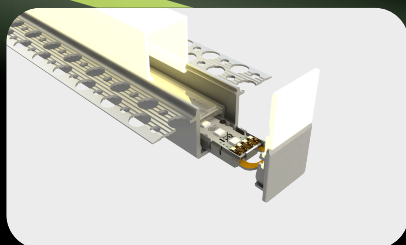
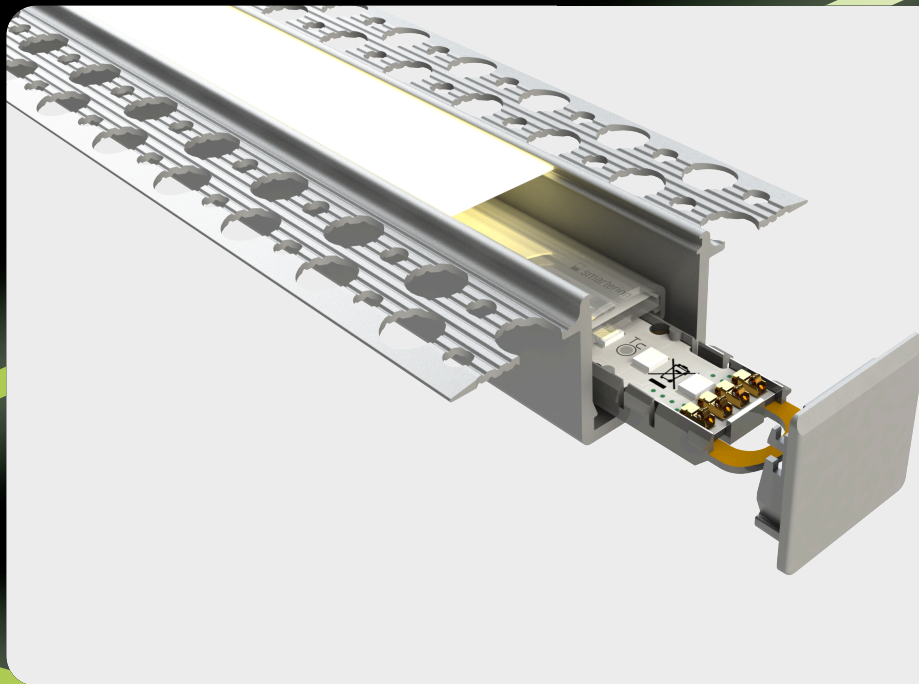




Simple to handle, flexible to use.



## Data sheet

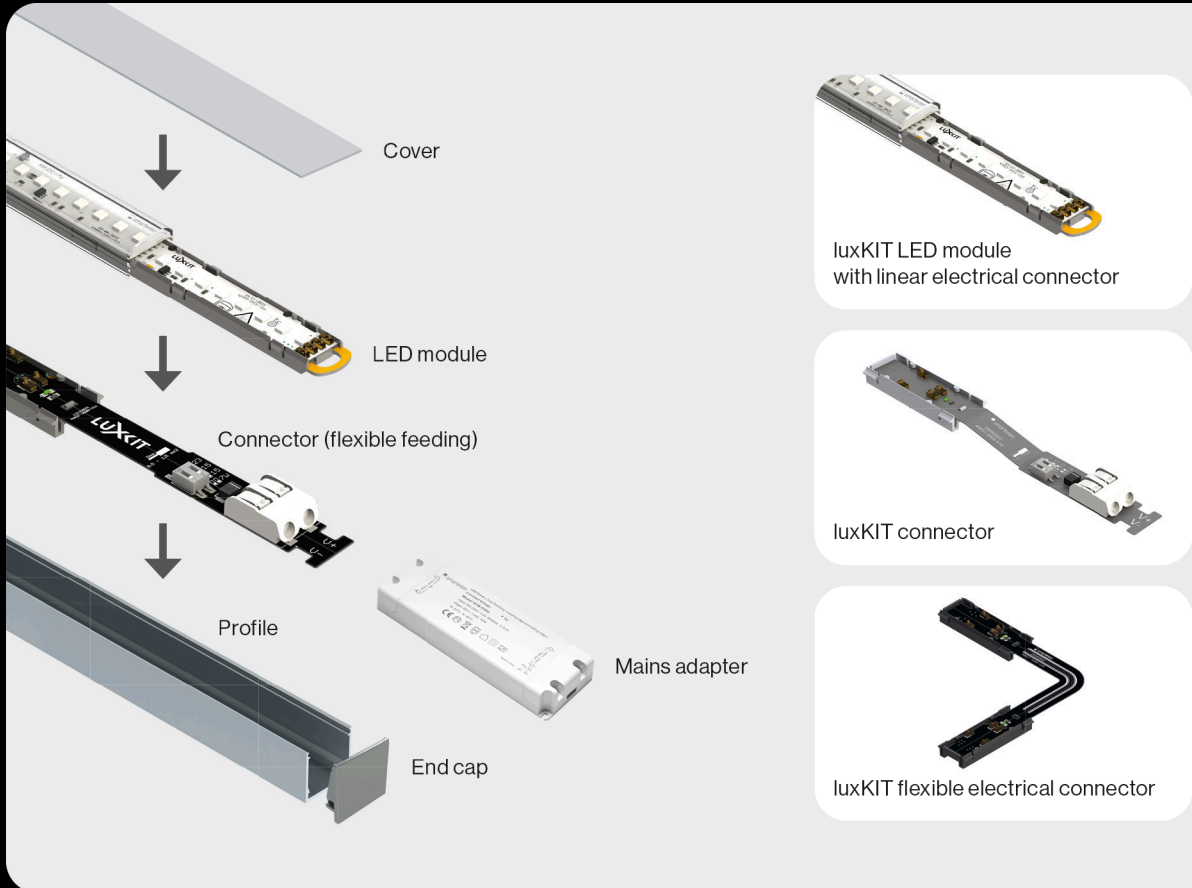
# luxKIT P20

High-quality drywall profile with side wings for use in drywall construction. The profile is easy to install and can be inserted with the filler. L 2400 x W 60 x H 22 mm made of aluminum. luxKIT, the new linear LED modular system is easy to install, can be ordered digitally at any time, is economical and repairable.

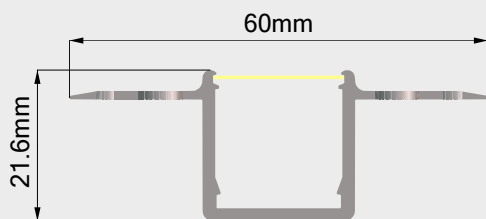
- 100% shadow-free for continuous light
- Simple to understand and easy to install
- Flexible modular LED system for linear light made to measure
- Installation at the speed of light with the click system
- New app for easy planning and ordering
- No soldering, tool-free installation, power supply possible anywhere
- Patented world first
- Ready2Repair: components can be replaced at any time, which ensures sustainability

LED systems

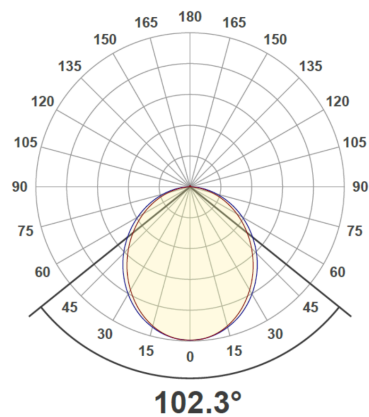
# luxKIT P20



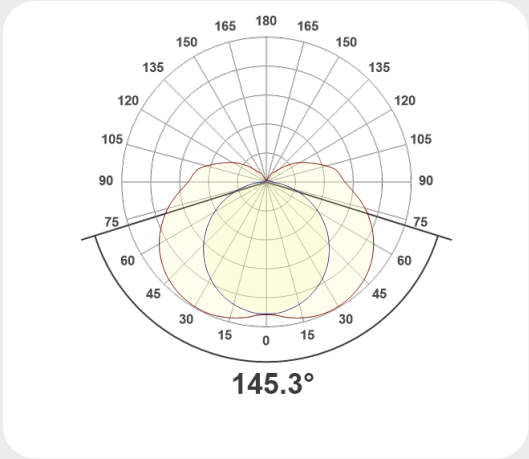
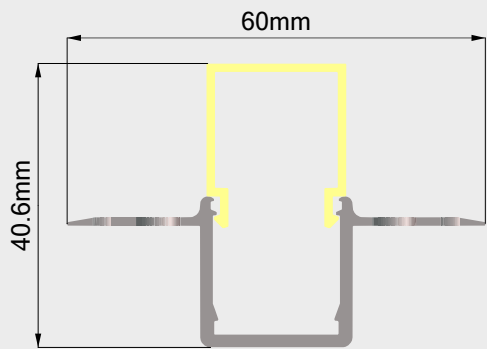
## 20.020 luxKIT P20 - 20-O



Profile length 2.4m

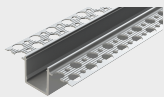


20.020 luxKIT P20 - U20-O



Profile length 2.4m

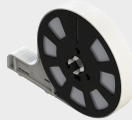
Profile



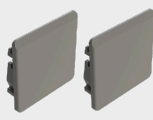
Article number  
1007759

Article number	GTIN	Designation	Properties
1007759	7640382275455	luxKIT profile P20 - 2.4m	blank

Covers and end caps

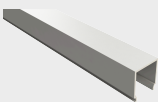


Article number  
1007672



Article number  
1007948

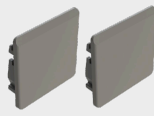
Article number	GTIN	Designation	Properties
luxKIT Diffuser 20-O			IK03 IP44 *
1007672	7640382275066	luxKIT Diffuser 20-O	opal
1007948	7640382275646	luxKIT Endkappen P20	grey



Article number  
1007987



Article number  
1007989



Article number  
1007948

Article number	GTIN	Designation	Properties
luxKIT Diffuser U20-O			IK03 IP20
1007987	7640382276223	luxKIT Diffuser U20-O	opal
1007989	7640382275929	luxKIT Endkappen U20-O	transparent
1007948	7640382275646	luxKIT Endkappen P20	grey

\* with multi-part profile protection class IP20



## LED modules incl. electrical connector linear



Article number  
1007652 / 1007653 / 1007654 /  
1008062

Article number	GTIN	Designation	Properties
1007652	7640382274977	luxKIT LED Modul	48V DC / 2700 K / CRI80
1007653	7640382274984	luxKIT LED Modul	48V DC / 3000 K / CRI80
1007654	7640382274991	luxKIT LED Modul	48V DC / 4000 K / CRI80
1008062	7640382275912	luxKIT LED module	48V DC / 3500 K / CRI80

## Accessories



Article number  
1007669



Article number  
1007693

Article number	GTIN	Designation	Properties
1007669	7640382275059	luxKIT 48V Konnector	Connection terminal 1.5 mm <sup>2</sup>
1007693	7640382275073	luxKIT Flex-Verbinder	max. 5A / 50V



## 48 VDC control gear



Article number  
1007406 / 1007408 / 1007704



Article number  
28003841 / 28003842 /  
28003843 / 87501112 / 87501113 /  
87501114 / 87501115

Article number		GTIN	Designation	Properties
28003841		9006210762043	LED-power supply LC 60W 48V one4all	L 195 x W 43 x H 30 mm
28003842		9006210762111	LED-power supply LC 100W 48V one4all	L 225 x W 43 x H 30 mm
28003843		9006210762180	LED-power supply LC 200W 48V one4all	L 325 x W 43 x H 30 mm
87501112		9006210833934	LED driver LC 35W 48V	L 142 x W 43 x H 30 mm
87501113		9006210833941	LED driver LC 60W 48V	L 225 x W 43 x H 30 mm
87501114		9006210833958	LED driver LC 100W 48V	L 295 x W 43 x H 30 mm
87501115		9006210833965	LED driver LC 200W 48V	L 325 x W 43 x H 30 mm
1007406		7640382275080	Power supply 48V 60W triac	L 178 x W 61 x H 24 mm
1007408		7640382275103	Power supply 48V 90W triac	L 180 x W 60 x H 35 mm
1007704		7640382275158	Power supply 48V 200W phase dimmable	L 343 x W 68 x H 41 mm

### Specific technical data LED module

Article number 1007652

Performance	Luminous flux	Farbtemperatur	CRI	SDCM	Maximum length )	Energy class
8.4 W	1253 lm	2700 K	80	3	20.5 m	D
18 W	2686 lm	2700 K	80	3	12.5 m	D
27.6 W	4118 lm	2700 K	80	3	9 m	D

Article number 1007653

Performance	Luminous flux	Farbtemperatur	CRI	SDCM	Maximum length )	Energy class
8.4 W	1265 lm	3000 K	80	3	20.5 m	D
18 W	2710 lm	3000 K	80	3	12.5 m	D
27.6 W	4156 lm	3000 K	80	3	9 m	D

Article number 1007654

Performance	Luminous flux	Farbtemperatur	CRI	SDCM	Maximum length )	Energy class
8.4 W	1367 lm	4000 K	80	3	20.5 m	D
18 W	2929 lm	4000 K	80	3	12.5 m	D
27.6 W	4490 lm	4000 K	80	3	9 m	D

Article number 1008062

Performance	Luminous flux	Farbtemperatur	CRI	SDCM	Maximum length )	Energy class
8.4 W	1337 lm	3500 K	80	3	20.5 m	D
18 W	2864 lm	3500 K	80	3	12.5 m	D
27.6 W	4392 lm	3500 K	80	3	9 m	D

\*) The specification of the maximum length refers to a connection cable with a length of 1 m and a cross-section of 1.5mm<sup>2</sup>. The maximum length decreases with increasing length and smaller cross-section. Here you will find a table with different cable lengths: [download](#)

### Technical data

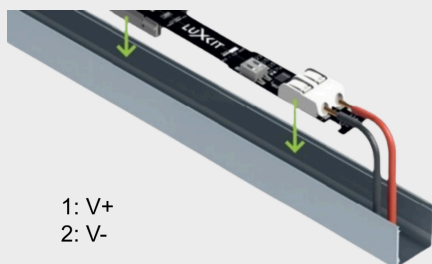
Storage temperature	-25 ... +50 °C
Max. surface temperature	65 °C
Ambient temperature ta	25 °C
Service life L80B10 (h) @ ta = 25 °C	80000 h

**Lighting design**

**RELUX®**

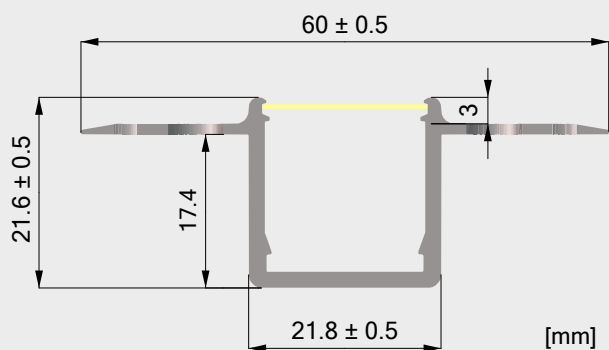
click on the Relux icon to access our lighting design data directly

**Electrical connection**



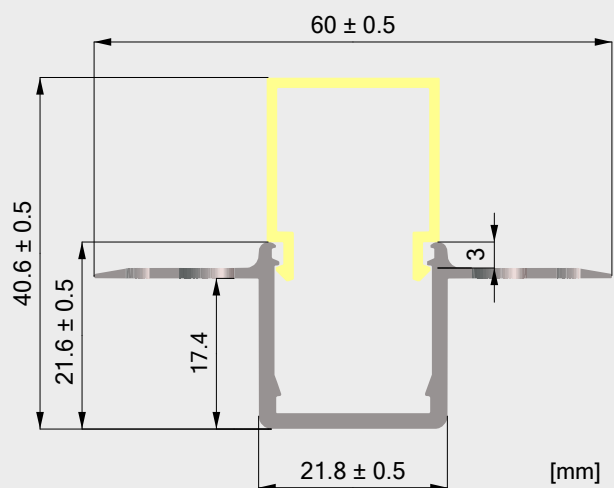
Ø0,5-1,5mm<sup>2</sup>  
48V DC

**20.020 luxKIT P20 - 20-O**  
**Dimensions**



### 20.020 luxKIT P20 - U20-O

#### Dimensions



#### Assembly instructions

20.020 luxKIT P20 - 20-O



20.020 luxKIT P20 - U20-O

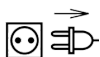


### Cleaning and care

Wipe the luminaire clean using a damp, lint-free cloth. Do not scrub! If heavily soiled, wipe clean with a mild solution of warm soapy water (microfibre cloth and washing-up liquid). Do not use a scouring agent. Do not rub the luminaire dry, as the resulting static may damage the electronic components beyond repair.

### Warnings

The equipment may only be installed and put into service by authorised technical personnel (electrical fitters). The luminaire is designed solely for lighting applications and is to be installed according to the installation regulations. Any other form of use or installation is considered to be improper. Failure to comply with the installation instructions can damage the luminaire beyond repair. Return to the manufacturer if any defects are identified. The installation instructions must be retained for future reference. Subject to technical changes. Not to be installed on a wet or conductive substrate. The luminaire is only to be installed, put into service or modified in any way by authorised skilled personnel (a qualified electrician). National installation regulations must be observed. Before any work is performed on the luminaire, it must be disconnected from mains. Hot plug-in is not an option and may cause damage to the luminaire! The manufacturer is not liable for damage resulting from improper/faulty installation or operation, or from unauthorised modifications to the luminaire. The light source contained in this luminaire is only to be replaced by the manufacturer, a service technician authorised by the manufacturer or a similarly qualified person. Caution, risk of electric shock! In the event of questions or queries, please contact the manufacturer.



Disconnect the luminaire from the power supply.



Caution, risk of electric shock!



### DISPOSAL

The packaging must be recycled via the DSD (Green Dot) scheme or its equivalent. Dispose of the packaging correctly sorted. Waste electrical and electronic equipment must never be disposed of together with household waste. In accordance with the EU directives, the device must be disposed of in an orderly manner at the end of its service life. This means having the materials contained in the device recycled to avoid polluting the environment. Take the waste equipment to a collection point for electrical and electronic waste or to a recycling depot. For further information, please contact your local waste disposal service or your local authority.



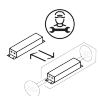
To avoid hazards, only LED converters approved by us may be used, otherwise all warranty claims will be invalidated. Exceptions can be approved by the manufacturer.

Permitted LED converters:

- smarterion Triac Power supply units
- Meanwell, HLG
- Tridonic LC/LCA



Light source replaceable by end user.



Control gear can be replaced by a specialist: The transformer must be replaced by a qualified electrician.

# LUXKIT

Simple to handle, flexible to use.