

## DATA SHEET

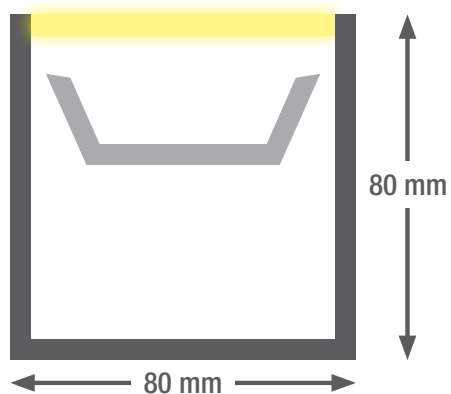
# smartLED 8080

This high-quality LED strip light system offers a high degree of expandability and is made from anodised aluminium. The end caps are made from die-cast aluminium and have no visible screws. The control gear is integrated directly into the line and even long lengths can be set up quickly thanks to the easy-to-install through-wiring. The smartLED 8080 is also available in a surface-mounted or pendant version for effective use as a single luminaire. An indirect component can be optionally fitted. This LED line really knows how to impress with its ease of installation, wide range of applications and robust design.

- Anodised aluminium channel
- With integrated control gear
- Opal PMMA or microprismatic cover
- Die-cast aluminium end caps, painted in profile colour, no visible screws
- Service life: 50 000 h LM-80 > 50 000 h
- Light colors: 2700 K / 3000 K / 4000 K / 6500 K / TW / RGB(W)
- Dimming option: DALI / 1–10V / Push Dim
- Optional: emergency lighting module with battery pack
- Optional: RAL or NCS powder coating
- Integrated through-wiring

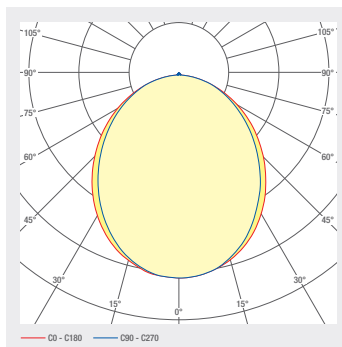
## LED SYSTEMS

# 1.360 smartLED 8080

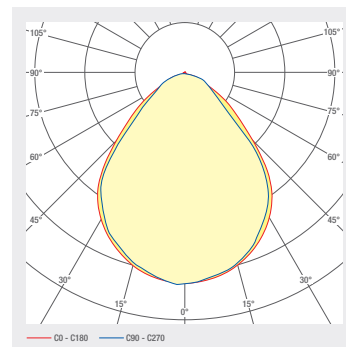


Profile length up to 3.6 m one-piece, greater than 3.6 m multi-piece

opal



mikroprisma



ART. NO.	DESIGNATION	CHARACTERISTICS							
1004278	LED insert indirect ratio	230 VAC INPUT	13.5 W/M	2700 K CRI>80	133 LED/M	RELUX®		A ↑ G	SDCM3
1004277	LED insert indirect ratio	230 VAC INPUT	25 W/M	2700 K CRI>80	133 LED/M	RELUX®		A ↑ G	SDCM3
1004248	LED insert direct component	230 VAC INPUT	25 W/M	2700 K CRI>80	133 LED/M	RELUX®		A ↑ G	SDCM3
1004252	LED insert direct component	230 VAC INPUT	13.5 W/M	2700 K CRI>80	133 LED/M	RELUX®		A ↑ G	SDCM3
1004276	LED insert indirect ratio	230 VAC INPUT	13.5 W/M	3000 K CRI>80	133 LED/M	RELUX®		A ↑ G	SDCM3
1004247	LED insert direct component	230 VAC INPUT	25 W/M	3000 K CRI>80	133 LED/M	RELUX®		A ↑ G	SDCM3
1004275	LED insert indirect ratio	230 VAC INPUT	25 W/M	3000 K CRI>80	133 LED/M	RELUX®		A ↑ G	SDCM3
1004251	LED insert direct component	230 VAC INPUT	13.5 W/M	3000 K CRI>80	133 LED/M	RELUX®		A ↑ G	SDCM3
1004250	LED insert direct component	230 VAC INPUT	13.5 W/M	4000 K CRI>80	133 LED/M	RELUX®		A ↑ G	SDCM3
1004279	LED insert indirect ratio	230 VAC INPUT	13.5 W/M	4000 K CRI>80	133 LED/M	RELUX®		A ↑ G	SDCM3
1004274	LED insert indirect ratio	230 VAC INPUT	25 W/M	4000 K CRI>80	133 LED/M	RELUX®		A ↑ G	SDCM3
1004246	LED insert direct component	230 VAC INPUT	25 W/M	4000 K CRI>80	133 LED/M	RELUX®		A ↑ G	SDCM3
1007740	External profile incl. opal cover								
1008033	External profile incl. microprismatic cover								
1007924	Power supply plug-in unit direct component	230 VAC INPUT	100 W						
1007928	Mains part insertion Indirect share	230 VAC INPUT	100 W						
1007929	Additional indirect power supply unit	230 VAC INPUT	100 W	DALI CONTROL					
1007926	Mains part insertion Direct share	230 VAC INPUT	100 W	DALI CONTROL					
1007925	Power supply plug-in unit direct component	230 VAC INPUT	60 W	DALI CONTROL					
1007930	Additional indirect power supply unit	230 VAC INPUT	60 W	DALI CONTROL					
1007927	Additional indirect power supply unit	230 VAC INPUT	60 W						
1007923	Power supply plug-in unit direct component	230 VAC INPUT	60 W						
1005665	Cable for through-wiring on/off								
1005672	Cable for through-wiring DALI								

## Lighting design

**RELUX®**

click on the Relux icon to access our lighting design data directly

## Accessories

Art. No.  
1004156Art. No.  
1004224Art. No.  
1005380

## ART. NO.

## DESIGNATION

1004156	Mounting bracket
1004224	Profile connector 8080
1005380	Pendant set with mounting bracket 3m

## Technical data

Storage temperature -25 ... +50 °C

Max. surface temperature 75 °C

Shock rating IK03

Protection type (IP) IP20

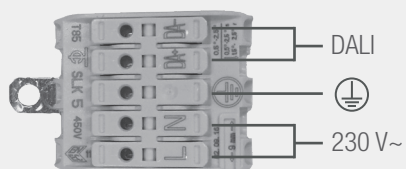
Ambient temperature  $t_a$  25 °CService life L80B10 (h) @  $t_a$  =  
25°C 50000 h

**1** kitchen ground floor  
**5** smartLED 1919 45° / 11W/m / 2700K / IP20  
**4** Art. Nr. : 1000881  
**6** 24V   
**3** Länge: 2800 mm  
**2** Länge tot: 11000 mm 1/2  
**7**   
**11**   
**10** smaterion ag, Zeughausstrasse 10, 8887 Mels

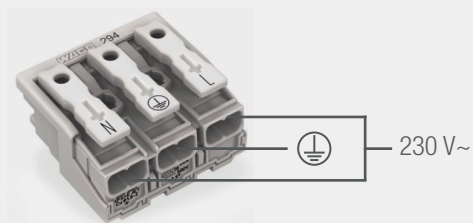
**1** Position, e.g. kitchen**2** Profile part for multi-part lengths, e.g.  $\frac{1}{3}$ ,  $\frac{2}{3}$ ,  $\frac{3}{3}$ **3** Length profile**4** Item number**5** Profile type, e.g. smartLED 1216**6** Voltage, e.g. 24 V**7** Power, e.g. 23W/m**8** Color temperature, e.g. 3000K**9** IP protection, e.g. IP20**10** Manufacturer address**11** QR code with unique identification ID

## Electrical connection

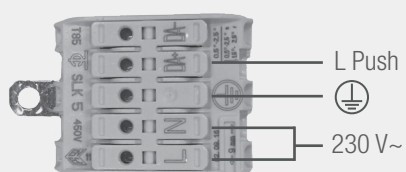
DALI



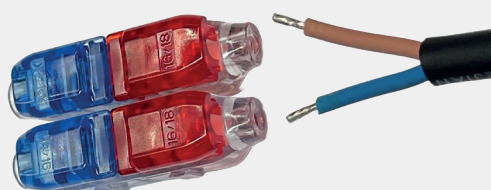
ON/OFF



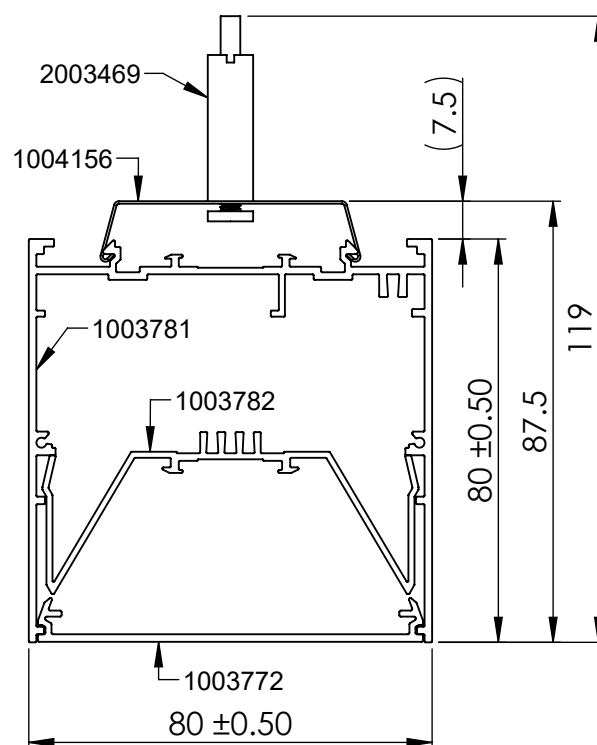
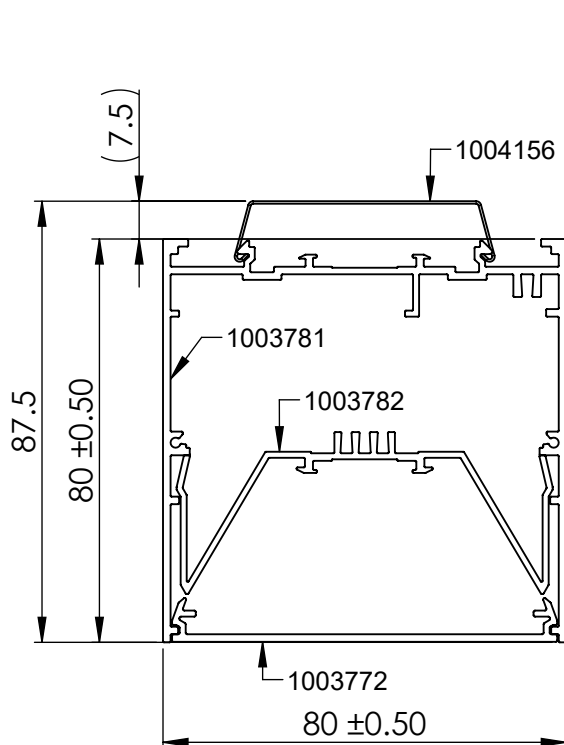
PUSH DIM



IP67 Option



## Dimensions



## Assembly instructions



### Cleaning and care

Wipe the luminaire clean using a damp, lint-free cloth. Do not scrub! If heavily soiled, wipe clean with a mild solution of warm soapy water (microfibre cloth and washing-up liquid). Do not use a scouring agent. Do not rub the luminaire dry, as the resulting static may damage the electronic components beyond repair.

### Warnings

The equipment may only be installed and put into service by authorised technical personnel (electrical fitters). The luminaire is designed solely for lighting applications and is to be installed according to the installation regulations. Any other form of use or installation is considered to be improper. Failure to comply with the installation instructions can damage the luminaire beyond repair. Return to the manufacturer if any defects are identified. The installation instructions must be retained for future reference. Subject to technical changes. Not to be installed on a wet or conductive substrate. The luminaire is only to be installed, put into service or modified in any way by authorised skilled personnel (a qualified electrician). National installation regulations must be observed. Before any work is performed on the luminaire, it must be disconnected from mains. Hot plug-in is not an option and may cause damage to the luminaire! The manufacturer is not liable for damage resulting from improper/faulty installation or operation, or from unauthorised modifications to the luminaire. The light source contained in this luminaire is only to be replaced by the manufacturer, a service technician authorised by the manufacturer or a similarly qualified person. Caution, risk of electric shock! In the event of questions or queries, please contact the manufacturer.



Disconnect the luminaire from the power supply.



Caution, risk of electric shock!



#### DISPOSAL

The packaging must be recycled via the DSD (Green Dot) scheme or its equivalent. Dispose of the packaging correctly sorted. Waste electrical and electronic equipment must never be disposed of together with household waste. In accordance with the EU directives, the device must be disposed of in an orderly manner at the end of its service life. This means having the materials contained in the device recycled to avoid polluting the environment. Take the waste equipment to a collection point for electrical and electronic waste or to a recycling depot. For further information, please contact your local waste disposal service or your local authority.



The LED board(s) can only be replaced by smarterion as the manufacturer. Please do not attempt to replace the components yourself, as this will void the warranty and CE conformity.



The power supply can only be replaced by smarterion as the manufacturer. Please do not attempt to replace the components yourself, as this will void the warranty and CE conformity.

## IP20

Protected against ingress of solid foreign objects with a diameter of more than 12.5 mm.



Class I luminaires with earth connector. It is absolutely essential to earth the luminaire housing.