

DATA SHEET

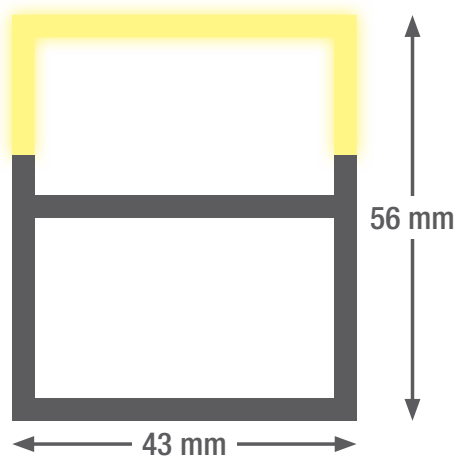
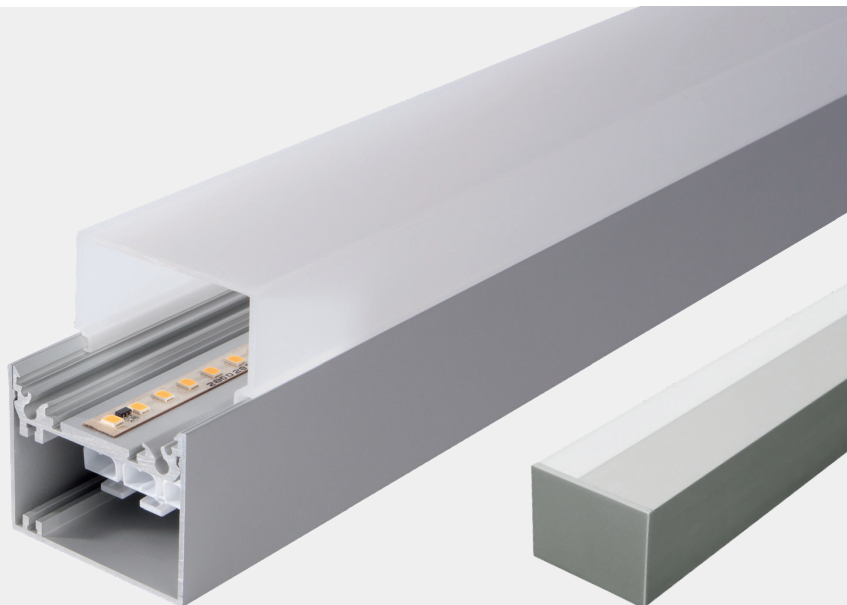
smartLED 5643

This refined, high-quality LED lighting system is extremely compact and is made from anodised aluminium. The end caps are made from die-cast aluminium and have no visible screws. The cuboid diffuser also ensures that indirect light is emitted into the room. The control gear is integrated into the line and you also have the option of incorporating the wiring for other profiles into the line. The smartLED profile 5643 is also available in a surface-mounted or pendant version for effective use as a single luminaire. This LED line really knows how to impress with its ease of installation.

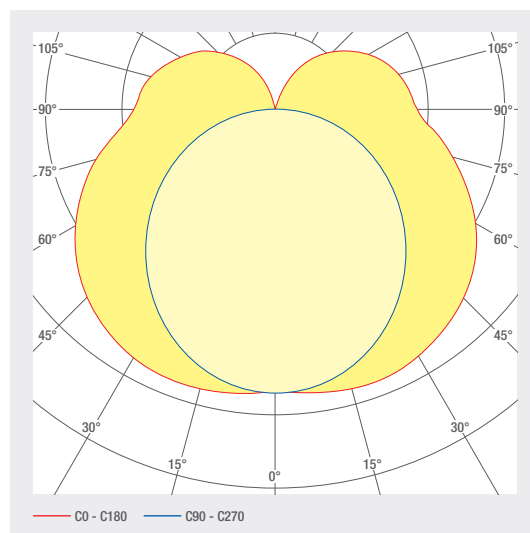
- Anodised aluminium channel
- With integrated control gear
- Cover made of opal PMMA for absolutely homogeneous illumination
- Die-cast aluminium end caps, painted in profile colour, no visible screws
- Service life: 50 000 h LM-80 > 50 000 h
- Light colors: 2700 K / 3000 K / 4000 K / 6500 K / TW / RGB(W)
- Dimming option: DALI / 1-10V / Push Dim
- Optional: emergency lighting module with battery pack
- Optional: RAL or NCS powder coating
- Compact dimensions

LED SYSTEMS

1.330 smartLED 5643



Profile length up to 5 m one-piece, greater than 5 m multi-piece



ART. NO.	DESIGNATION	CHARACTERISTICS				
1006661	Power supply TW (DT8) without through wiring	230 VAC INPUT	100 W	DALI CONTROL		
1006658	Power supply plug-in RGBW (DT8) with through-wiring	230 VAC INPUT	100 W	DALI CONTROL		
1006655	Power supply RGB (DT8) without through wiring	230 VAC INPUT	100 W	DALI CONTROL		
1006656	Power supply plug-in RGB (DT8) with through-wiring	230 VAC INPUT	100 W	DALI CONTROL		
1006662	Power supply plug-in TW (DT8) with through-wiring	230 VAC INPUT	100 W	DALI CONTROL		
1006657	Power supply RGBW (DT8) without through wiring	230 VAC INPUT	100 W	DALI CONTROL		
1007582	Power supply plug-in unit with through-wiring	230 VAC INPUT	150 W	DALI CONTROL	PUSH CONTROL	
1007311	Power supply unit without through wiring	230 VAC INPUT	150 W			
1007583	Power supply unit without through-wiring	230 VAC INPUT	150 W	DALI CONTROL	PUSH CONTROL	
1007309	Power supply plug-in unit with through-wiring	230 VAC INPUT	150 W			
1006715	Power supply unit without through wiring	230 VAC INPUT	35 W			
1006173	Power supply plug-in unit with through-wiring	230 VAC INPUT	35 W	DALI CONTROL		
1006701	Power supply plug-in unit with through-wiring	230 VAC INPUT	35 W			
1006174	Power supply unit without through wiring	230 VAC INPUT	35 W	DALI CONTROL	PUSH CONTROL	
1006192	Power supply unit without through wiring	230 VAC INPUT	60 W	DALI CONTROL	PUSH CONTROL	
1006193	Power supply plug-in unit with through-wiring	230 VAC INPUT	60 W	DALI CONTROL		
1000900	Power supply unit without through-wiring	230 VAC INPUT	100 W	DALI CONTROL	PUSH CONTROL	
1000901	Power supply unit without through-wiring	230 VAC INPUT	100 W			
1003735	Power supply unit without through-wiring	230 VAC INPUT	70 W	DALI CONTROL	PUSH CONTROL	
1000902	Power supply unit without through-wiring	230 VAC INPUT	60 W			
1002749	Slide-in power supply unit with through-wiring	230 VAC INPUT	100 W			
1002750	Slide-in power supply unit with through-wiring	230 VAC INPUT	60 W			
1002751	Slide-in power supply unit with through-wiring	230 VAC INPUT	100 W	DALI CONTROL		
1003737	Power supply unit with through-wiring	230 VAC INPUT	70 W	DALI CONTROL		
1006106	smartLED 5643	24 V DC INPUT	25.8 W/M	DIFFUSED BEAM	RGB	120 LED/M

LED SYSTEMS

1.330 smartLED 5643

ART. NO.	DESIGNATION	CHARACTERISTICS									
1006107	smartLED 5643	24 V DC INPUT	19.2 W/M	DIFFUSED BEAM	RGBW 6500 K	98 LED/M					
1006180	smartLED 5643	24 V DC INPUT	19.2 W/M	DIFFUSED BEAM	RGBW 6500 K	98 LED/M					
1006109	smartLED 5643	24 V DC INPUT	19.2 W/M	DIFFUSED BEAM	RGBWW 3000 K	98 LED/M					
1002889	smartLED 5643	24 V DC INPUT	22 W/M	DIFFUSED BEAM	2700 K CRI>80	133 LED/M	2983 LM/M	D A ↑ G	SDCM3		
1002946	smartLED 5643	24 V DC INPUT	12 W/M	DIFFUSED BEAM	2700 K CRI>80	133 LED/M	1576 LM/M	D A ↑ G	SDCM3		
1006010	smartLED 5643	24 V DC INPUT	7 W/M	DIFFUSED BEAM	2700 K CRI>80	133 LED/M	985 LM/M	D A ↑ G	SDCM3		
1006011	smartLED 5643	24 V DC INPUT	18 W/M	DIFFUSED BEAM	2700 K CRI>80	133 LED/M	2390 LM/M	D A ↑ G	SDCM3		
1002890	smartLED 5643	24 V DC INPUT	22 W/M	DIFFUSED BEAM	3000 K CRI>80	133 LED/M	3092 LM/M	D A ↑ G	SDCM3		
1002947	smartLED 5643	24 V DC INPUT	12 W/M	DIFFUSED BEAM	3000 K CRI>80	133 LED/M	1634 LM/M	D A ↑ G	SDCM3		
1006013	smartLED 5643	24 V DC INPUT	18 W/M	DIFFUSED BEAM	3000 K CRI>80	133 LED/M	2477 LM/M	D A ↑ G	SDCM3		
1006012	smartLED 5643	24 V DC INPUT	7 W/M	DIFFUSED BEAM	3000 K CRI>80	133 LED/M	1021 LM/M	D A ↑ G	SDCM3		
1002982	smartLED 5643	24 V DC INPUT	12 W/M	DIFFUSED BEAM	4000 K CRI>80	133 LED/M	1735 LM/M	D A ↑ G	SDCM3		
1002891	smartLED 5643	24 V DC INPUT	22 W/M	DIFFUSED BEAM	4000 K CRI>80	133 LED/M	3285 LM/M	D A ↑ G	SDCM3		
1006015	smartLED 5643	24 V DC INPUT	18 W/M	DIFFUSED BEAM	4000 K CRI>80	133 LED/M	2631 LM/M	D A ↑ G	SDCM3		
1006014	smartLED 5643	24 V DC INPUT	7 W/M	DIFFUSED BEAM	4000 K CRI>80	133 LED/M	1085 LM/M	D A ↑ G	SDCM3		
1006477	smartLED 5643	24 V DC INPUT	18 W/M	DIFFUSED BEAM	2700 - 6500 K CRI>80	120 LED/M	1886 LM/M	E A ↑ G	SDCM3		
1001671	smartLED 5643	24 V DC INPUT	12 W/M	DIFFUSED BEAM	2700 K CRI>90	133 LED/M	1359 LM/M	E A ↑ G	SDCM3		
1001666	smartLED 5643	24 V DC INPUT	22 W/M	DIFFUSED BEAM	2700 K CRI>90	133 LED/M	2573 LM/M	E A ↑ G	SDCM3		
1006016	smartLED 5643	24 V DC INPUT	7 W/M	DIFFUSED BEAM	2700 K CRI>90	133 LED/M	850 LM/M	E A ↑ G	SDCM3		
1006017	smartLED 5643	24 V DC INPUT	18 W/M	DIFFUSED BEAM	2700 K CRI>90	133 LED/M	2061 LM/M	E A ↑ G	SDCM3		
1001665	smartLED 5643	24 V DC INPUT	22 W/M	DIFFUSED BEAM	3000 K CRI>90	133 LED/M	2637 LM/M	E A ↑ G	SDCM3		
1001668	smartLED 5643	24 V DC INPUT	12 W/M	DIFFUSED BEAM	3000 K CRI>90	133 LED/M	1394 LM/M	E A ↑ G	SDCM3		
1006018	smartLED 5643	24 V DC INPUT	7 W/M	DIFFUSED BEAM	3000 K CRI>90	133 LED/M	871 LM/M	E A ↑ G	SDCM3		
1006019	smartLED 5643	24 V DC INPUT	18 W/M	DIFFUSED BEAM	3000 K CRI>90	133 LED/M	2113 LM/M	E A ↑ G	SDCM3		
1001664	smartLED 5643	24 V DC INPUT	22 W/M	DIFFUSED BEAM	4000 K CRI>90	133 LED/M	2761 LM/M	E A ↑ G	SDCM3		
1001667	smartLED 5643	24 V DC INPUT	12 W/M	DIFFUSED BEAM	4000 K CRI>90	133 LED/M	1459 LM/M	E A ↑ G	SDCM3		
1006021	smartLED 5643	24 V DC INPUT	18 W/M	DIFFUSED BEAM	4000 K CRI>90	133 LED/M	2212 LM/M	E A ↑ G	SDCM3		

ART. NO.	DESIGNATION	CHARACTERISTICS							
1006020	smartLED 5643	24 V DC INPUT	7 W/M	DIFFUSED BEAM	4000 K CRI>90	133 LED/M	912 LM/M	E A G	SDCM3

Lighting design

RELUX®

click on the Relux icon to access our lighting design data directly

Accessories

ART. NO.	DESIGNATION
1002981	Pendant profile for smartLED 5643
2101119	WAGO connecting cable, 230 V, 3-pin, 3 m long
2002095	IP65 protective coating
1001689	Transparent encapsulation, IP67

Technical data

Storage temperature	50 ... +25 °C
Max. surface temperature	65 °C
Shock rating	IK03
Protection type (IP)	IP20
Ambient temperature t_a	25 °C
Service life L80B10 (h) @ $t_a = 25^\circ\text{C}$	50000 h


1
5
4

kitchen ground floor
smartLED 1919 45° / 11W/m / 2700K / IP20
Art. Nr. : 1000881

3
Länge:
Länge tot:

7
8
9
6
24V
2800 mm
11000 mm

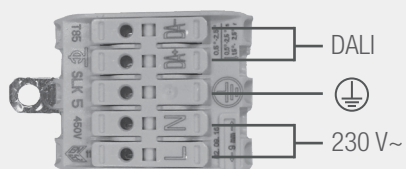
2
1/2

11

209583-01010100
10
smaterion ag, Zeughausstrasse 10, 8887 Mels

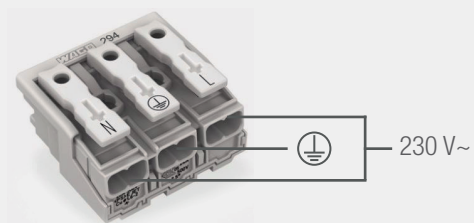
- 1 Position, e.g. kitchen
- 2 Profile part for multi-part lengths, e.g. $\frac{1}{3}$, $\frac{2}{3}$, $\frac{3}{3}$
- 3 Length profile
- 4 Item number
- 5 Profile type, e.g. smartLED 1216
- 6 Voltage, e.g. 24 V
- 7 Power, e.g. 23W/m
- 8 Color temperature, e.g. 3000K
- 9 IP protection, e.g. IP20
- 10 Manufacturer address
- 11 QR code with unique identification ID

Electrical connection

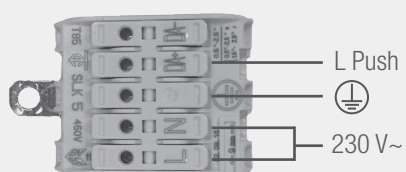
DALI



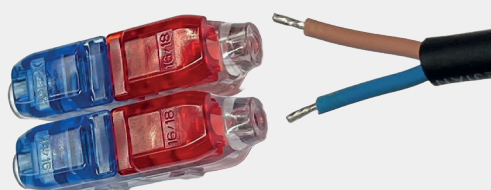
ON/OFF



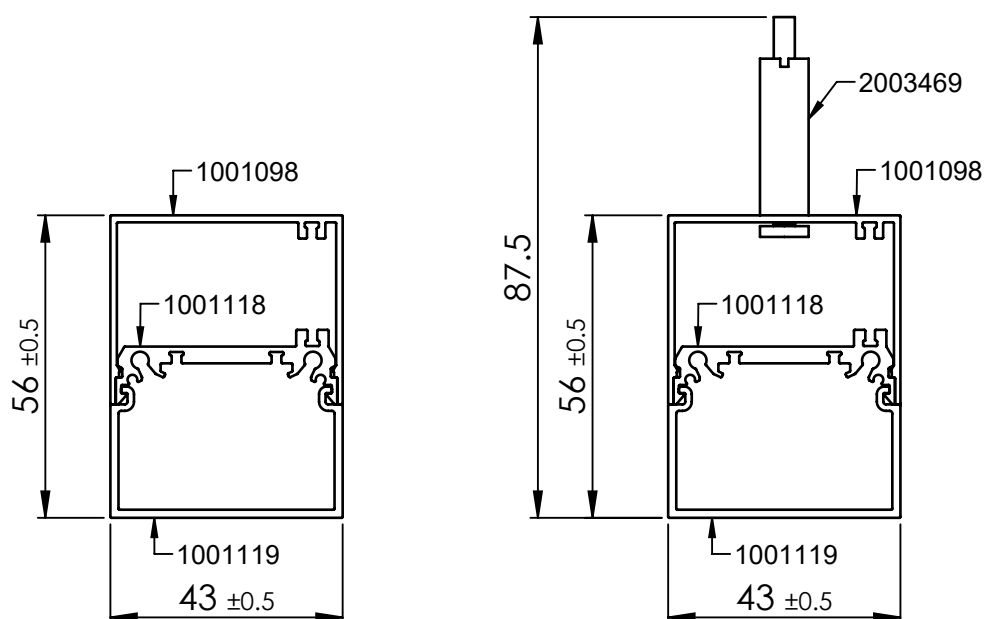
PUSH DIM



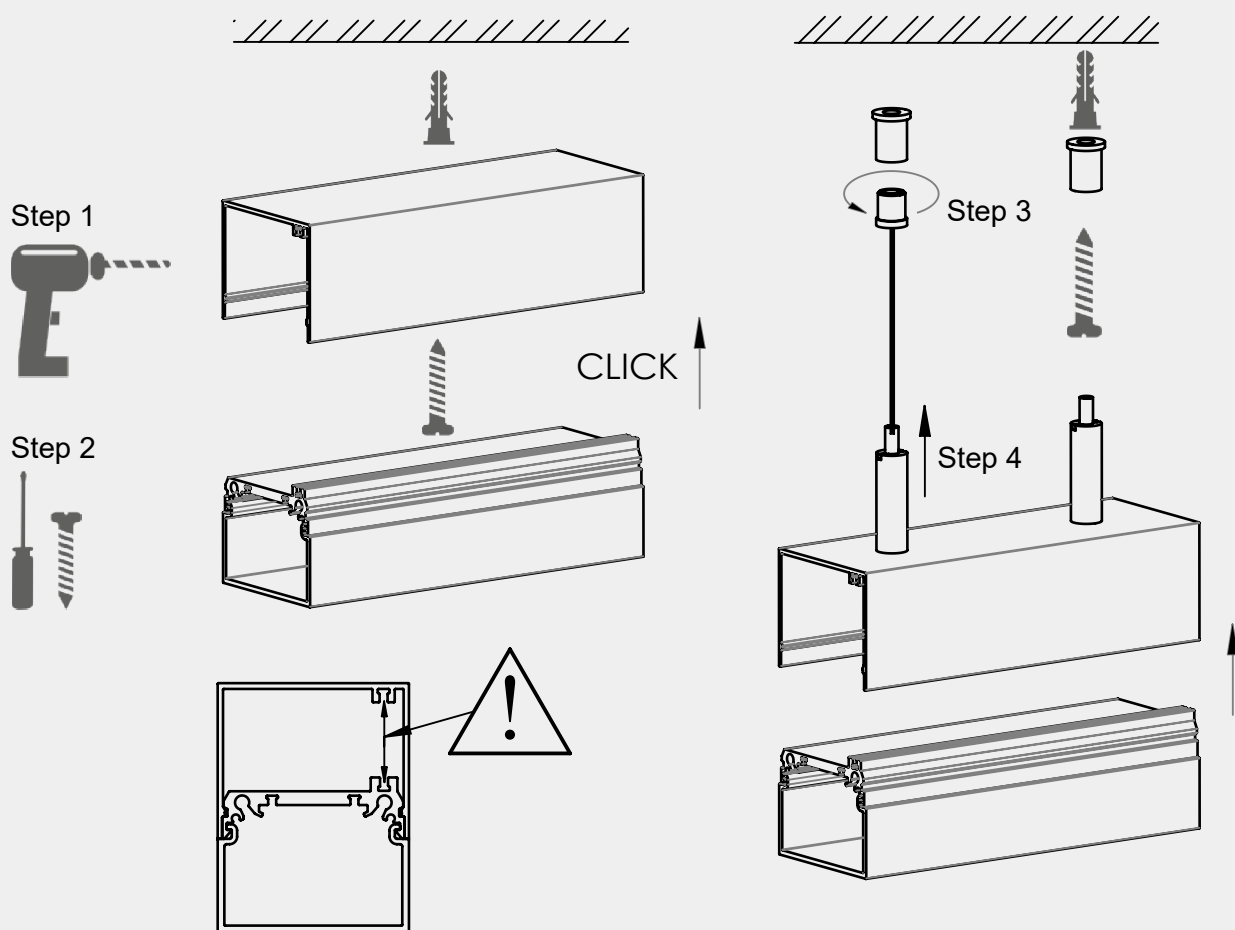
IP67 Option



Dimensions



Assembly instructions



It is absolutely essential to earth all metal parts of the housing! Attention: For profile lengths > 800mm, the position of the feed must be requested.

Cleaning and care

Wipe the luminaire clean using a damp, lint-free cloth. Do not scrub! If heavily soiled, wipe clean with a mild solution of warm soapy water (microfibre cloth and washing-up liquid). Do not use a scouring agent. Do not rub the luminaire dry, as the resulting static may damage the electronic components beyond repair.

Warnings

The equipment may only be installed and put into service by authorised technical personnel (electrical fitters). The luminaire is designed solely for lighting applications and is to be installed according to the installation regulations. Any other form of use or installation is considered to be improper. Failure to comply with the installation instructions can damage the luminaire beyond repair. Return to the manufacturer if any defects are identified. The installation instructions must be retained for future reference. Subject to technical changes. Not to be installed on a wet or conductive substrate. The luminaire is only to be installed, put into service or modified in any way by authorised skilled personnel (a qualified electrician). National installation regulations must be observed. Before any work is performed on the luminaire, it must be disconnected from mains. Hot plug-in is not an option and may cause damage to the luminaire! The manufacturer is not liable for damage resulting from improper/faulty installation or operation, or from unauthorised modifications to the luminaire. The light source contained in this luminaire is only to be replaced by the manufacturer, a service technician authorised by the manufacturer or a similarly qualified person. Caution, risk of electric shock! In the event of questions or queries, please contact the manufacturer.



Disconnect the luminaire from the power supply.



Caution, risk of electric shock!



DISPOSAL

The packaging must be recycled via the DSD (Green Dot) scheme or its equivalent. Dispose of the packaging correctly sorted. Waste electrical and electronic equipment must never be disposed of together with household waste. In accordance with the EU directives, the device must be disposed of in an orderly manner at the end of its service life. This means having the materials contained in the device recycled to avoid polluting the environment. Take the waste equipment to a collection point for electrical and electronic waste or to a recycling depot. For further information, please contact your local waste disposal service or your local authority.



The LED board(s) can only be replaced by smarterion as the manufacturer. Please do not attempt to replace the components yourself, as this will void the warranty and CE conformity.



The power supply can only be replaced by smarterion as the manufacturer. Please do not attempt to replace the components yourself, as this will void the warranty and CE conformity.

IP20

Protected against ingress of solid foreign objects with a diameter of more than 12.5 mm.



Class I luminaires with earth connector. It is absolutely essential to earth the luminaire housing.

DALI CONTROL

The luminaire is dimmable by DALI. Please observe the DALI specifications. The DALI cable must meet the specification of a mains cable: 230V