

## DATA SHEET

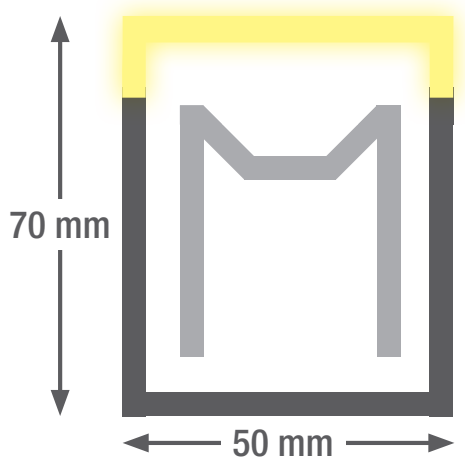
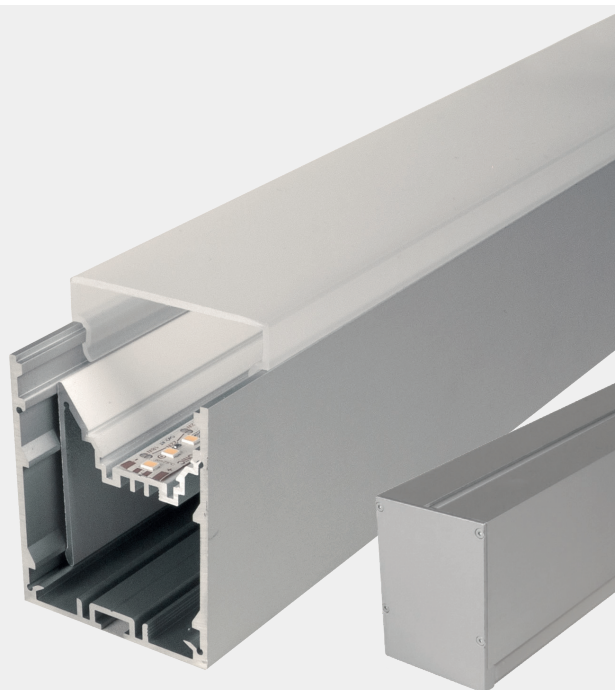
# smartLED 7050

This elegant and refined LED strip light system is extremely compact and is made from anodised aluminium. The optic is available with a low-profile opal diffuser (version 6050) or with a cuboid diffuser (version 7050) that also brings indirect light into the room.

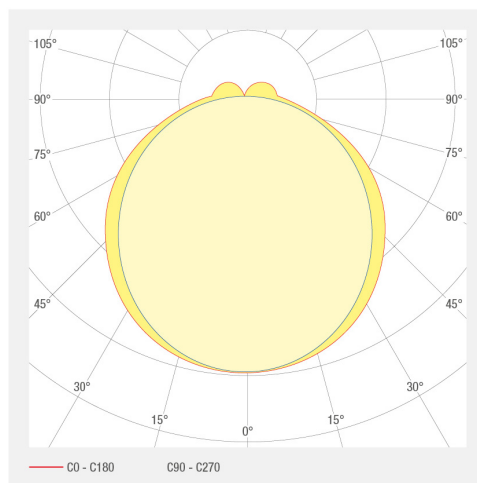
- Anodised aluminium channel
- With integrated control gear
- Cover made of opal PMMA for absolutely homogeneous illumination
- Die-cast aluminium end caps, painted in profile colour
- Service life: 50 000 h LM-80 > 50 000 h
- Light colors: 2700 K / 3000 K / 4000 K / 6500 K / TW / RGB(W)
- Dimming option: DALI / 1-10V / Push dim
- Optional: emergency lighting module with battery pack
- Optional: RAL or NCS powder coating
- Ceiling illumination via cubic cover

## LED SYSTEMS

# 1.322 smartLED 7050



Profile length up to 5 m one-piece, greater than 5 m multi-piece



7050

ART. NO.	DESIGNATION	CHARACTERISTICS						
1000718	Anodised aluminium profile 7050, incl. opal U-shaped cover							
1006102	LED insert for smartLED 6050/7050							
1006103	LED insert for smartLED 6050/7050							
1006104	LED insert for smartLED 6050/7050							
1006105	LED insert for smartLED 6050/7050							
1002886	LED insert for smartLED 6050/7050							
1002943	LED insert for smartLED 6050/7050							
1006022	LED insert for smartLED 6050/7050							
1006023	LED insert for smartLED 6050/7050							
1002887	LED insert for smartLED 6050/7050							
1002944	LED insert for smartLED 6050/7050							
1006024	LED insert for smartLED 6050/7050							
1006025	LED insert for smartLED 6050/7050							
1002888	LED insert for smartLED 6050/7050							
1002945	LED insert for smartLED 6050/7050							
1006026	LED insert for smartLED 6050/7050							
1006027	LED insert for smartLED 6050/7050							
1006476	LED insert for smartLED 6050/7050							
1000761	LED insert for smartLED 6050/7050							
1000762	LED insert for smartLED 6050/7050							
1006028	LED insert for smartLED 6050/7050							
1006029	LED insert for smartLED 6050/7050							
1000759	LED insert for smartLED 6050/7050							
1000763	LED insert for smartLED 6050/7050							
1006030	LED insert for smartLED 6050/7050							
1006031	LED insert for smartLED 6050/7050							
1000760	LED insert for smartLED 6050/7050							

## LED SYSTEMS

1.322 smartLED 7050

ART. NO.	DESIGNATION	CHARACTERISTICS						
1000764	LED insert for smartLED 6050/7050	230 VAC INPUT	12 W/M	4000 K CRI>90	133 LED/M	RELUXX	E A ↑ G	SDCM3
1006032	LED insert for smartLED 6050/7050	230 VAC INPUT	7 W/M	4000 K CRI>90	133 LED/M	RELUXX	E A ↑ G	SDCM3
1006033	LED insert for smartLED 6050/7050	230 VAC INPUT	18 W/M	4000 K CRI>90	133 LED/M	RELUXX	E A ↑ G	SDCM3
1006967	Power supply unit without through wiring	230 VAC INPUT	150 W					
1000742	Power supply unit without through-wiring	230 VAC INPUT	100 W		DALI CONTROL	PUSH CONTROL		
1000744	Power supply unit without through-wiring	230 VAC INPUT	100 W					
1006194	Power supply unit without through wiring	230 VAC INPUT	60 W		DALI CONTROL	PUSH CONTROL		
1000010	Power supply unit without through-wiring	230 VAC INPUT	60 W					
1006175	Power supply unit without through wiring	230 VAC INPUT	35 W		DALI CONTROL	PUSH CONTROL		
1006713	Power supply unit without through wiring	230 VAC INPUT	35 W					
1000741	Slide-in power supply unit with through-wiring	230 VAC INPUT	100 W		DALI CONTROL			
1000745	Slide-in power supply unit with through-wiring	230 VAC INPUT	100 W					
1006195	Power supply plug-in unit with through-wiring	230 VAC INPUT	60 W		DALI CONTROL			
1012711	Slide-in power supply unit with through-wiring	230 VAC INPUT	60 W		DALI CONTROL			
1006177	Power supply plug-in unit with through-wiring	230 VAC INPUT	35 W		DALI CONTROL			
1006714	Power supply plug-in unit with through-wiring	230 VAC INPUT	35 W					
1006535	Power supply plug-in RGB (DT8) with through-wiring	230 VAC INPUT	100 W		DALI CONTROL			
1006536	Power supply plug-in unit RGBW (DT8) with through-wiring	230 VAC INPUT	100 W		DALI CONTROL			
1006640	Power supply plug-in TW (DT8) with through-wiring	230 VAC INPUT	100 W		DALI CONTROL			
1006533	Power supply RGB (DT8) without through wiring	230 VAC INPUT	100 W		DALI CONTROL			
1006534	Power supply RGBW (DT8) without through wiring	230 VAC INPUT	100 W		DALI CONTROL			
1006639	Power supply plug-in TW (DT8) with through-wiring	230 VAC INPUT	100 W		DALI CONTROL			

## Accessories



Art. No.  
1001755



Art. No.  
1001756



Art. No.  
1004863



Art. No.  
1004864

## ART. NO.

## DESIGNATION

1001755	Profile connector (mechanical)
1001756	Profile connector (mechanical) 90°
1004863	WAGO Winsta connecting cable, 3-pole, can be assembled up to 5 m
1004864	WAGO Winsta connecting cable, 5-pole, can be assembled up to 5 m
2101119	WAGO connecting cable, 230 V, 3-pin, 3 m long
2101127	WAGO connecting cable, 230 V AC, 5-pin, 3 m long

## Technical data

Storage temperature	-10 ... +40 °C
Max. surface temperature	65 °C
Shock rating	IK03
Protection type (IP)	IP20
Ambient temperature $t_a$	25 °C
Service life L80B10 (h) @ $t_a = 25^\circ\text{C}$	50000 h

1  
kitchen ground floor  
5 smartLED 1919 45° / 11W/m / 2700K / IP20  
4 Art. Nr. : 1000881

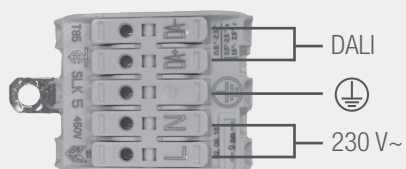
7  
8  
9  
6 24V  
3 Länge: 2800 mm  
Länge tot: 11000 mm  
1/2

11  
209583-01010100  
10 smaterion ag, Zeughausstrasse 10, 8887 Mels

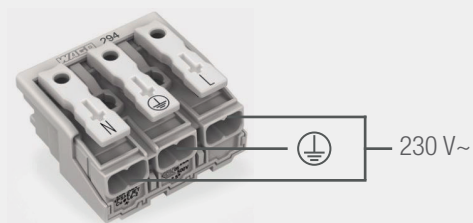
- |   |  |
|---|--|
| 1 Position, e.g. kitchen  | 7 Power, e.g. 23W/m                      |
| 2 Profile part for multi-part lengths, e.g. $\frac{1}{3}$ , $\frac{2}{3}$ , $\frac{3}{3}$ | 8 Color temperature, e.g. 3000K          |
| 3 Length profile  | 9 IP protection, e.g. IP20               |
| 4 Item number   | 10 Manufacturer address                  |
| 5 Profile type, e.g. smartLED 1216  | 11 QR code with unique identification ID |
| 6 Voltage, e.g. 24 V  |  |

## Electrical connection

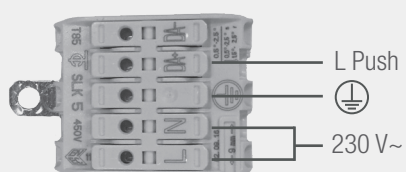
DALI



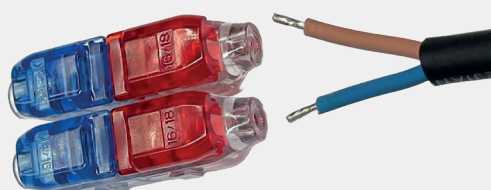
ON/OFF



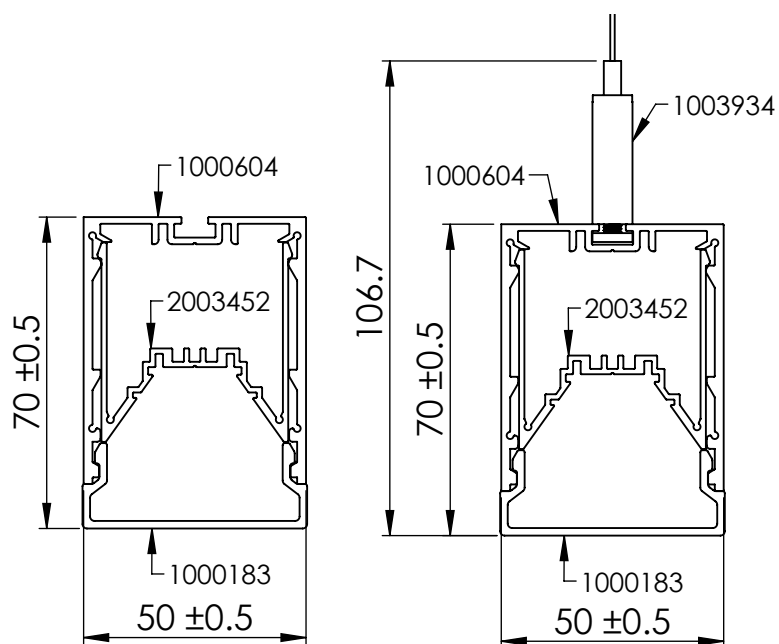
PUSH DIM



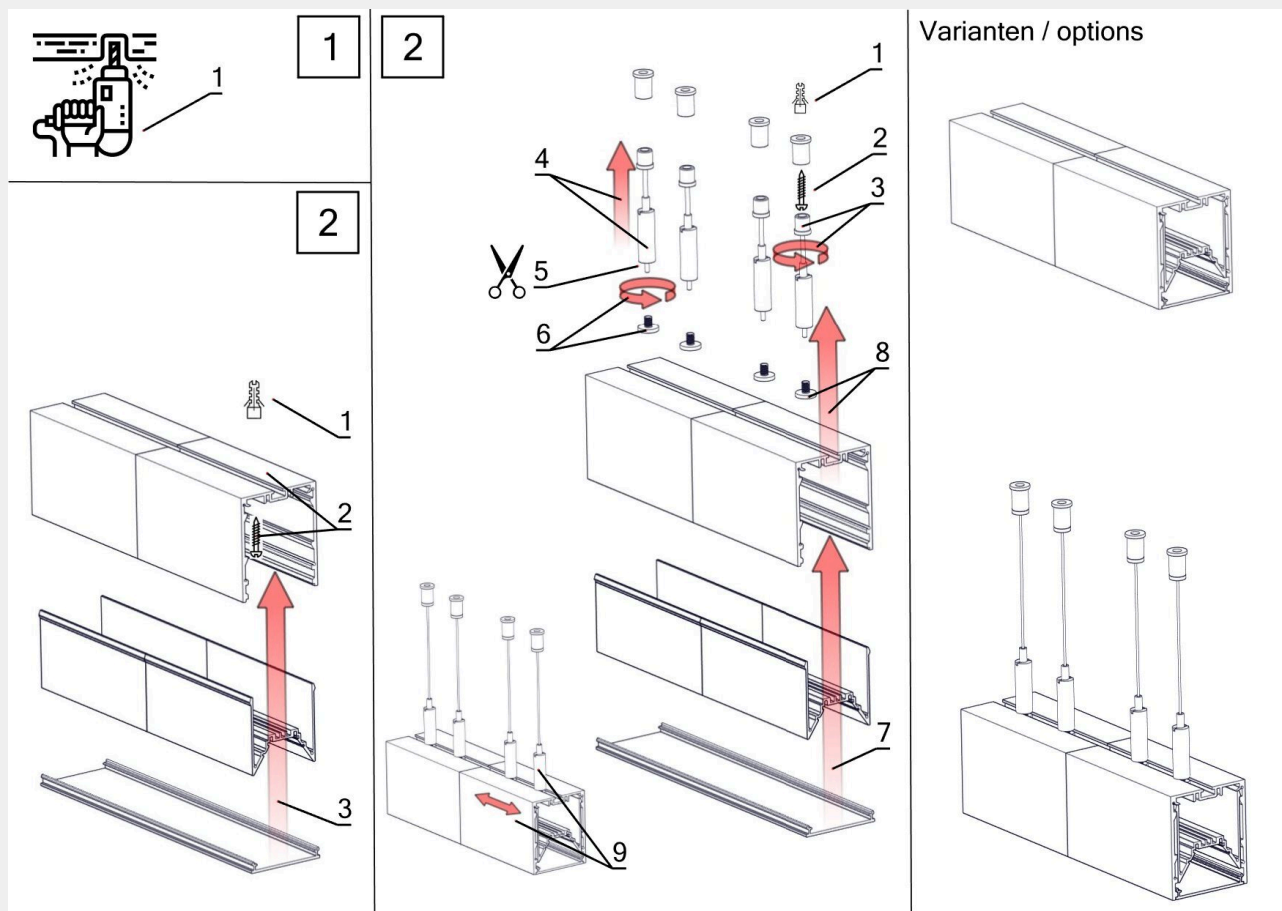
IP67 Option



## Dimensions



## Assembly instructions



### Cleaning and care

Wipe the luminaire clean using a damp, lint-free cloth. Do not scrub! If heavily soiled, wipe clean with a mild solution of warm soapy water (microfibre cloth and washing-up liquid). Do not use a scouring agent. Do not rub the luminaire dry, as the resulting static may damage the electronic components beyond repair.

### Warnings

The equipment may only be installed and put into service by authorised technical personnel (electrical fitters). The luminaire is designed solely for lighting applications and is to be installed according to the installation regulations. Any other form of use or installation is considered to be improper. Failure to comply with the installation instructions can damage the luminaire beyond repair. Return to the manufacturer if any defects are identified. The installation instructions must be retained for future reference. Subject to technical changes. Not to be installed on a wet or conductive substrate. The luminaire is only to be installed, put into service or modified in any way by authorised skilled personnel (a qualified electrician). National installation regulations must be observed. Before any work is performed on the luminaire, it must be disconnected from mains. Hot plug-in is not an option and may cause damage to the luminaire! The manufacturer is not liable for damage resulting from improper/faulty installation or operation, or from unauthorised modifications to the luminaire. The light source contained in this luminaire is only to be replaced by the manufacturer, a service technician authorised by the manufacturer or a similarly qualified person. Caution, risk of electric shock! In the event of questions or queries, please contact the manufacturer.



Disconnect the luminaire from the power supply.



Caution, risk of electric shock!



#### DISPOSAL

The packaging must be recycled via the DSD (Green Dot) scheme or its equivalent. Dispose of the packaging correctly sorted. Waste electrical and electronic equipment must never be disposed of together with household waste. In accordance with the EU directives, the device must be disposed of in an orderly manner at the end of its service life. This means having the materials contained in the device recycled to avoid polluting the environment. Take the waste equipment to a collection point for electrical and electronic waste or to a recycling depot. For further information, please contact your local waste disposal service or your local authority.



The LED board(s) can only be replaced by smarterion as the manufacturer. Please do not attempt to replace the components yourself, as this will void the warranty and CE conformity.



The power supply can only be replaced by smarterion as the manufacturer. Please do not attempt to replace the components yourself, as this will void the warranty and CE conformity.

## IP20

Protected against ingress of solid foreign objects with a diameter of more than 12.5 mm.



Class I luminaires with earth connector. It is absolutely essential to earth the luminaire housing.