



DATA SHEET

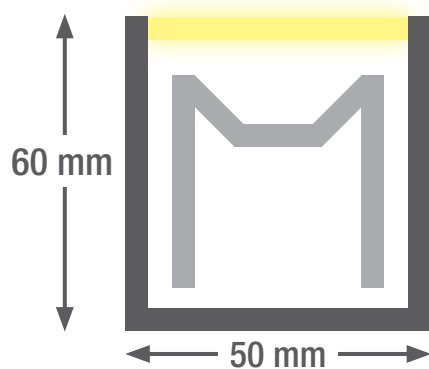
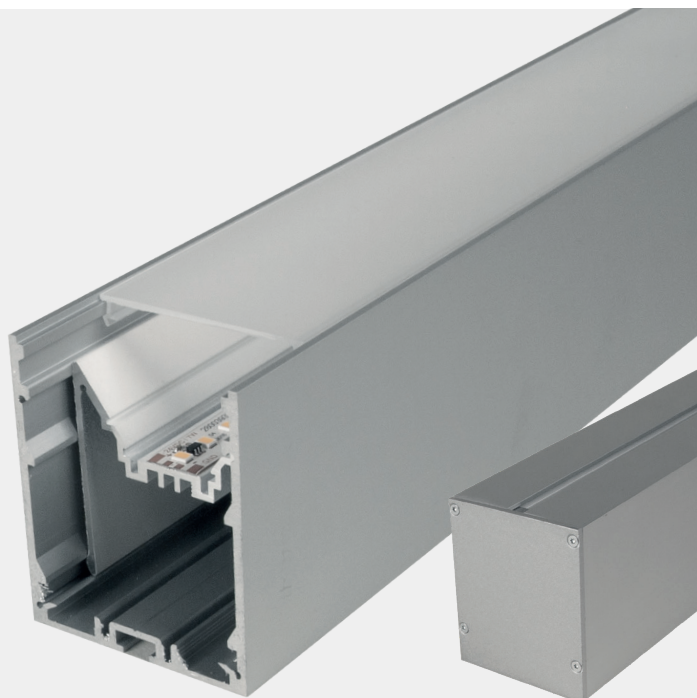
smartLED 6050

This elegant and refined LED strip light system is extremely compact and is made from anodised aluminium. The optic is available with a low-profile opal diffuser (version 6050) or with a cuboid diffuser (version 7050) that also brings indirect light into the room. In the case of version 6050, the line is also available with a microprismatic optic for office applications with increased demands.

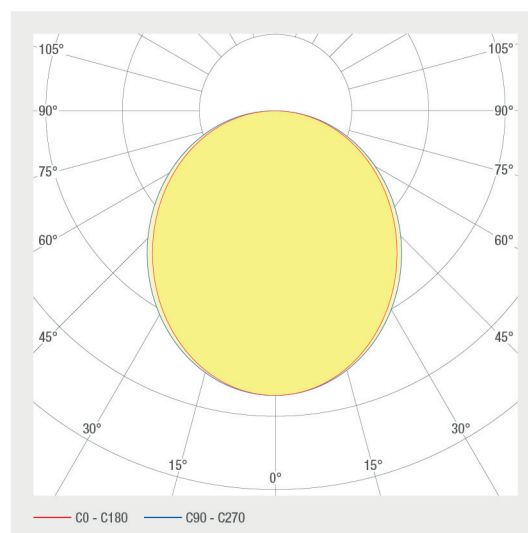
- Anodised aluminium channel
- With integrated control gear
- Opal PMMA or microprismatic cover
- Die-cast aluminium end caps, painted in profile colour
- Service life: 50 000 h LM-80 > 50'000 h
- Light colors: 2700 K / 3000 K / 4000 K / 6500K / TW / RGB(W)
- Dimming option: DALI / 1-10V / Push Dim
- Optional: emergency lighting module with battery pack
- Optional: RAL or NCS powder coating
- WAGO Winsta through-wiring

LED SYSTEMS

1.321 smartLED 6050



Profile length up to 5 m one-piece, greater than 5 m multi-piece



| ART. NO. | DESIGNATION | CHARACTERISTICS | | | | | | | | | |
|----------|---|---|---|---|---|---|---|---|--|--|--|
| 1004549 | Anodised aluminium profile 6050, incl. microprismatic cover |  | | | | | | | | | |
| 1000716 | Anodised aluminium profile 6050, incl. opal cover |  | | | | | | | | | |
| 1006102 | LED insert for smartLED 6050/7050 |  |  |  |  | | | | | | |
| 1006103 | LED insert for smartLED 6050/7050 |  |  |  |  | | | | | | |
| 1006104 | LED insert for smartLED 6050/7050 |  |  |  |  | | | | | | |
| 1006105 | LED insert for smartLED 6050/7050 |  |  |  |  | | | | | | |
| 1002943 | LED insert for smartLED 6050/7050 |  |  |  |  |  |  |  | | | |
| 1002886 | LED insert for smartLED 6050/7050 |  |  |  |  |  |  |  | | | |
| 1006022 | LED insert for smartLED 6050/7050 |  |  |  |  |  |  |  | | | |
| 1006023 | LED insert for smartLED 6050/7050 |  |  |  |  |  |  |  | | | |
| 1002887 | LED insert for smartLED 6050/7050 |  |  |  |  |  |  |  | | | |
| 1002944 | LED insert for smartLED 6050/7050 |  |  |  |  |  |  |  | | | |
| 1006024 | LED insert for smartLED 6050/7050 |  |  |  |  |  |  |  | | | |
| 1006025 | LED insert for smartLED 6050/7050 |  |  |  |  |  |  |  | | | |
| 1002888 | LED insert for smartLED 6050/7050 |  |  |  |  |  |  |  | | | |
| 1002945 | LED insert for smartLED 6050/7050 |  |  |  |  |  |  |  | | | |
| 1006026 | LED insert for smartLED 6050/7050 |  |  |  |  |  |  |  | | | |
| 1006027 | LED insert for smartLED 6050/7050 |  |  |  |  |  |  |  | | | |
| 1006476 | LED insert for smartLED 6050/7050 |  |  |  |  |  |  |  | | | |
| 1000762 | LED insert for smartLED 6050/7050 |  |  |  |  |  |  |  | | | |
| 1000761 | LED insert for smartLED 6050/7050 |  |  |  |  |  |  |  | | | |
| 1006029 | LED insert for smartLED 6050/7050 |  |  |  |  |  |  |  | | | |
| 1006028 | LED insert for smartLED 6050/7050 |  |  |  |  |  |  |  | | | |
| 1000759 | LED insert for smartLED 6050/7050 |  |  |  |  |  |  |  | | | |
| 1000763 | LED insert for smartLED 6050/7050 |  |  |  |  |  |  |  | | | |
| 1006031 | LED insert for smartLED 6050/7050 |  |  |  |  |  |  |  | | | |
| 1006030 | LED insert for smartLED 6050/7050 |  |  |  |  |  |  |  | | | |

LED SYSTEMS

1.321 smartLED 6050

| ART. NO. | DESIGNATION | CHARACTERISTICS | | | | | | | |
|----------|--|-----------------|--------------|---------------|--------------|----------|---------|-------|--|
| 1000760 | LED insert for smartLED 6050/7050 | 230 VAC INPUT | 22 W/M | 4000 K CRI>90 | 133 LED/M | RELIANCE | E A ↑ G | SDCM3 | |
| 1000764 | LED insert for smartLED 6050/7050 | 230 VAC INPUT | 12 W/M | 4000 K CRI>90 | 133 LED/M | RELIANCE | E A ↑ G | SDCM3 | |
| 1006033 | LED insert for smartLED 6050/7050 | 230 VAC INPUT | 18 W/M | 4000 K CRI>90 | 133 LED/M | RELIANCE | E A ↑ G | SDCM3 | |
| 1006032 | LED insert for smartLED 6050/7050 | 230 VAC INPUT | 7 W/M | 4000 K CRI>90 | 133 LED/M | RELIANCE | E A ↑ G | SDCM3 | |
| 1000742 | Power supply unit without through-wiring | 230 VAC INPUT | 100 W | DALI CONTROL | PUSH CONTROL | | | | |
| 1000744 | Power supply unit without through-wiring | 230 VAC INPUT | 100 W | | | | | | |
| 1006640 | Power supply plug-in TW (DT8) with through-wiring | 230 VAC INPUT | 100 W | DALI CONTROL | | | | | |
| 1006639 | Power supply plug-in TW (DT8) with through-wiring | 230 VAC INPUT | 100 W | DALI CONTROL | | | | | |
| 1006536 | Power supply plug-in unit RGBW (DT8) with through-wiring | 230 VAC INPUT | 100 W | DALI CONTROL | | | | | |
| 1006535 | Power supply plug-in RGB (DT8) with through-wiring | 230 VAC INPUT | 100 W | DALI CONTROL | | | | | |
| 1006533 | Power supply RGB (DT8) without through wiring | 230 VAC INPUT | 100 W | DALI CONTROL | | | | | |
| 1006534 | Power supply RGBW (DT8) without through wiring | 230 VAC INPUT | 100 W | DALI CONTROL | | | | | |
| 1007581 | Power supply unit without through-wiring | 150 W | DALI CONTROL | PUSH CONTROL | | | | | |
| 1006967 | Power supply unit without through wiring | 230 VAC INPUT | 150 W | | | | | | |
| 1007308 | Power supply plug-in unit with through-wiring | 150 W | DALI CONTROL | | | | | | |
| 1007580 | Power supply plug-in unit with through-wiring | 150 W | DALI CONTROL | | | | | | |
| 1006177 | Power supply plug-in unit with through-wiring | 230 VAC INPUT | 35 W | DALI CONTROL | | | | | |
| 1006175 | Power supply unit without through wiring | 230 VAC INPUT | 35 W | DALI CONTROL | PUSH CONTROL | | | | |
| 1006713 | Power supply unit without through wiring | 230 VAC INPUT | 35 W | | | | | | |
| 1006714 | Power supply plug-in unit with through-wiring | 230 VAC INPUT | 35 W | | | | | | |
| 1000010 | Power supply unit without through-wiring | 230 VAC INPUT | 60 W | | | | | | |
| 1006195 | Power supply plug-in unit with through-wiring | 230 VAC INPUT | 60 W | DALI CONTROL | | | | | |
| 1006194 | Power supply unit without through wiring | 230 VAC INPUT | 60 W | DALI CONTROL | PUSH CONTROL | | | | |
| 1000741 | Slide-in power supply unit with through-wiring | 230 VAC INPUT | 100 W | DALI CONTROL | | | | | |
| 1000745 | Slide-in power supply unit with through-wiring | 230 VAC INPUT | 100 W | | | | | | |

| ART. NO. | DESIGNATION | CHARACTERISTICS |
|----------|--|--|
| 1012711 | Slide-in power supply unit with through-wiring | <div>230 VAC INPUT</div> <div>60 W</div> <div>DALI CONTROL</div> |

Lighting design

RELUX®

click on the Relux icon to access our lighting design data directly

Accessories



Art. No.
1001755



Art. No.
1001756



Art. No.
1004863



Art. No.
1004864

| ART. NO. | DESIGNATION |
|----------|--|
| 1001755 | Profile connector (mechanical) |
| 1001756 | Profile connector (mechanical) 90° |
| 1004863 | WAGO Winsta connecting cable, 3-pole, can be assembled up to 5 m |
| 1004864 | WAGO Winsta connecting cable, 5-pole, can be assembled up to 5 m |
| 2101119 | WAGO connecting cable, 230 V, 3-pin, 3 m long |
| 2101127 | WAGO connecting cable, 230 V AC, 5-pin, 3 m long |

Technical data

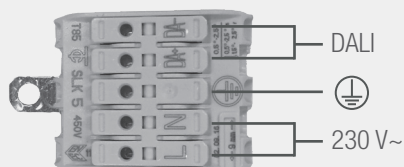
| | |
|--|----------------|
| Storage temperature | -10 ... +40 °C |
| Max. surface temperature | 65 °C |
| Shock rating | IK03 |
| Protection type (IP) | IP20 |
| Ambient temperature t_a | 25 °C |
| Service life L80B10 (h) @ $t_a = 25^\circ\text{C}$ | 50000 h |

1 kitchen ground floor **7** smartLED 1919 45° / 11W/m / 2700K / IP20 **8** 24V **9** 209583-01010100
5 Art. Nr.: 1000881 **6** 24V **2** 1/2
4 CE **3** Länge: 2800 mm Länge tot: 11000 mm **10** smaterion ag, Zeughausstrasse 10, 8887 Mels

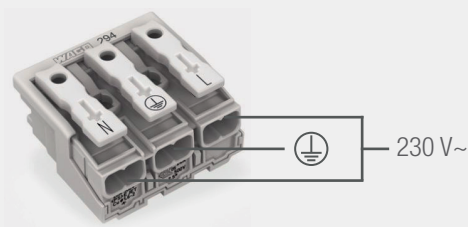
- 1** Position, e.g. kitchen
- 2** Profile part for multi-part lengths, e.g. $\frac{1}{3}$, $\frac{2}{3}$, $\frac{3}{3}$
- 3** Length profile
- 4** Item number
- 5** Profile type, e.g. smartLED 1216
- 6** Voltage, e.g. 24 V
- 7** Power, e.g. 23W/m
- 8** Color temperature, e.g. 3000K
- 9** IP protection, e.g. IP20
- 10** Manufacturer address
- 11** QR code with unique identification ID

Electrical connection

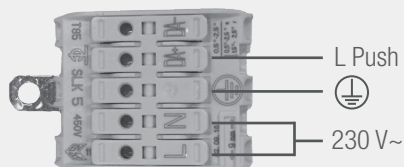
DALI



ON/OFF



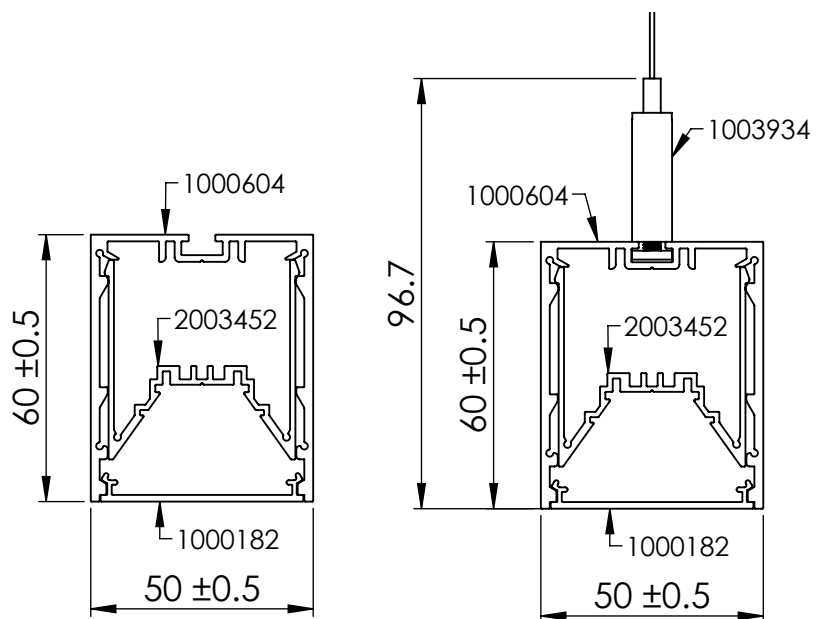
PUSH DIM



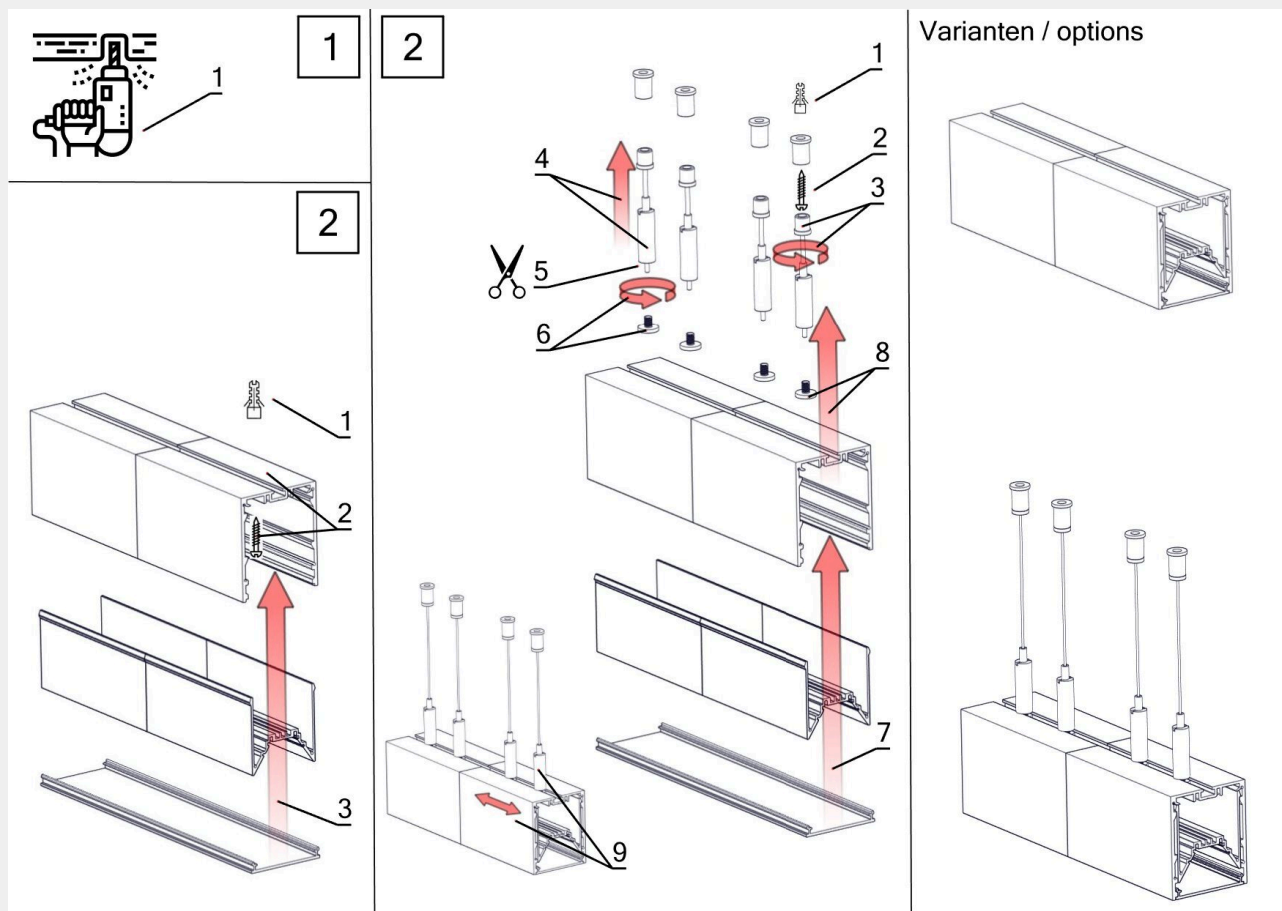
IP67 Option



Dimensions



Assembly instructions



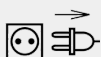
It is absolutely essential to earth the outer channel! During disassembly, use a screwdriver to pull down the inner profiles at the holes provided for this purpose.

Cleaning and care

Wipe the luminaire clean using a damp, lint-free cloth. Do not scrub! If heavily soiled, wipe clean with a mild solution of warm soapy water (microfibre cloth and washing-up liquid). Do not use a scouring agent. Do not rub the luminaire dry, as the resulting static may damage the electronic components beyond repair.

Warnings

The equipment may only be installed and put into service by authorised technical personnel (electrical fitters). The luminaire is designed solely for lighting applications and is to be installed according to the installation regulations. Any other form of use or installation is considered to be improper. Failure to comply with the installation instructions can damage the luminaire beyond repair. Return to the manufacturer if any defects are identified. The installation instructions must be retained for future reference. Subject to technical changes. Not to be installed on a wet or conductive substrate. The luminaire is only to be installed, put into service or modified in any way by authorised skilled personnel (a qualified electrician). National installation regulations must be observed. Before any work is performed on the luminaire, it must be disconnected from mains. Hot plug-in is not an option and may cause damage to the luminaire! The manufacturer is not liable for damage resulting from improper/faulty installation or operation, or from unauthorised modifications to the luminaire. The light source contained in this luminaire is only to be replaced by the manufacturer, a service technician authorised by the manufacturer or a similarly qualified person. Caution, risk of electric shock! In the event of questions or queries, please contact the manufacturer.



Disconnect the luminaire from the power supply.



Caution, risk of electric shock!



DISPOSAL

The packaging must be recycled via the DSD (Green Dot) scheme or its equivalent. Dispose of the packaging correctly sorted. Waste electrical and electronic equipment must never be disposed of together with household waste. In accordance with the EU directives, the device must be disposed of in an orderly manner at the end of its service life. This means having the materials contained in the device recycled to avoid polluting the environment. Take the waste equipment to a collection point for electrical and electronic waste or to a recycling depot. For further information, please contact your local waste disposal service or your local authority.



The LED board(s) can only be replaced by smarтерion as the manufacturer. Please do not attempt to replace the components yourself, as this will void the warranty and CE conformity.



The power supply can only be replaced by smarтерion as the manufacturer. Please do not attempt to replace the components yourself, as this will void the warranty and CE conformity.

IP20

Protected against ingress of solid foreign objects with a diameter of more than 12.5 mm.



Class I luminaires with earth connector. It is absolutely essential to earth the luminaire housing.

DALI CONTROL

The luminaire is dimmable by DALI. Please observe the DALI specifications. The DALI cable must meet the specification of a mains cable: 230V