



DATA SHEET

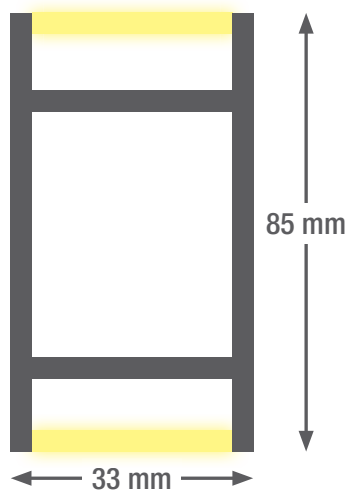
smartLED 3385 V2.0

This elegant LED strip light system is suitable for all applications that require even light distribution across walls. It features compact dimensions and is made from anodised aluminium. Any type of illumination can be selected, with a choice of downward/upward light emission or even control of individual sections. As a result, this system is perfect for providing end-to-end illumination of walls in hallways/corridors or for use as a single luminaire in living areas and office spaces. This luminaire is also available in a pendant version. The system is very easy to install thanks to the click-fit design.

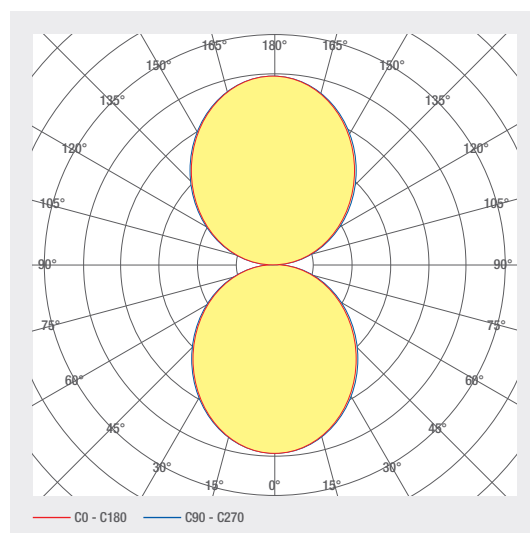
- Anodised aluminium channel
- With integrated control gear
- Cover made of opal PMMA for absolutely homogeneous illumination
- Die-cast aluminium end caps, painted in profile colour, no visible screws
- Service life: 50 000 h LM-80 > 50 000 h
- Light colors: 2700 K / 3000 K / 4000 K / 6500 K / TW / RGB(W)
- Dimming option: DALI / 1-10V / Push Dim
- Optional: emergency lighting module with battery pack
- Optional: RAL or NCS powder coating

LED SYSTEMS

1.310 smartLED 3385 V2.0



Profile length up to 5 m one-piece, greater than 5 m multi-piece



ART. NO.	DESIGNATION	CHARACTERISTICS				
1001644	Slide-in power supply unit with through-wiring	230 VAC INPUT	100 W	DALI CONTROL		
1007395	Power supply TW (DT8) without through-wiring	230 VAC INPUT	100 W	DALI CONTROL		
1001645	Slide-in power supply unit with through-wiring	230 VAC INPUT	100 W			
1006663	Power supply plug-in unit with through-wiring	230 VAC INPUT	100 W	DALI CONTROL		
1006660	Power supply plug-in unit with through-wiring	230 VAC INPUT	100 W	DALI CONTROL		
1006659	Power supply plug-in unit with through-wiring	230 VAC INPUT	100 W	DALI CONTROL		
1007310	Power supply plug-in unit with through-wiring	230 VAC INPUT	150 W			
1007584	Power supply plug-in unit with through-wiring	230 VAC INPUT	150 W	DALI CONTROL		
1001646	Slide-in power supply unit with through-wiring	230 VAC INPUT	60 W			
1008061	Power supply plug-in unit with through-wiring	230 VAC INPUT	60 W	DALI CONTROL		
1007311	Power supply unit without through wiring	230 VAC INPUT	150 W			
1007583	Power supply unit without through-wiring	230 VAC INPUT	150 W	DALI CONTROL	PUSH CONTROL	
1000900	Power supply unit without through-wiring	230 VAC INPUT	100 W	DALI CONTROL	PUSH CONTROL	
1000901	Power supply unit without through-wiring	230 VAC INPUT	100 W			
1003735	Power supply unit without through-wiring	230 VAC INPUT	70 W	DALI CONTROL	PUSH CONTROL	
1006192	Power supply unit without through wiring	230 VAC INPUT	60 W	DALI CONTROL	PUSH CONTROL	
1000902	Power supply unit without through-wiring	230 VAC INPUT	60 W			
1006174	Power supply unit without through wiring	230 VAC INPUT	35 W	DALI CONTROL	PUSH CONTROL	
1006715	Power supply unit without through wiring	230 VAC INPUT	35 W			
1006655	Power supply RGB (DT8) without through wiring	230 VAC INPUT	100 W	DALI CONTROL		
1006657	Power supply RGBW (DT8) without through wiring	230 VAC INPUT	100 W	DALI CONTROL		
1006110	smartLED 3385	24 V DC INPUT	51.6 W/M	DIFFUSED BEAM	RGB	120 LED/M
1006111	smartLED 3385	24 V DC INPUT	38.4 W/M	DIFFUSED BEAM	RGBW 5000 K	98 LED/M
1006108	smartLED 3385	24 V DC INPUT	38.4 W/M	DIFFUSED BEAM	RGBW 6000 K	98 LED/M
1006112	smartLED 3385	24 V DC INPUT	38.4 W/M	DIFFUSED BEAM	RGBWW 3000 K	98 LED/M

LED SYSTEMS

1.310 smartLED 3385 V2.0

ART. NO.	DESIGNATION	CHARACTERISTICS									
1002883	smartLED 3385	24 V DC INPUT	44 W/M	DIFFUSED BEAM	2700 K CRI>80	133 LED/M	4512 LM/M		SDCM3		
1002940	smartLED 3385	24 V DC INPUT	24 W/M	DIFFUSED BEAM	2700 K CRI>80	133 LED/M	2384 LM/M		SDCM3		
1006034	smartLED 3385	24 V DC INPUT	14 W/M	DIFFUSED BEAM	2700 K CRI>80	133 LED/M	1490 LM/M		SDCM3		
1006035	smartLED 3385	24 V DC INPUT	36 W/M	DIFFUSED BEAM	2700 K CRI>80	133 LED/M	3614 LM/M		SDCM3		
1002941	smartLED 3385	24 V DC INPUT	24 W/M	DIFFUSED BEAM	3000 K CRI>80	133 LED/M	2471 LM/M		SDCM3		
1002884	smartLED 3385	24 V DC INPUT	44 W/M	DIFFUSED BEAM	3000 K CRI>80	133 LED/M	4676 LM/M		SDCM3		
1006036	smartLED 3385	24 V DC INPUT	14 W/M	DIFFUSED BEAM	3000 K CRI>80	133 LED/M	1545 LM/M		SDCM3		
1006037	smartLED 3385	24 V DC INPUT	36 W/M	DIFFUSED BEAM	3000 K CRI>80	133 LED/M	3746 LM/M		SDCM3		
1002885	smartLED 3385	24 V DC INPUT	44 W/M	DIFFUSED BEAM	4000 K CRI>80	133 LED/M	4968 LM/M		SDCM3		
1002942	smartLED 3385	24 V DC INPUT	24 W/M	DIFFUSED BEAM	4000 K CRI>80	133 LED/M	2625 LM/M		SDCM3		
1006038	smartLED 3385	24 V DC INPUT	14 W/M	DIFFUSED BEAM	4000 K CRI>80	133 LED/M	1641 LM/M		SDCM3		
1006039	smartLED 3385	24 V DC INPUT	36 W/M	DIFFUSED BEAM	4000 K CRI>80	133 LED/M	3979 LM/M		SDCM3		
1006478	smartLED 3385	24 V DC INPUT	18 W/M	DIFFUSED BEAM	2700 - 6500 K CRI>80	120 LED/M		SDCM3			
1001126	smartLED 3385	24 V DC INPUT	24 W/M	DIFFUSED BEAM	2700 K CRI>90	133 LED/M	2055 LM/M		SDCM3		
1006040	smartLED 3385	24 V DC INPUT	14 W/M	DIFFUSED BEAM	2700 K CRI>90	133 LED/M	1285 LM/M		SDCM3		
1006099	smartLED 3385	24 V DC INPUT	36 W/M	DIFFUSED BEAM	2700 K CRI>90	133 LED/M	3117 LM/M		SDCM3		
1001125	smartLED 3385	24 V DC INPUT	24 W/M	DIFFUSED BEAM	3000 K CRI>90	133 LED/M	2108 LM/M		SDCM3		
1006041	smartLED 3385	24 V DC INPUT	14 W/M	DIFFUSED BEAM	3000 K CRI>90	133 LED/M	1318 LM/M		SDCM3		
1006100	smartLED 3385	24 V DC INPUT	36 W/M	DIFFUSED BEAM	3000 K CRI>90	133 LED/M	3195 LM/M		SDCM3		
1001124	smartLED 3385	24 V DC INPUT	24 W/M	DIFFUSED BEAM	4000 K CRI>90	133 LED/M	2207 LM/M		SDCM3		
1006042	smartLED 3385	24 V DC INPUT	14 W/M	DIFFUSED BEAM	4000 K CRI>90	133 LED/M	1380 LM/M		SDCM3		
1006101	smartLED 3385	24 V DC INPUT	36 W/M	DIFFUSED BEAM	4000 K CRI>90	133 LED/M	3345 LM/M		SDCM3		

Lighting design

RELUX®

click on the Relux icon to access our lighting design data directly

Accessories



Art. No.
1001437



Art. No.
1001438



Art. No.
1001424



Art. No.
1004863



Art. No.
1004864

ART. NO.

DESIGNATION

1001437	Profile connector (mechanical) for profile 3385 V2.0 incl. screws
1001438	Profile connector (mechanical) for profile 3385 V2.0, 90° incl. screws
1001424	Cord suspension 3m without cable outlet
1005015	Rope pendant 3 m with cable outlet
1004863	WAGO Winsta connecting cable, 3-pole, can be assembled up to 5 m
2002095	IP65 protective coating
1004864	WAGO Winsta connecting cable, 5-pole, can be assembled up to 5 m

Technical data

Storage temperature	50 ... +25 °C
Max. surface temperature	65 °C
Shock rating	IK03
Protection type (IP)	IP20
Ambient temperature t_a	25 °C
Service life L80B10 (h) @ $t_a = 25^\circ\text{C}$	50000 h

1

5

4

7

8

9

11

10

kitchen ground floor

smartLED 1919 45° / 11W/m / 2700K / IP20

Art. Nr. : 1000881

CE

3

6

2

Länge: 2800 mm
Länge tot: 11000 mm

7

11

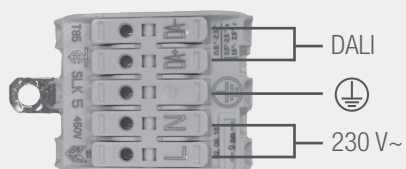
209583-01010100

smaterion ag, Zeughausstrasse 10, 8887 Mels

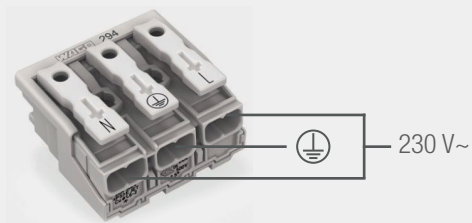
- | | |
|---|--|
| 1 Position, e.g. kitchen | 7 Power, e.g. 23W/m |
| 2 Profile part for multi-part lengths, e.g. $\frac{1}{3}$, $\frac{2}{3}$, $\frac{3}{3}$ | 8 Color temperature, e.g. 3000K |
| 3 Length profile | 9 IP protection, e.g. IP20 |
| 4 Item number | 10 Manufacturer address |
| 5 Profile type, e.g. smartLED 1216 | 11 QR code with unique identification ID |
| 6 Voltage, e.g. 24 V | |

Electrical connection

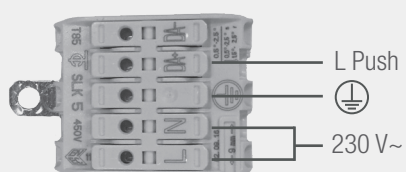
DALI



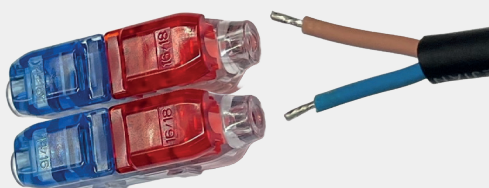
ON/OFF



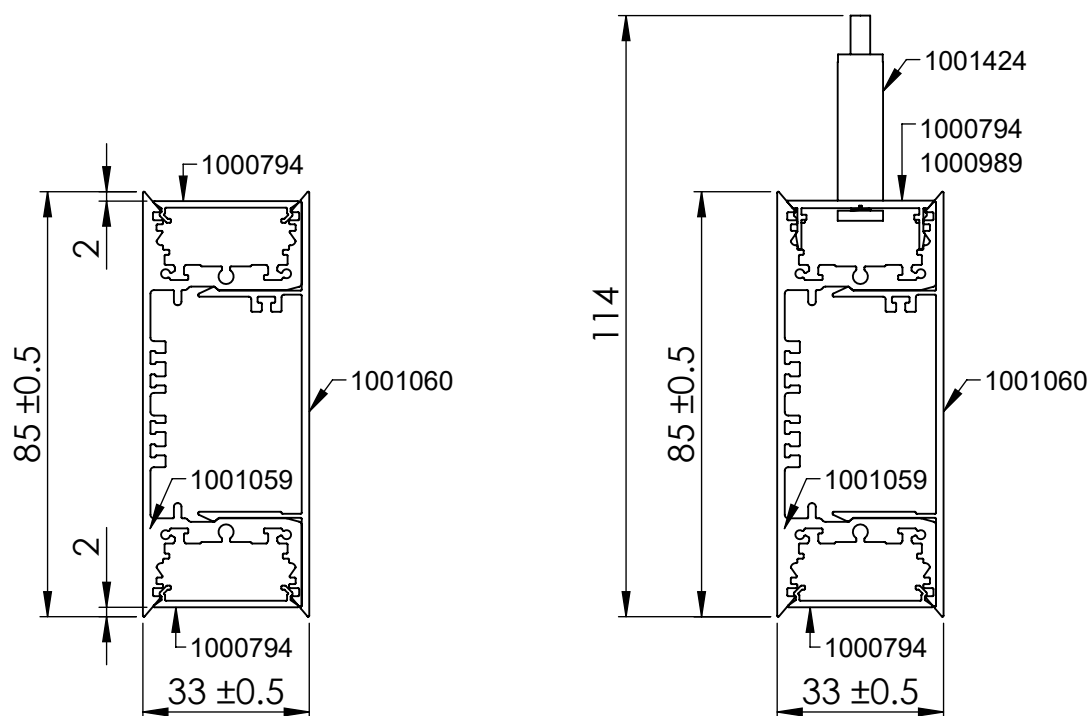
PUSH DIM



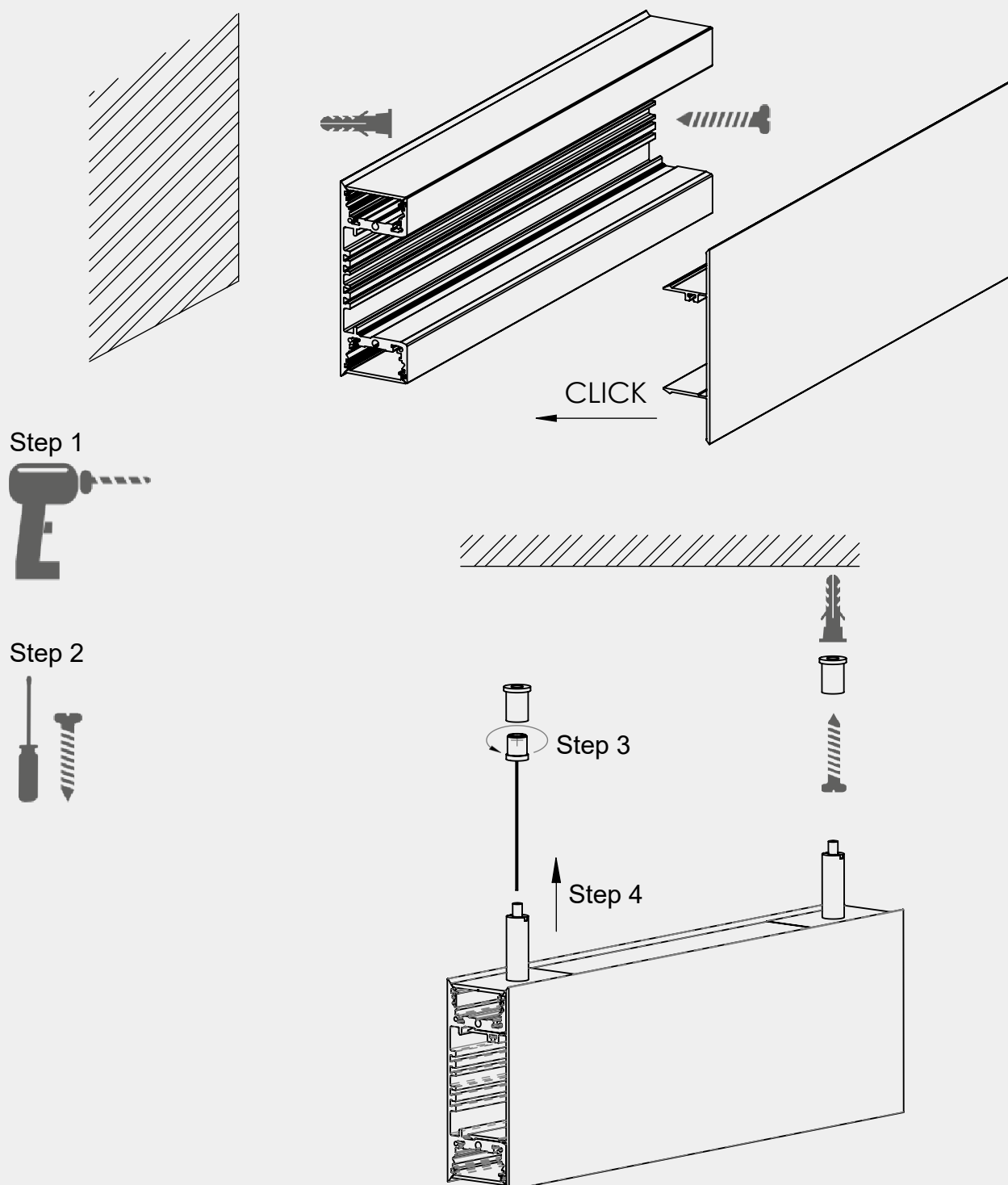
IP67 Option



Dimensions



Assembly instructions



It is absolutely essential to earth both parts of the housing!

Cleaning and care

Wipe the luminaire clean using a damp, lint-free cloth. Do not scrub! If heavily soiled, wipe clean with a mild solution of warm soapy water (microfibre cloth and washing-up liquid). Do not use a scouring agent. Do not rub the luminaire dry, as the resulting static may damage the electronic components beyond repair.

Warnings

The equipment may only be installed and put into service by authorised technical personnel (electrical fitters). The luminaire is designed solely for lighting applications and is to be installed according to the installation regulations. Any other form of use or installation is considered to be improper. Failure to comply with the installation instructions can damage the luminaire beyond repair. Return to the manufacturer if any defects are identified. The installation instructions must be retained for future reference. Subject to technical changes. Not to be installed on a wet or conductive substrate. The luminaire is only to be installed, put into service or modified in any way by authorised skilled personnel (a qualified electrician). National installation regulations must be observed. Before any work is performed on the luminaire, it must be disconnected from mains. Hot plug-in is not an option and may cause damage to the luminaire! The manufacturer is not liable for damage resulting from improper/faulty installation or operation, or from unauthorised modifications to the luminaire. The light source contained in this luminaire is only to be replaced by the manufacturer, a service technician authorised by the manufacturer or a similarly qualified person. Caution, risk of electric shock! In the event of questions or queries, please contact the manufacturer.



Disconnect the luminaire from the power supply.



Caution, risk of electric shock!



DISPOSAL

The packaging must be recycled via the DSD (Green Dot) scheme or its equivalent. Dispose of the packaging correctly sorted. Waste electrical and electronic equipment must never be disposed of together with household waste. In accordance with the EU directives, the device must be disposed of in an orderly manner at the end of its service life. This means having the materials contained in the device recycled to avoid polluting the environment. Take the waste equipment to a collection point for electrical and electronic waste or to a recycling depot. For further information, please contact your local waste disposal service or your local authority.



The LED board(s) can only be replaced by smarterion as the manufacturer. Please do not attempt to replace the components yourself, as this will void the warranty and CE conformity.



The power supply can only be replaced by smarterion as the manufacturer. Please do not attempt to replace the components yourself, as this will void the warranty and CE conformity.

IP20

Protected against ingress of solid foreign objects with a diameter of more than 12.5 mm.



Class I luminaires with earth connector. It is absolutely essential to earth the luminaire housing.

DALI CONTROL

The luminaire is dimmable by DALI. Please observe the DALI specifications. The DALI cable must meet the specification of a mains cable: 230V