

## DATA SHEET

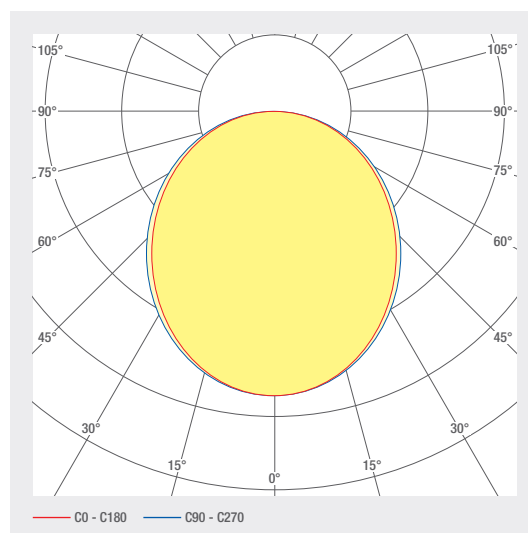
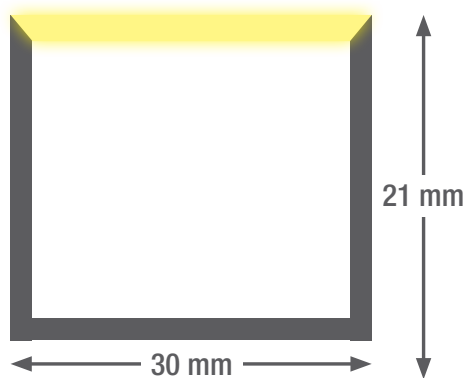
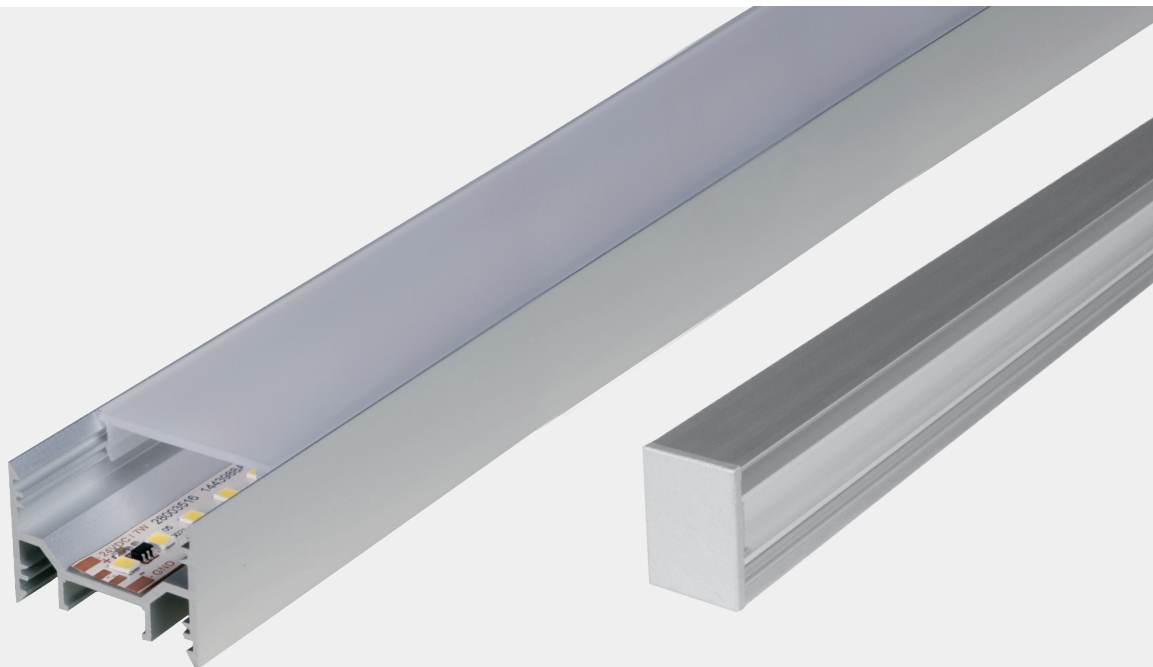
# smartLED 2130

Shapely, high quality LED light line made of anodized aluminum which meets the highest demands. Due to the variable length the application as a single luminaire as well as a light band is possible and thus guarantees a 100% homogeneous illumination over the entire appearance. Simple mounting without visible screws.

- Anodised aluminium channel
- Definable cable tap
- Cover made of opal PMMA for absolutely homogeneous illumination
- Die-cast aluminium end caps, painted in profile colour, no visible screws
- Service life: 50 000 h LM-80 > 50 000 h
- Light colors: 2700 K / 3000 K / 4000 K / 6500 K / TW / RGB(W)
- Control gear to be placed externally
- Halogen-free connection cable
- Optional: RAL or NCS powder coating
- Cable routing in the profile possible

## LED SYSTEMS



# 1.251 smartLED 2130



ART. NO.	DESIGNATION	CHARACTERISTICS									
1006779	smartLED 2130	24 V DC INPUT	25.8 W/M	RGB	120 LED/M						
1006778	smartLED 2130	24 V DC INPUT	19.2 W/M	RGBW 6500 K	98 LED/M						
1006777	smartLED 2130	24 V DC INPUT	19.2 W/M	RGBW 6000 K	98 LED/M						
1006776	smartLED 2130	24 V DC INPUT	19.2 W/M	RGBWW 3000 K	98 LED/M						
1006774	smartLED 2130	24 V DC INPUT	12 W/M	2700 K CRI>80	133 LED/M	1211 LM/M	D A ↑ G	SDCM3			
1006773	smartLED 2130	24 V DC INPUT	18 W/M	2700 K CRI>80	133 LED/M	1836 LM/M	D A ↑ G	SDCM3			
1006772	smartLED 2130	24 V DC INPUT	22 W/M	2700 K CRI>80	133 LED/M	2292 LM/M	D A ↑ G	SDCM3			
1006771	smartLED 2130	24 V DC INPUT	7 W/M	2700 K CRI>80	133 LED/M	757 LM/M	D A ↑ G	SDCM3			
1006770	smartLED 2130	24 V DC INPUT	12 W/M	3000 K CRI>80	133 LED/M	1255 LM/M	D A ↑ G	SDCM3			
1006769	smartLED 2130	24 V DC INPUT	18 W/M	3000 K CRI>80	133 LED/M	1903 LM/M	D A ↑ G	SDCM3			
1006768	smartLED 2130	24 V DC INPUT	22 W/M	3000 K CRI>80	133 LED/M	2375 LM/M	D A ↑ G	SDCM3			
1006767	smartLED 2130	24 V DC INPUT	7 W/M	3000 K CRI>80	133 LED/M	784 LM/M	D A ↑ G	SDCM3			
1006763	smartLED 2130	24 V DC INPUT	7 W/M	4000 K CRI>80	133 LED/M	834 LM/M	D A ↑ G	SDCM3			
1006765	smartLED 2130	24 V DC INPUT	18 W/M	4000 K CRI>80	133 LED/M	2021 LM/M	D A ↑ G	SDCM3			
1006766	smartLED 2130	24 V DC INPUT	12 W/M	4000 K CRI>80	133 LED/M	1333 LM/M	D A ↑ G	SDCM3			
1006764	smartLED 2130	24 V DC INPUT	22 W/M	4000 K CRI>80	133 LED/M	2524 LM/M	D A ↑ G	SDCM3			
1006775	smartLED 2130	24 V DC INPUT	24 W/M	2700 - 6500 K CRI>80	120 LED/M	1449 LM/M	E A ↑ G	SDCM3			
1006760	smartLED 2130	24 V DC INPUT	22 W/M	2700 K CRI>90	133 LED/M	1976 LM/M	E A ↑ G	SDCM3			
1006759	smartLED 2130	24 V DC INPUT	7 W/M	2700 K CRI>90	133 LED/M	653 LM/M	E A ↑ G	SDCM3			
1006761	smartLED 2130	24 V DC INPUT	18 W/M	2700 K CRI>90	133 LED/M	1583 LM/M	E A ↑ G	SDCM3			
1006762	smartLED 2130	24 V DC INPUT	12 W/M	2700 K CRI>90	133 LED/M	1044 LM/M	E A ↑ G	SDCM3			
1006758	smartLED 2130	24 V DC INPUT	12 W/M	3000 K CRI>90	133 LED/M	1071 LM/M	E A ↑ G	SDCM3			
1006756	smartLED 2130	24 V DC INPUT	22 W/M	3000 K CRI>90	133 LED/M	2026 LM/M	E A ↑ G	SDCM3			
1006757	smartLED 2130	24 V DC INPUT	18 W/M	3000 K CRI>90	133 LED/M	1623 LM/M	E A ↑ G	SDCM3			
1006755	smartLED 2130	24 V DC INPUT	7 W/M	3000 K CRI>90	133 LED/M	669 LM/M	E A ↑ G	SDCM3			
1006753	smartLED 2130	24 V DC INPUT	18 W/M	4000 K CRI>90	133 LED/M	1699 LM/M	E A ↑ G	SDCM3			
1006754	smartLED 2130	24 V DC INPUT	12 W/M	4000 K CRI>90	133 LED/M	1121 LM/M	E A ↑ G	SDCM3			

## LED SYSTEMS

1.251 smartLED 2130

ART. NO.	DESIGNATION	CHARACTERISTICS						
1006751	smartLED 2130	24 V DC INPUT	7 W/M	4000 K CRI>90	133 LED/M	701 LM/M	 EAG	SDCM3
1006752	smartLED 2130	24 V DC INPUT	22 W/M	4000 K CRI>90	133 LED/M	2121 LM/M	 EAG	SDCM3

## Lighting design

**RELUX®**

click on the Relux icon to access our lighting design data directly

## Accessories



Art. No.  
1005886



Art. No.  
1006880



Art. No.  
1005713



Art. No.  
1005874



Art. No.  
1006313

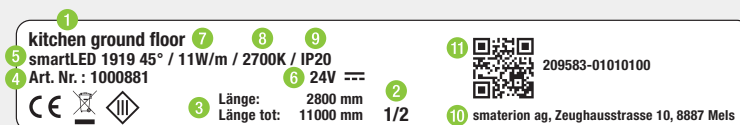


Art. No.  
1006314

ART. NO.	DESIGNATION
1005886	Mounting bracket
1006880	smartCONN connection connector straight
1005713	smartCONN connector to power supply 90°
1005874	smartCONN flat conductor through-wiring
1006313	smartCONN linear connector
1006314	smartCONN edge connector 90°
2002092	Transparent encapsulation, IP67

## Technical data

Storage temperature	-25 ... +50 °C
Max. surface temperature	65 °C
Shock rating	IK03
Protection type (IP)	IP20
Ambient temperature $t_a$	25 °C
Service life L80B10 (h) @ $t_a = 25^\circ\text{C}$	50000 h



- 1** Position, e.g. kitchen
- 2** Profile part for multi-part lengths, e.g.  $\frac{1}{3}$ ,  $\frac{2}{3}$ ,  $\frac{3}{3}$
- 3** Length profile
- 4** Item number
- 5** Profile type, e.g. smartLED 1216
- 6** Voltage, e.g. 24 V
- 7** Power, e.g. 23W/m
- 8** Color temperature, e.g. 3000K
- 9** IP protection, e.g. IP20
- 10** Manufacturer address
- 11** QR code with unique identification ID

## Electrical connection



1: V+  
2: V-



1: V+  
2: WW(-)  
3: CW(-)

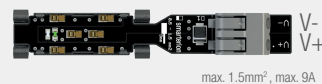


1: V+ 3: G(-)  
2: B(-) 4: R(-)



1: V+ 4: R(-)  
2: B(-) 5: W(-)  
3: G(-)

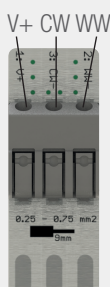
smartCONN System



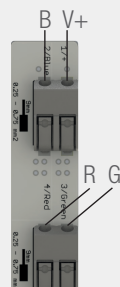
smartWIRE



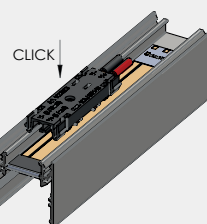
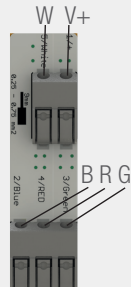
smartWIRE



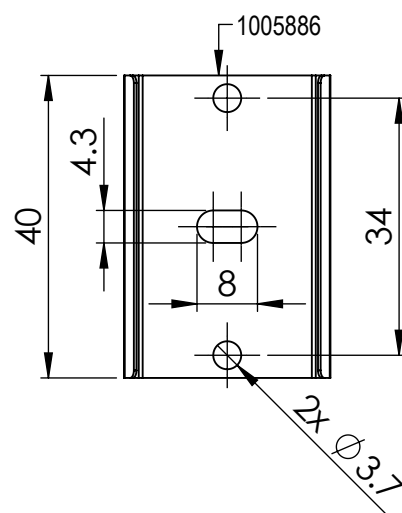
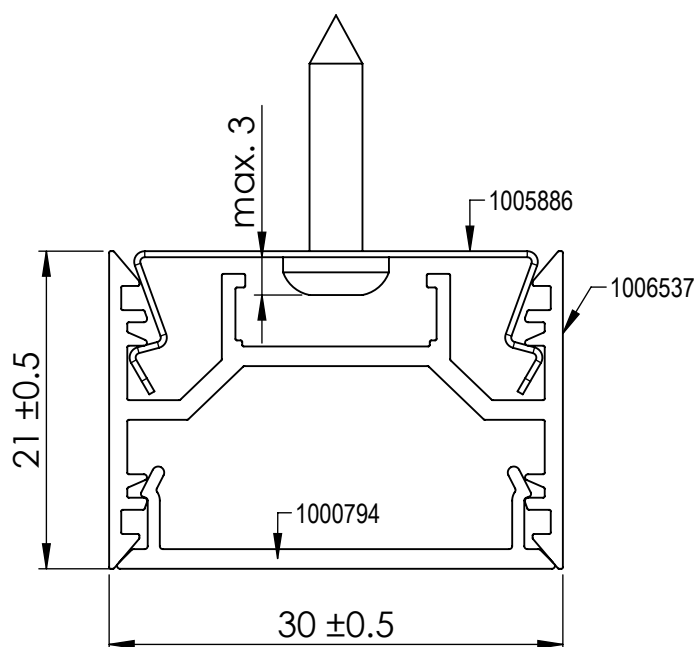
smartWIRE



smartWIRE



## Dimensions

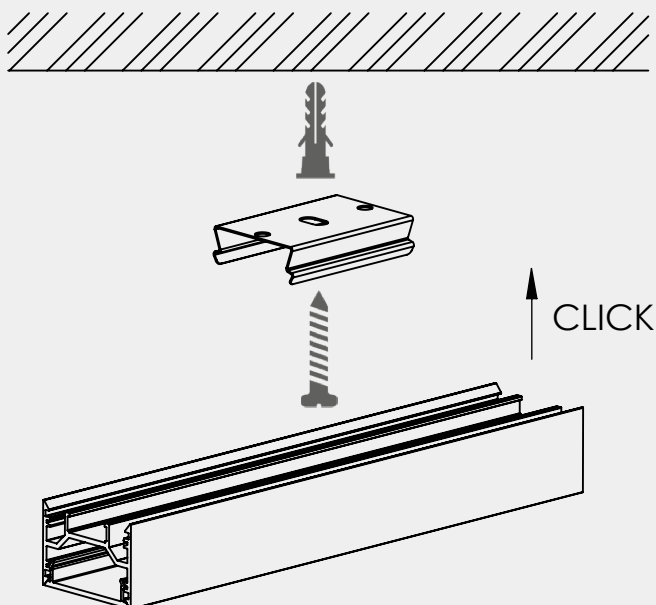


## Assembly instructions

Step 1



Step 2



When fitting the clamp, make sure that it can still be turned slightly, otherwise it can cause cracking noises due to thermal expansion.

## LED SYSTEMS

1.251 smartLED 2130

### Cleaning and care

Wipe the luminaire clean using a damp, lint-free cloth. Do not scrub! If heavily soiled, wipe clean with a mild solution of warm soapy water (microfibre cloth and washing-up liquid). Do not use a scouring agent. Do not rub the luminaire dry, as the resulting static may damage the electronic components beyond repair.

### Warnings

The equipment may only be installed and put into service by authorised technical personnel (electrical fitters). The luminaire is designed solely for lighting applications and is to be installed according to the installation regulations. Any other form of use or installation is considered to be improper. Failure to comply with the installation instructions can damage the luminaire beyond repair. Return to the manufacturer if any defects are identified. The installation instructions must be retained for future reference. Subject to technical changes. Not to be installed on a wet or conductive substrate. The luminaire is only to be installed, put into service or modified in any way by authorised skilled personnel (a qualified electrician). National installation regulations must be observed. Before any work is performed on the luminaire, it must be disconnected from mains. Hot plug-in is not an option and may cause damage to the luminaire! The manufacturer is not liable for damage resulting from improper/faulty installation or operation, or from unauthorised modifications to the luminaire. The light source contained in this luminaire is only to be replaced by the manufacturer, a service technician authorised by the manufacturer or a similarly qualified person. Caution, risk of electric shock! In the event of questions or queries, please contact the manufacturer.



Disconnect the luminaire from the power supply.



Caution, risk of electric shock!



#### DISPOSAL

The packaging must be recycled via the DSD (Green Dot) scheme or its equivalent. Dispose of the packaging correctly sorted. Waste electrical and electronic equipment must never be disposed of together with household waste. In accordance with the EU directives, the device must be disposed of in an orderly manner at the end of its service life. This means having the materials contained in the device recycled to avoid polluting the environment. Take the waste equipment to a collection point for electrical and electronic waste or to a recycling depot. For further information, please contact your local waste disposal service or your local authority.



The LED board(s) can only be replaced by smarterion as the manufacturer. Please do not attempt to replace the components yourself, as this will void the warranty and CE conformity.

## IP20

Protected against ingress of solid foreign objects with a diameter of more than 12.5 mm.



Class III luminaires for operation at safety extra-low voltage (SELV)