

DATA SHEET

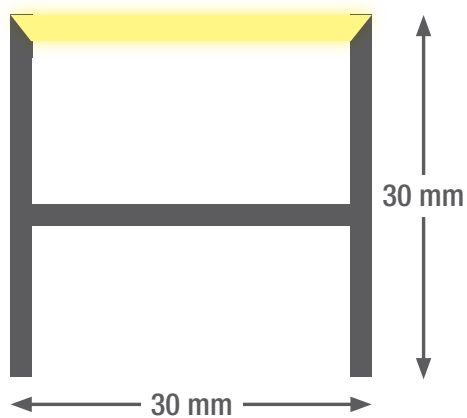
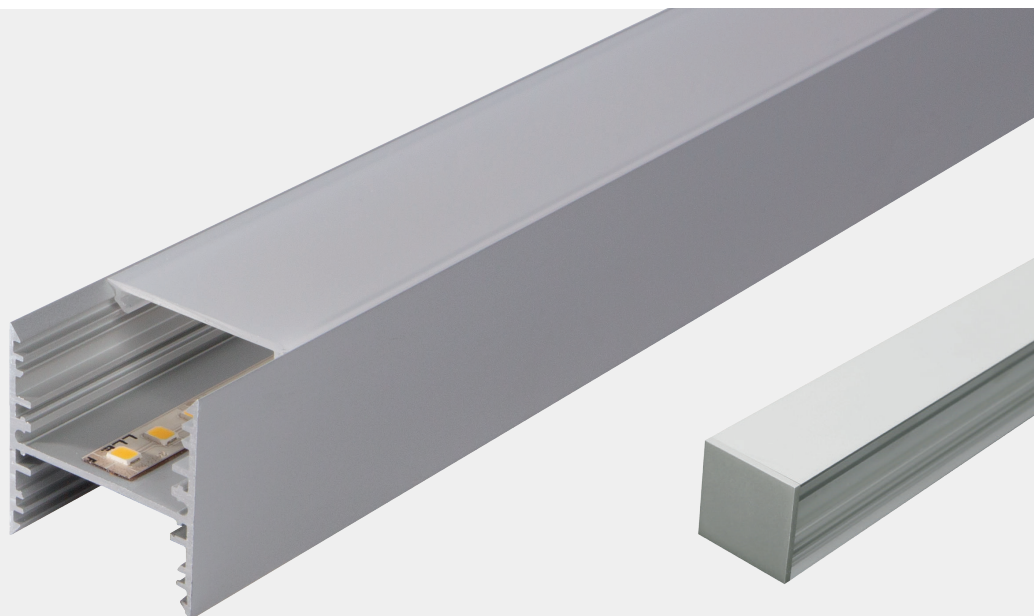
smartLED 3030 V2.0

An elegant high-quality LED light line made from anodised aluminium that meets the highest demands. Thanks to its variable length, the light line can be used as a single luminaire or as a strip light. As a result, fully uniform illumination is ensured from end to end. Very easy installation and concealed screws.

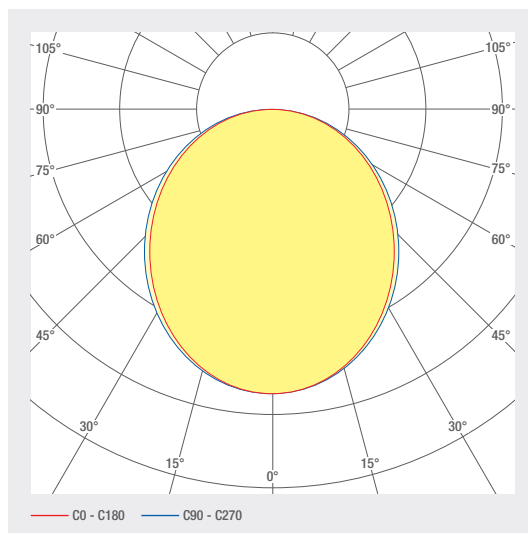
- Anodised aluminium channel
- Definable cable tap
- Cover made of opal PMMA for absolutely homogeneous illumination
- Die-cast aluminium end caps, painted in profile colour, no visible screws
- Service life: 50 000 h LM-80 > 50 000 h
- Light colors: 2700 K / 3000 K / 4000 K / 6500 K / TW / RGB(W)
- Control gear to be placed externally
- Halogen-free connection cable
- Optional: RAL or NCS powder coating
- Cable routing in the profile possible

LED SYSTEMS

1.250 smartLED 3030 V2.0



Profile length up to 5 m one-piece, greater than 5 m multi-piece



ART. NO.	DESIGNATION	CHARACTERISTICS									
1001381	smartLED 3030	24 V DC INPUT	25.8 W/M	DIFFUSED BEAM	RGB	120 LED/M					
1001420	smartLED 3030	24 V DC INPUT	19.2 W/M	DIFFUSED BEAM	RGBW 4000 K	98 LED/M					
1001392	smartLED 3030	24 V DC INPUT	19.2 W/M	DIFFUSED BEAM	RGBW 6000 K	98 LED/M					
1001393	smartLED 3030	24 V DC INPUT	19.2 W/M	DIFFUSED BEAM	RGBWW 3000 K	98 LED/M					
1002931	smartLED 3030	24 V DC INPUT	12 W/M	DIFFUSED BEAM	2700 K CRI>80	133 LED/M	1192 LM/M	DAG	SDCM3		
1002874	smartLED 3030	24 V DC INPUT	22 W/M	DIFFUSED BEAM	2700 K CRI>80	133 LED/M	2256 LM/M	DAG	SDCM3		
1006113	smartLED 3030	24 V DC INPUT	7 W/M	DIFFUSED BEAM	2700 K CRI>80	133 LED/M	745 LM/M	DAG	SDCM3		
1006114	smartLED 3030	24 V DC INPUT	18 W/M	DIFFUSED BEAM	2700 K CRI>80	133 LED/M	1807 LM/M	DAG	SDCM3		
1002875	smartLED 3030	24 V DC INPUT	22 W/M	DIFFUSED BEAM	3000 K CRI>80	133 LED/M	2338 LM/M	DAG	SDCM3		
1002932	smartLED 3030	24 V DC INPUT	12 W/M	DIFFUSED BEAM	3000 K CRI>80	133 LED/M	1235 LM/M	DAG	SDCM3		
1006116	smartLED 3030	24 V DC INPUT	18 W/M	DIFFUSED BEAM	3000 K CRI>80	133 LED/M	1873 LM/M	DAG	SDCM3		
1006115	smartLED 3030	24 V DC INPUT	7 W/M	DIFFUSED BEAM	3000 K CRI>80	133 LED/M	772 LM/M	DAG	SDCM3		
1002933	smartLED 3030	24 V DC INPUT	12 W/M	DIFFUSED BEAM	4000 K CRI>80	133 LED/M	1312 LM/M	DAG	SDCM3		
1002876	smartLED 3030	24 V DC INPUT	22 W/M	DIFFUSED BEAM	4000 K CRI>80	133 LED/M	2484 LM/M	DAG	SDCM3		
1006117	smartLED 3030	24 V DC INPUT	7 W/M	DIFFUSED BEAM	4000 K CRI>80	133 LED/M	820 LM/M	DAG	SDCM3		
1006118	smartLED 3030	24 V DC INPUT	18 W/M	DIFFUSED BEAM	4000 K CRI>80	133 LED/M	1989 LM/M	DAG	SDCM3		
1004629	smartLED 3030	24 V DC INPUT	18 W/M	DIFFUSED BEAM	2700 - 6500 K CRI>80	120 LED/M	EAG	SDCM3			
1000881	smartLED 3030	24 V DC INPUT	12 W/M	DIFFUSED BEAM	2700 K CRI>90	133 LED/M	1027 LM/M	EAG	SDCM3		
1000882	smartLED 3030	24 V DC INPUT	22 W/M	DIFFUSED BEAM	2700 K CRI>90	133 LED/M	1945 LM/M	EAG	SDCM3		
1006120	smartLED 3030	24 V DC INPUT	18 W/M	DIFFUSED BEAM	2700 K CRI>90	133 LED/M	1558 LM/M	EAG	SDCM3		
1006119	smartLED 3030	24 V DC INPUT	7 W/M	DIFFUSED BEAM	2700 K CRI>90	133 LED/M	642 LM/M	EAG	SDCM3		
1000884	smartLED 3030	24 V DC INPUT	22 W/M	DIFFUSED BEAM	3000 K CRI>90	133 LED/M	1994 LM/M	EAG	SDCM3		
1000883	smartLED 3030	24 V DC INPUT	12 W/M	DIFFUSED BEAM	3000 K CRI>90	133 LED/M	1054 LM/M	EAG	SDCM3		
1006122	smartLED 3030	24 V DC INPUT	18 W/M	DIFFUSED BEAM	3000 K CRI>90	133 LED/M	1597 LM/M	EAG	SDCM3		
1006121	smartLED 3030	24 V DC INPUT	7 W/M	DIFFUSED BEAM	3000 K CRI>90	133 LED/M	659 LM/M	EAG	SDCM3		
1000886	smartLED 3030	24 V DC INPUT	22 W/M	DIFFUSED BEAM	4000 K CRI>90	133 LED/M	2088 LM/M	EAG	SDCM3		
1000885	smartLED 3030	24 V DC INPUT	12 W/M	DIFFUSED BEAM	4000 K CRI>90	133 LED/M	1103 LM/M	EAG	SDCM3		

LED SYSTEMS

1.250 smartLED 3030 V2.0

ART. NO.	DESIGNATION	CHARACTERISTICS							
1006123	smartLED 3030	24 V DC INPUT	7 W/M	DIFFUSED BEAM	4000 K CRI>90	133 LED/M	690 LM/M	E A G	SDCM3
1006124	smartLED 3030	24 V DC INPUT	18 W/M	DIFFUSED BEAM	4000 K CRI>90	133 LED/M	1672 LM/M	E A G	SDCM3

Lighting design

RELUX®

click on the Relux icon to access our lighting design data directly

Accessories



Art. No.
1005886



Art. No.
1001220



Art. No.
1000989

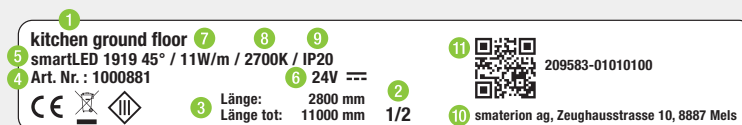


Art. No.
1001424

ART. NO.	DESIGNATION
1005886	Mounting bracket
1001220	Mounting bracket swivel
1000989	Floor profile 3030 V2.0 / U6030, anodised aluminium
1001424	Cord suspension 3m without cable outlet
1005015	Rope pendant 3 m with cable outlet
2002095	IP65 protective coating
2002092	Transparent encapsulation, IP67
1002371	Opal encapsulation, IP68

Technical data

Storage temperature	-25 ... +50 °C
Max. surface temperature	65 °C
Shock rating	IK03
Protection type (IP)	IP20
Ambient temperature t_a	25 °C
Service life L80B10 (h) @ $t_a = 25^\circ\text{C}$	50000 h



- 1 Position, e.g. kitchen
- 2 Profile part for multi-part lengths, e.g. $\frac{1}{3}$, $\frac{2}{3}$, $\frac{3}{3}$
- 3 Length profile
- 4 Item number
- 5 Profile type, e.g. smartLED 1216
- 6 Voltage, e.g. 24 V
- 7 Power, e.g. 23W/m
- 8 Color temperature, e.g. 3000K
- 9 IP protection, e.g. IP20
- 10 Manufacturer address
- 11 QR code with unique identification ID

Electrical connection



1: V+
2: V-



1: V+
2: WW(-)
3: CW(-)

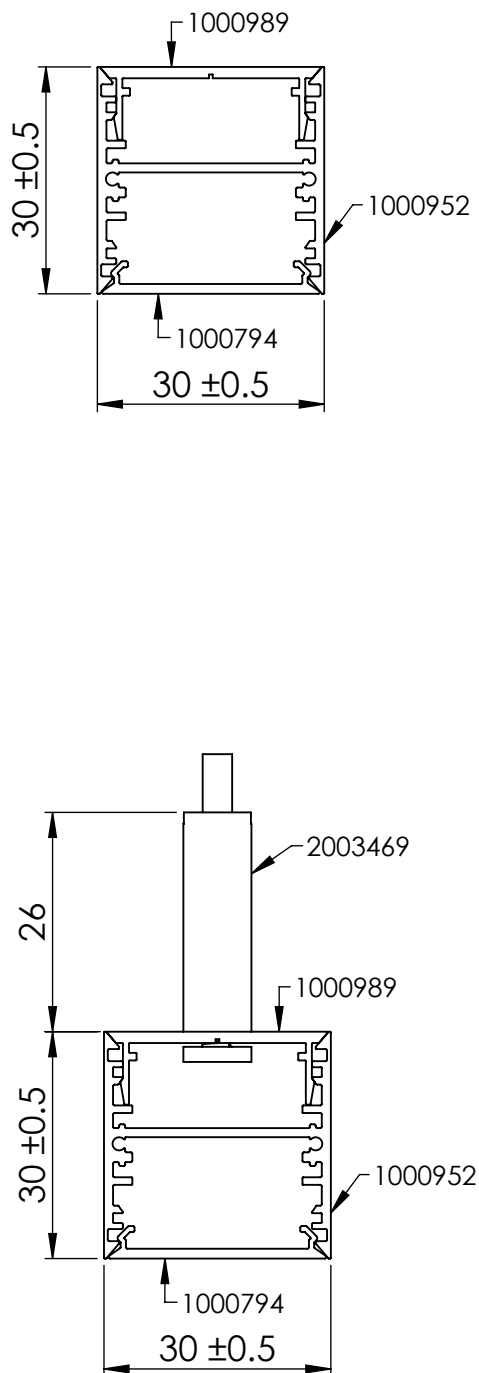
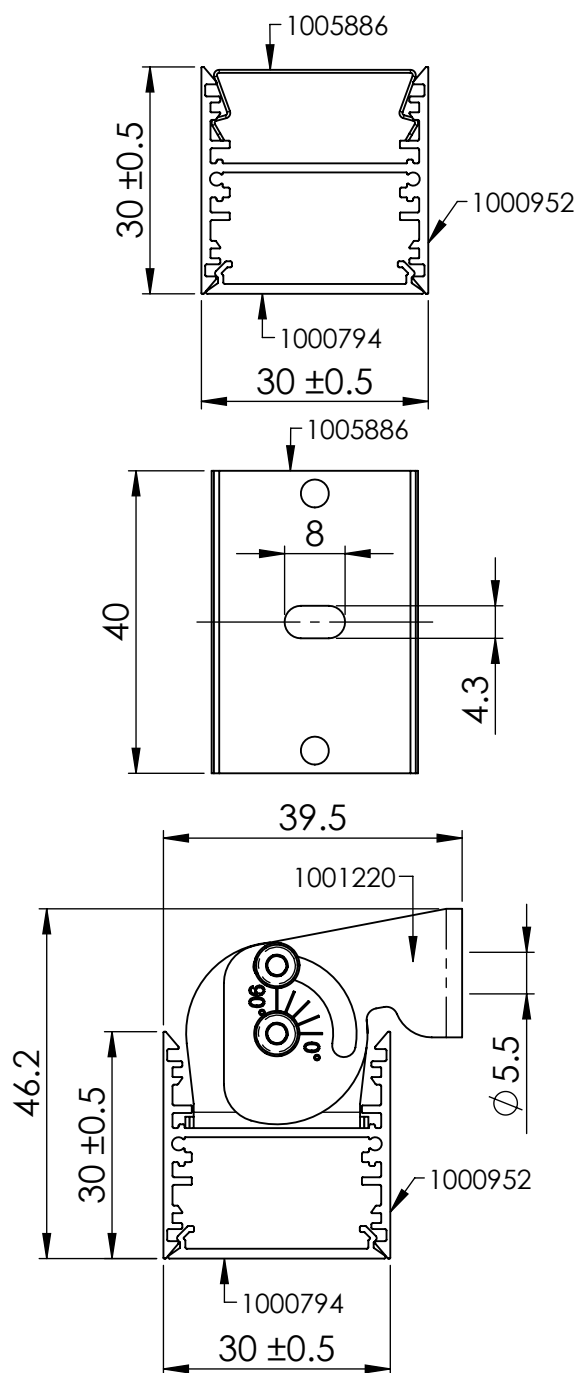


1: V+ 3: G(-)
2: B(-) 4: R(-)

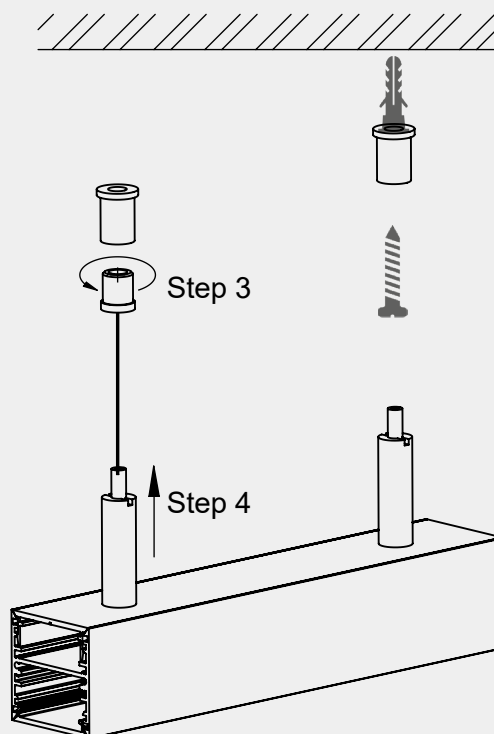
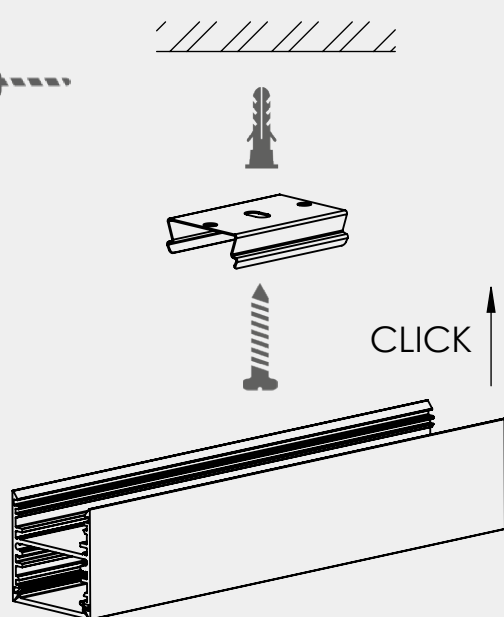


1: V+ 4: R(-)
2: B(-) 5: W(-)
3: G(-)

Dimensions



Assembly instructions

Step 1**Step 2**

If you are using brackets for installation, no countersunk head screws are permitted. If countersunk head screws are used, the bracket may become warped, thereby reducing its holding capacity.

Cleaning and care

Wipe the luminaire clean using a damp, lint-free cloth. Do not scrub! If heavily soiled, wipe clean with a mild solution of warm soapy water (microfibre cloth and washing-up liquid). Do not use a scouring agent. Do not rub the luminaire dry, as the resulting static may damage the electronic components beyond repair.

Warnings

The equipment may only be installed and put into service by authorised technical personnel (electrical fitters). The luminaire is designed solely for lighting applications and is to be installed according to the installation regulations. Any other form of use or installation is considered to be improper. Failure to comply with the installation instructions can damage the luminaire beyond repair. Return to the manufacturer if any defects are identified. The installation instructions must be retained for future reference. Subject to technical changes. Not to be installed on a wet or conductive substrate. The luminaire is only to be installed, put into service or modified in any way by authorised skilled personnel (a qualified electrician). National installation regulations must be observed. Before any work is performed on the luminaire, it must be disconnected from mains. Hot plug-in is not an option and may cause damage to the luminaire! The manufacturer is not liable for damage resulting from improper/faulty installation or operation, or from unauthorised modifications to the luminaire. The light source contained in this luminaire is only to be replaced by the manufacturer, a service technician authorised by the manufacturer or a similarly qualified person. Caution, risk of electric shock! In the event of questions or queries, please contact the manufacturer.



Disconnect the luminaire from the power supply.



Caution, risk of electric shock!



DISPOSAL

The packaging must be recycled via the DSD (Green Dot) scheme or its equivalent. Dispose of the packaging correctly sorted. Waste electrical and electronic equipment must never be disposed of together with household waste. In accordance with the EU directives, the device must be disposed of in an orderly manner at the end of its service life. This means having the materials contained in the device recycled to avoid polluting the environment. Take the waste equipment to a collection point for electrical and electronic waste or to a recycling depot. For further information, please contact your local waste disposal service or your local authority.



The LED board(s) can only be replaced by smarтерion as the manufacturer. Please do not attempt to replace the components yourself, as this will void the warranty and CE conformity.

IP20

Protected against ingress of solid foreign objects with a diameter of more than 12.5 mm.



Class III luminaires for operation at safety extra-low voltage (SELV)