

DATA SHEET

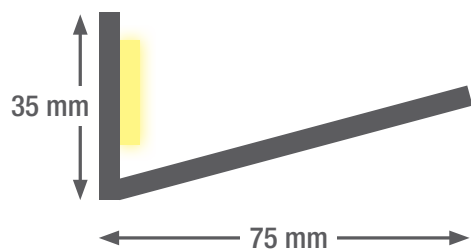
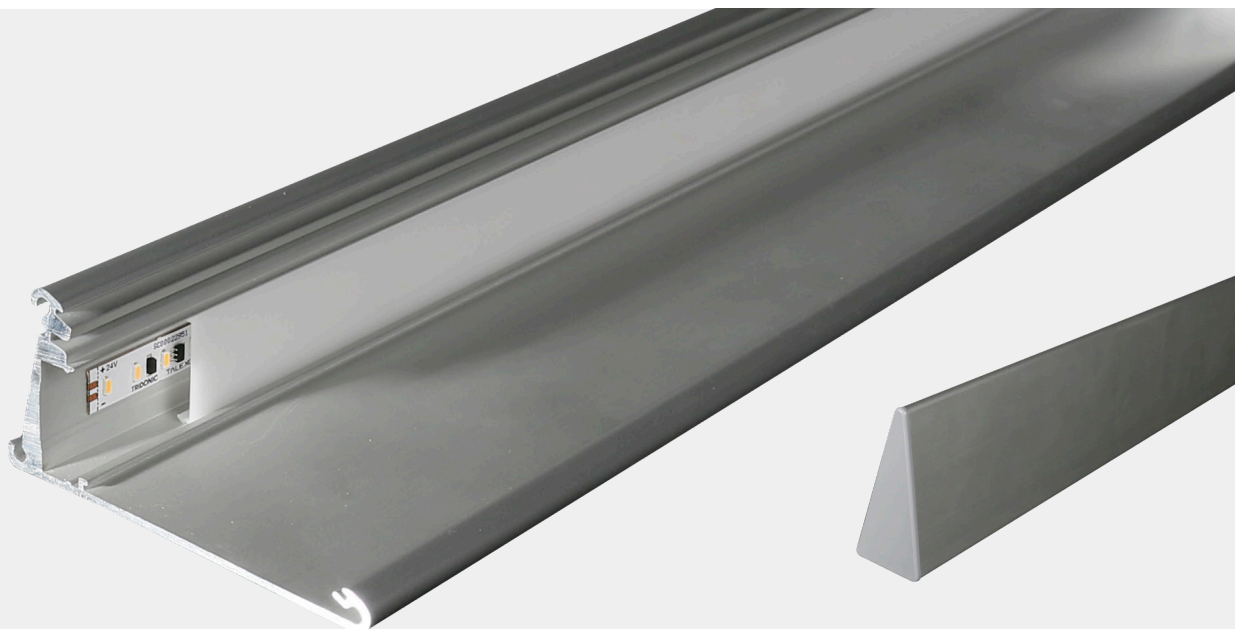
smartLED 3575

An elegant, high-quality LED light line made from anodised aluminium that meets the highest demands. Thanks to its variable length, the light line can be used as a single luminaire or as a strip light. As a result, uniform illumination is ensured from end to end. The mounting brackets are concealed. This LED light line is particularly suitable for indirect ceiling lighting and creates a unique ambience in the room.

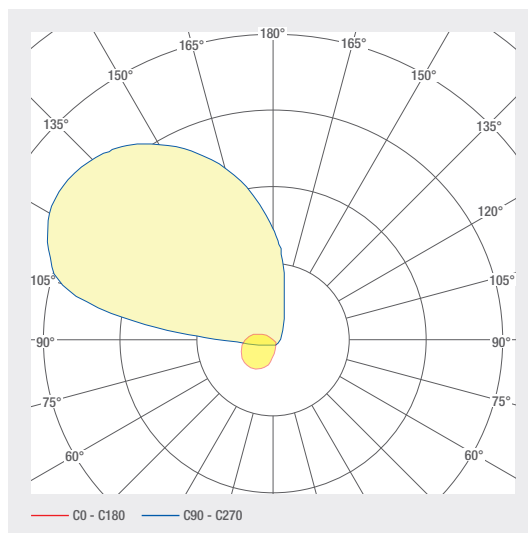
- Anodised aluminium channel
- Definable cable tap
- Optic 30° / Opal PC available
- Die-cast aluminium end caps, painted in profile colour, no visible screws
- Service life: 50 000 h LM-80 > 50 000 h
- Light colors: 2700 K / 3000 K / 4000 K / 6500 K / TW / RGB(W)
- Control gear to be placed externally
- Halogen-free connection cable
- Optional: RAL or NCS powder coating
- Asymmetric distribution

LED SYSTEMS

1.230 smartLED 3575



Profile length up to 5 m one-piece, greater than 5 m multi-piece



ART. NO.	DESIGNATION	CHARACTERISTICS									
1002552	smartLED 3575	24 V DC INPUT	25.8 W/M	 RGB	120 LED/M						
1002553	smartLED 3575	24 V DC INPUT	19.2 W/M	 RGBW 6500 K	98 LED/M						
1002554	smartLED 3575	24 V DC INPUT	19.2 W/M	 RGBW 8000 K	98 LED/M						
1002555	smartLED 3575	24 V DC INPUT	19.2 W/M	 RGBW 3000 K	98 LED/M						
1002549	smartLED 3575	24 V DC INPUT	22 W/M	2700 K CRI>80	133 LED/M	2001 LM/M	 D	A ↑ G	SDCM3		
1003025	smartLED 3575	24 V DC INPUT	12 W/M	2700 K CRI>80	133 LED/M	1057 LM/M	 D	A ↑ G	SDCM3		
1003026	smartLED 3575	24 V DC INPUT	12 W/M	3000 K CRI>80	133 LED/M	1096 LM/M	 D	A ↑ G	SDCM3		
1002550	smartLED 3575	24 V DC INPUT	22 W/M	3000 K CRI>80	133 LED/M	2074 LM/M	 D	A ↑ G	SDCM3		
1003027	smartLED 3575	24 V DC INPUT	12 W/M	4000 K CRI>80	133 LED/M	1164 LM/M	 D	A ↑ G	SDCM3		
1002551	smartLED 3575	24 V DC INPUT	22 W/M	4000 K CRI>80	133 LED/M	2203 LM/M	 D	A ↑ G	SDCM3		
1004628	smartLED 3575	24 V DC INPUT	18 W/M	2700 - 6500 K CRI>80	120 LED/M	1265 LM/M	 E	A ↑ G	SDCM3		
1002557	smartLED 3575	24 V DC INPUT	22 W/M	2700 K CRI>90	133 LED/M	1725 LM/M	 E	A ↑ G	SDCM3		
1002556	smartLED 3575	24 V DC INPUT	12 W/M	2700 K CRI>90	133 LED/M	911 LM/M	 E	A ↑ G	SDCM3		
1002558	smartLED 3575	24 V DC INPUT	12 W/M	3000 K CRI>90	133 LED/M	935 LM/M	 E	A ↑ G	SDCM3		
1002559	smartLED 3575	24 V DC INPUT	22 W/M	3000 K CRI>90	133 LED/M	1769 LM/M	 E	A ↑ G	SDCM3		
1002561	smartLED 3575	24 V DC INPUT	22 W/M	4000 K CRI>90	133 LED/M	1852 LM/M	 E	A ↑ G	SDCM3		
1002560	smartLED 3575	24 V DC INPUT	12 W/M	4000 K CRI>90	133 LED/M	979 LM/M	 E	A ↑ G	SDCM3		

Lighting design

RELUX®

click on the Relux icon to access our lighting design data directly

Accessories







Art. No.
1004592

ART. NO.	DESIGNATION
1004592	Wall holder incl. fastening screws
2002095	IP65 protective coating
2002091	Transparent encapsulation, IP67

Technical data

Storage temperature	-25 ... +50 °C
Max. surface temperature	65 °C
Shock rating	IK03
Protection type (IP)	IP20
Ambient temperature t_a	25 °C
Service life L80B10 (h) @ $t_a = 25^\circ\text{C}$	50000 h

1 kitchen ground floor **7** smartLED 1919 45° / 11W/m / 2700K / IP20 **8** 24V **9** Art. Nr. : 1000881 **11**  209583-01010100
4    **3** Länge: 2800 mm **6** 24V **2** Länge tot: 11000 mm **1/2** **10** smaterion ag, Zeughausstrasse 10, 8887 Mels

- 1** Position, e.g. kitchen
- 2** Profile part for multi-part lengths, e.g. $\frac{1}{3}$, $\frac{2}{3}$, $\frac{3}{3}$
- 3** Length profile
- 4** Item number
- 5** Profile type, e.g. smartLED 1216
- 6** Voltage, e.g. 24 V
- 7** Power, e.g. 23W/m
- 8** Color temperature, e.g. 3000K
- 9** IP protection, e.g. IP20
- 10** Manufacturer address
- 11** QR code with unique identification ID

Electrical connection



1: V+
2: V-



1: V+
2: WW(-)
3: CW(-)

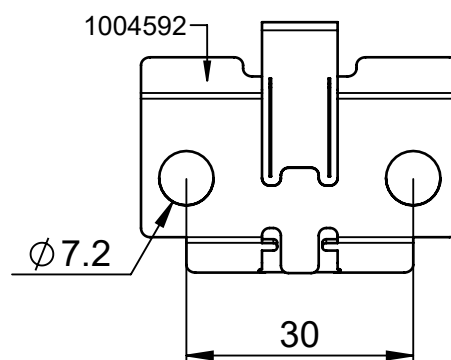
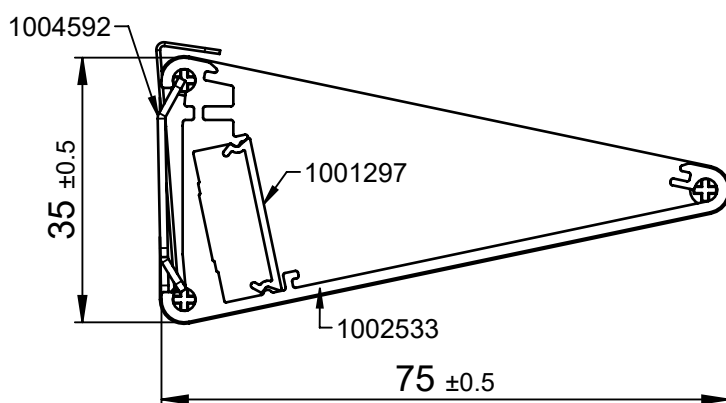


1: V+ 3: G(-)
2: B(-) 4: R(-)

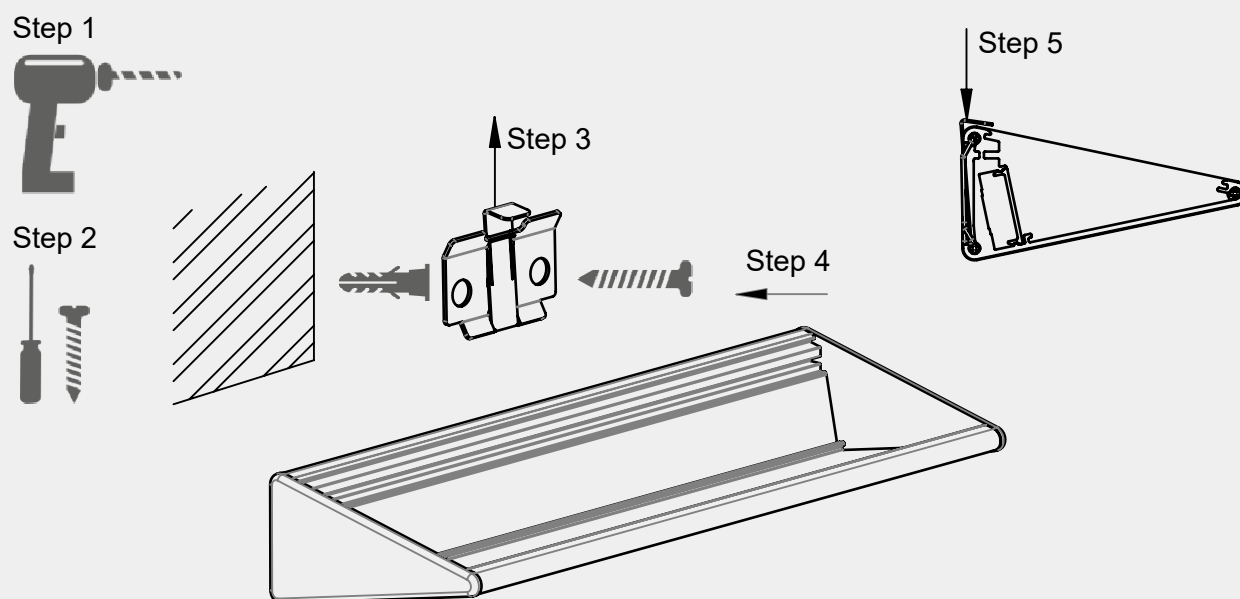


1: V+ 4: R(-)
2: B(-) 5: W(-)
3: G(-)

Dimensions



Assembly instructions



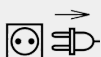
After installation, it is essential to push down the holder lock; otherwise, there is a risk of the profile falling out of the holder!

Cleaning and care

Wipe the luminaire clean using a damp, lint-free cloth. Do not scrub! If heavily soiled, wipe clean with a mild solution of warm soapy water (microfibre cloth and washing-up liquid). Do not use a scouring agent. Do not rub the luminaire dry, as the resulting static may damage the electronic components beyond repair.

Warnings

The equipment may only be installed and put into service by authorised technical personnel (electrical fitters). The luminaire is designed solely for lighting applications and is to be installed according to the installation regulations. Any other form of use or installation is considered to be improper. Failure to comply with the installation instructions can damage the luminaire beyond repair. Return to the manufacturer if any defects are identified. The installation instructions must be retained for future reference. Subject to technical changes. Not to be installed on a wet or conductive substrate. The luminaire is only to be installed, put into service or modified in any way by authorised skilled personnel (a qualified electrician). National installation regulations must be observed. Before any work is performed on the luminaire, it must be disconnected from mains. Hot plug-in is not an option and may cause damage to the luminaire! The manufacturer is not liable for damage resulting from improper/faulty installation or operation, or from unauthorised modifications to the luminaire. The light source contained in this luminaire is only to be replaced by the manufacturer, a service technician authorised by the manufacturer or a similarly qualified person. Caution, risk of electric shock! In the event of questions or queries, please contact the manufacturer.



Disconnect the luminaire from the power supply.



Caution, risk of electric shock!



DISPOSAL

The packaging must be recycled via the DSD (Green Dot) scheme or its equivalent. Dispose of the packaging correctly sorted. Waste electrical and electronic equipment must never be disposed of together with household waste. In accordance with the EU directives, the device must be disposed of in an orderly manner at the end of its service life. This means having the materials contained in the device recycled to avoid polluting the environment. Take the waste equipment to a collection point for electrical and electronic waste or to a recycling depot. For further information, please contact your local waste disposal service or your local authority.



The LED board(s) can only be replaced by smarтерion as the manufacturer. Please do not attempt to replace the components yourself, as this will void the warranty and CE conformity.

IP20

Protected against ingress of solid foreign objects with a diameter of more than 12.5 mm.



Class III luminaires for operation at safety extra-low voltage (SELV)