



## DATA SHEET

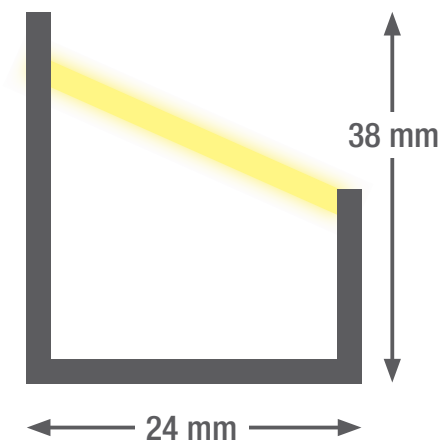
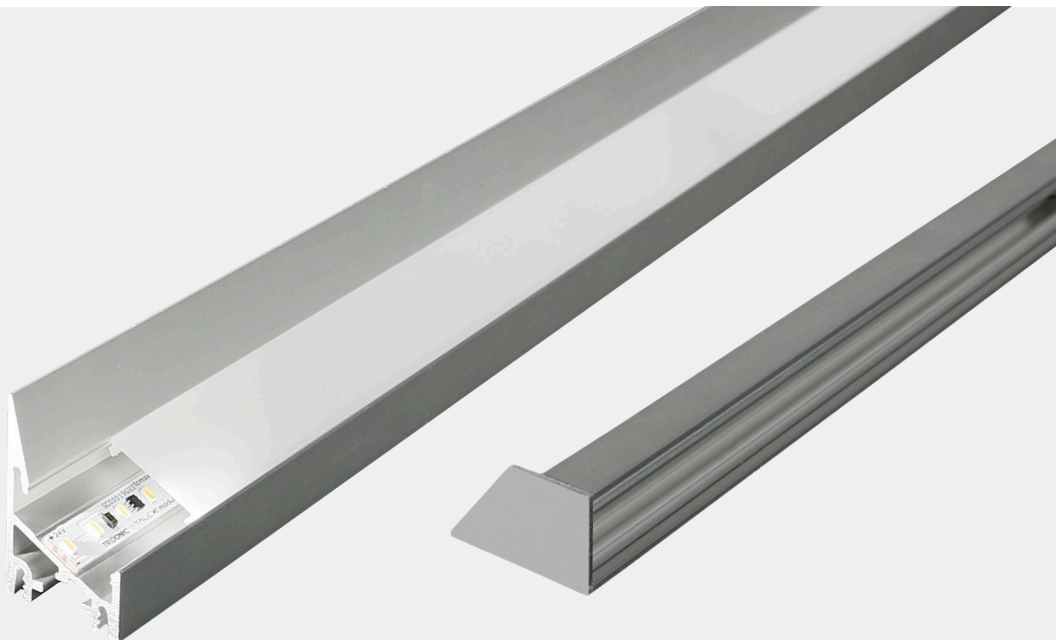
# smartLED 3824

An elegant, high-quality LED light line made from anodised aluminium that meets the highest demands. Thanks to its variable length, the light line can be used as a single luminaire or as a strip light. As a result, uniform illumination is ensured from end to end. The LED line is absolutely ideal for cove lighting applications. The mounting brackets are concealed. This LED light line is absolutely ideal for wall lighting situations where people should not be able to see into the diffuser.

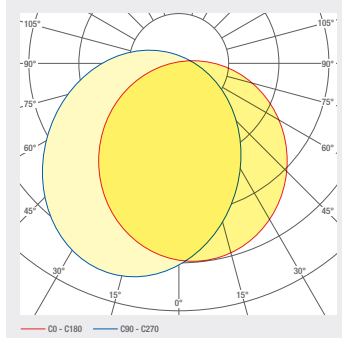
- Anodised aluminium channel
- Definable cable tap
- Optic 30° / Opal PC available
- Die-cast aluminium end caps, painted in profile colour, no visible screws
- Service life: 50 000 h LM-80 > 50 000 h
- Light colors: 2700 K / 3000 K / 4000 K / 6500 K / TW / RGB(W)
- Control gear to be placed externally
- Halogen-free connection cable
- Optional: RAL or NCS powder coating
- Asymmetric distribution

## LED SYSTEMS

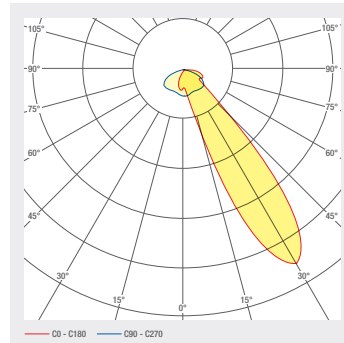
# 1.220 smartLED 3824



Abdeckung diffus



Abdeckung 30°



Profile length up to 5 m one-piece, greater than 5 m multi-piece

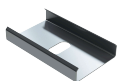
ART. NO.	DESIGNATION	CHARACTERISTICS									
1002391	smartLED 3824	24 V DC INPUT	25.8 W/M	 RGB	120 LED/M						
1002389	smartLED 3824	24 V DC INPUT	19.2 W/M	 RGBW 6500 K	98 LED/M						
1002390	smartLED 3824	24 V DC INPUT	19.2 W/M	 RGBW 8000 K	98 LED/M						
1002388	smartLED 3824	24 V DC INPUT	19.2 W/M	 RGBW 3000 K	98 LED/M						
1002413	smartLED 3824	24 V DC INPUT	22 W/M	2700 K CRI>80	133 LED/M	2401 LM/M	 D	A ↑ G	SDCM3		
1002830	smartLED 3824	24 V DC INPUT	12 W/M	2700 K CRI>80	133 LED/M	1269 LM/M	 D	A ↑ G	SDCM3		
1002399	smartLED 3824	24 V DC INPUT	22 W/M	3000 K CRI>80	133 LED/M	2488 LM/M	 D	A ↑ G	SDCM3		
1002829	smartLED 3824	24 V DC INPUT	12 W/M	3000 K CRI>80	133 LED/M	1315 LM/M	 D	A ↑ G	SDCM3		
1002828	smartLED 3824	24 V DC INPUT	12 W/M	4000 K CRI>80	133 LED/M	1397 LM/M	 D	A ↑ G	SDCM3		
1002398	smartLED 3824	24 V DC INPUT	22 W/M	4000 K CRI>80	133 LED/M	2644 LM/M	 D	A ↑ G	SDCM3		
1004627	smartLED 3824	24 V DC INPUT	18 W/M	2700 - 6500 K CRI>80	120 LED/M	1518 LM/M	 E	A ↑ G	SDCM3		
1002392	smartLED 3824	24 V DC INPUT	12 W/M	2700 K CRI>90	133 LED/M	1094 LM/M	 E	A ↑ G	SDCM3		
1002395	smartLED 3824	24 V DC INPUT	22 W/M	2700 K CRI>90	133 LED/M	2071 LM/M	 E	A ↑ G	SDCM3		
1002396	smartLED 3824	24 V DC INPUT	22 W/M	3000 K CRI>90	133 LED/M	2123 LM/M	 E	A ↑ G	SDCM3		
1002393	smartLED 3824	24 V DC INPUT	12 W/M	3000 K CRI>90	133 LED/M	1122 LM/M	 E	A ↑ G	SDCM3		
1002397	smartLED 3824	24 V DC INPUT	22 W/M	4000 K CRI>90	133 LED/M	2222 LM/M	 E	A ↑ G	SDCM3		
1002394	smartLED 3824	24 V DC INPUT	12 W/M	4000 K CRI>90	133 LED/M	1174 LM/M	 E	A ↑ G	SDCM3		

## Lighting design

**RELUX®**

click on the Relux icon to access our lighting design data directly

## Accessories



Art. No.  
3100020



Art. No.  
1002532

ART. NO.	DESIGNATION
3100020	
1002532	Wall-mounting kit for smartLED 3824
2002095	IP65 protective coating
1002730	Opal encapsulation, IP68

## Technical data

Storage temperature	-25 ... +50 °C
Max. surface temperature	65 °C
Shock rating	IK03
Protection type (IP)	IP20
Ambient temperature $t_a$	25 °C
Service life L80B10 (h) @ $t_a = 25^\circ\text{C}$	50000 h

1

5

4

**kitchen ground floor**  
**smartLED 1919 45° / 11W/m / 2700K / IP20**  
**Art. Nr. : 1000881**

3

Länge: 2800 mm  
Länge tot: 11000 mm

6

24V

2

1/2

7

8

9

11

209583-01010100

10

smaterion ag, Zeughausstrasse 10, 8887 Mels

- |   |  |
|---|--|
| 1 Position, e.g. kitchen  | 7 Power, e.g. 23W/m                      |
| 2 Profile part for multi-part lengths, e.g. $\frac{1}{3}$ , $\frac{2}{3}$ , $\frac{3}{3}$ | 8 Color temperature, e.g. 3000K          |
| 3 Length profile  | 9 IP protection, e.g. IP20               |
| 4 Item number   | 10 Manufacturer address                  |
| 5 Profile type, e.g. smartLED 1216  | 11 QR code with unique identification ID |
| 6 Voltage, e.g. 24 V  |  |

## Electrical connection



1: V+  
2: V-



1: V+  
2: WW(-)  
3: CW(-)

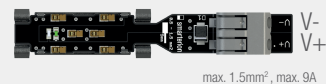


1: V+ 3: G(-)  
2: B(-) 4: R(-)



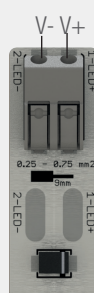
1: V+ 4: R(-)  
2: B(-) 5: W(-)  
3: G(-)

smartCONN System



max. 1.5mm<sup>2</sup>, max. 9A

smartWIRE



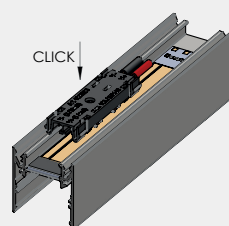
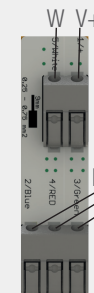
smartWIRE



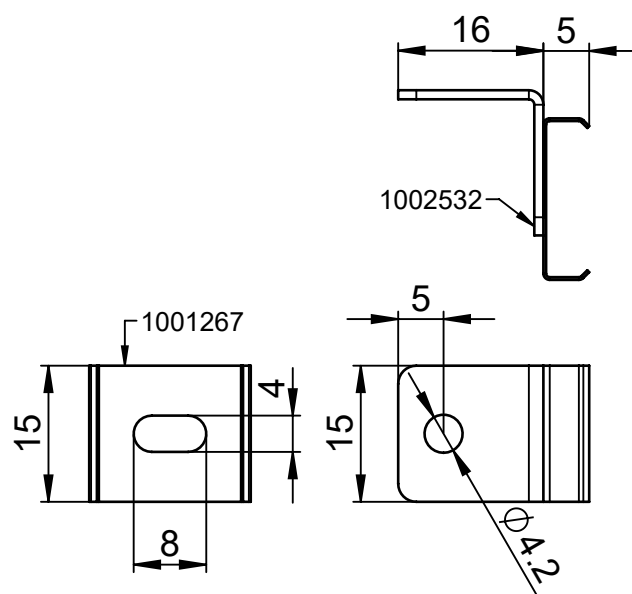
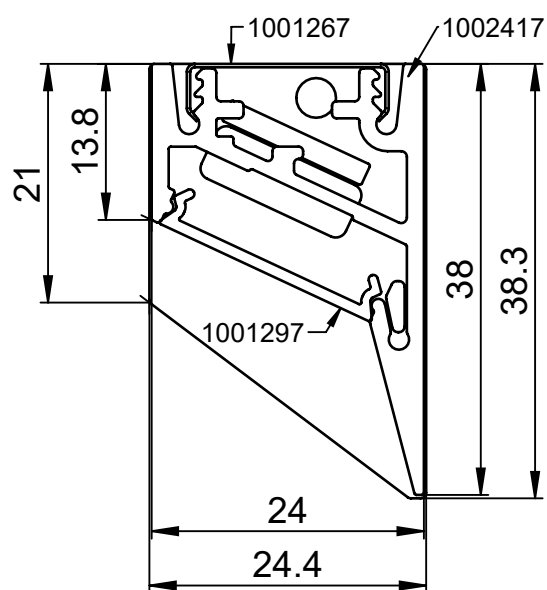
smartWIRE



smartWIRE



## Dimensions

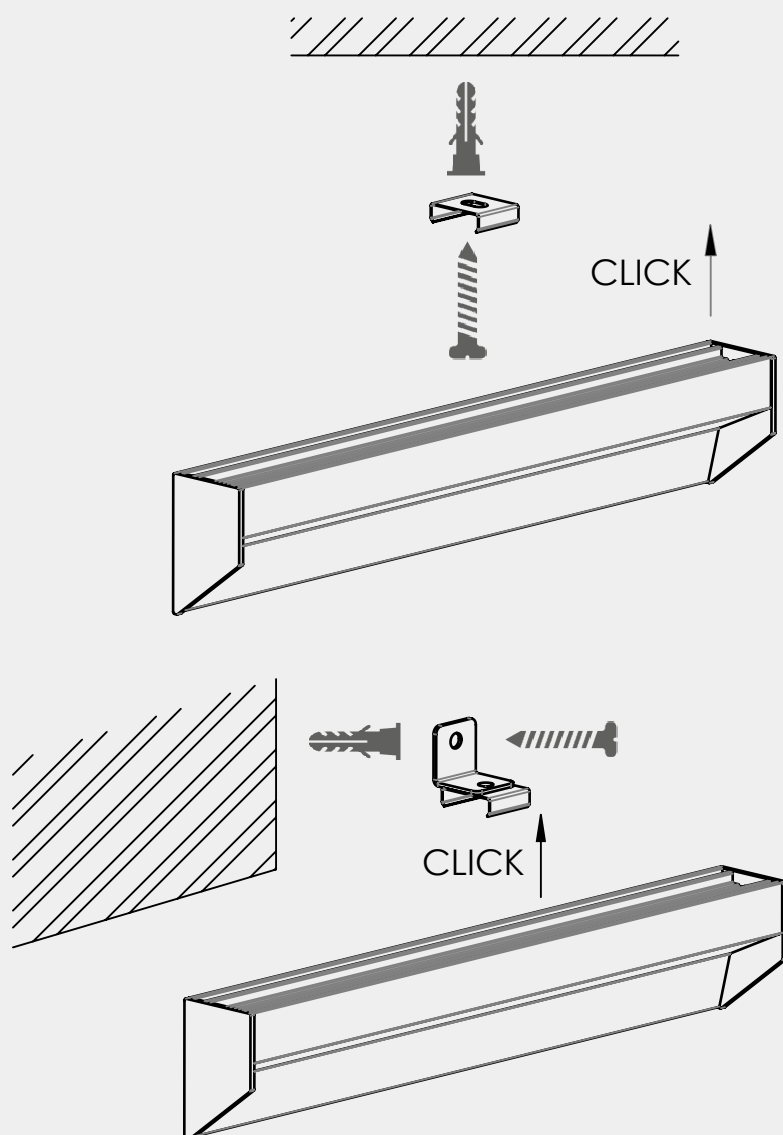


## Assembly instructions

Step 1



Step 2



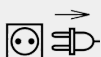
When fitting the clamp, make sure that it can still be turned slightly, otherwise it can cause cracking noises due to thermal expansion.

### Cleaning and care

Wipe the luminaire clean using a damp, lint-free cloth. Do not scrub! If heavily soiled, wipe clean with a mild solution of warm soapy water (microfibre cloth and washing-up liquid). Do not use a scouring agent. Do not rub the luminaire dry, as the resulting static may damage the electronic components beyond repair.

### Warnings

The equipment may only be installed and put into service by authorised technical personnel (electrical fitters). The luminaire is designed solely for lighting applications and is to be installed according to the installation regulations. Any other form of use or installation is considered to be improper. Failure to comply with the installation instructions can damage the luminaire beyond repair. Return to the manufacturer if any defects are identified. The installation instructions must be retained for future reference. Subject to technical changes. Not to be installed on a wet or conductive substrate. The luminaire is only to be installed, put into service or modified in any way by authorised skilled personnel (a qualified electrician). National installation regulations must be observed. Before any work is performed on the luminaire, it must be disconnected from mains. Hot plug-in is not an option and may cause damage to the luminaire! The manufacturer is not liable for damage resulting from improper/faulty installation or operation, or from unauthorised modifications to the luminaire. The light source contained in this luminaire is only to be replaced by the manufacturer, a service technician authorised by the manufacturer or a similarly qualified person. Caution, risk of electric shock! In the event of questions or queries, please contact the manufacturer.



Disconnect the luminaire from the power supply.



Caution, risk of electric shock!



#### DISPOSAL

The packaging must be recycled via the DSD (Green Dot) scheme or its equivalent. Dispose of the packaging correctly sorted. Waste electrical and electronic equipment must never be disposed of together with household waste. In accordance with the EU directives, the device must be disposed of in an orderly manner at the end of its service life. This means having the materials contained in the device recycled to avoid polluting the environment. Take the waste equipment to a collection point for electrical and electronic waste or to a recycling depot. For further information, please contact your local waste disposal service or your local authority.



The LED board(s) can only be replaced by smarтерion as the manufacturer. Please do not attempt to replace the components yourself, as this will void the warranty and CE conformity.

## IP20

Protected against ingress of solid foreign objects with a diameter of more than 12.5 mm.



Class III luminaires for operation at safety extra-low voltage (SELV)