

DATA SHEET

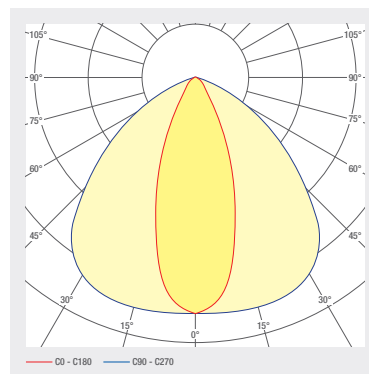
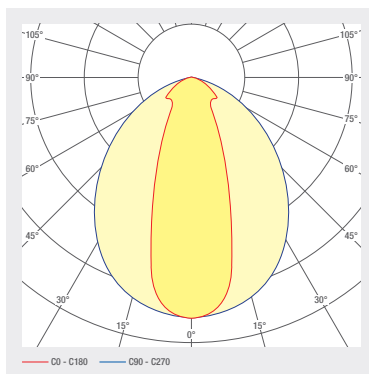
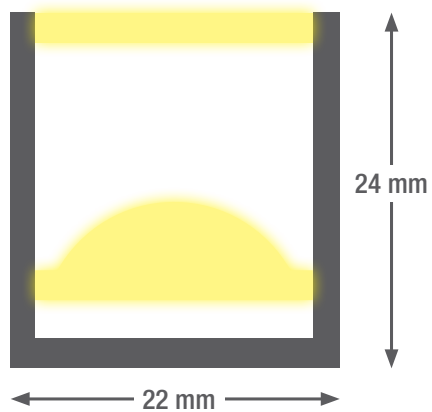
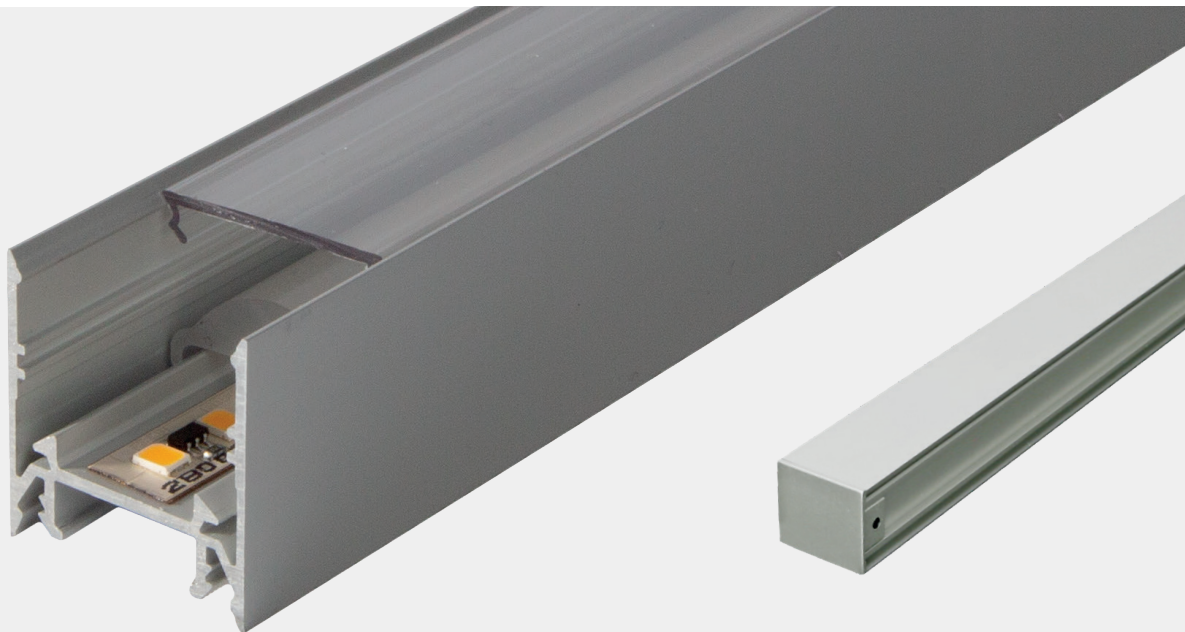
smartLED L2422

An elegant, high-quality LED light line made from anodised aluminium that meets the highest demands. Thanks to its variable length, the light line can be used as a single luminaire or as a strip light. As a result, uniform illumination is ensured from end to end. The mounting brackets are concealed and are even height-adjustable to compensate for uneven ceilings. Various different lenses can be used.

- Anodised aluminium channel
- Definable cable tap
- Optic 15° / 30° available
- Opal PC cover for completely uniform illumination
- Die-cast aluminium end caps, painted in profile colour, no visible screws
- Service life: 50 000 h LM-80 > 50 000 h
- Light colors: 2700 K / 3000 K / 4000 K / 6500 K / TW / RGB(W)
- Control gear to be placed externally
- Halogen-free connection cable
- Optional: RAL or NCS powder coating
- Concealed mounting brackets

LED SYSTEMS

1.190 smartLED L2422





Profile length up to 5 m one-piece, greater than 5 m multi-piece

ART. NO.	DESIGNATION	CHARACTERISTICS									
1004661	smartLED L2422	24 V DC INPUT	25.8 W/M	RGB	120 LED/M						
1004662	smartLED L2422	24 V DC INPUT	19.2 W/M	RGBW 6500 K	98 LED/M						
1004663	smartLED L2422	24 V DC INPUT	19.2 W/M	RGBW 8000 K	98 LED/M						
1004664	smartLED L2422	24 V DC INPUT	19.2 W/M	RGBWW 3000 K	98 LED/M						
1004653	smartLED L2422	24 V DC INPUT	12 W/M	2700 K CRI>80	133 LED/M	1326 LM/M	D A ↑ G	SDCM3			
1005849	smartLED L2422	24 V DC INPUT	18 W/M	2700 K CRI>80	133 LED/M	2011 LM/M	D A ↑ G	SDCM3			
1005848	smartLED L2422	24 V DC INPUT	7 W/M	2700 K CRI>80	133 LED/M	829 LM/M	D A ↑ G	SDCM3			
1004655	smartLED L2422	24 V DC INPUT	22 W/M	2700 K CRI>80	133 LED/M	2510 LM/M	D A ↑ G	SDCM3			
1004656	smartLED L2422	24 V DC INPUT	12 W/M	3000 K CRI>80	133 LED/M	1375 LM/M	D A ↑ G	SDCM3			
1004657	smartLED L2422	24 V DC INPUT	22 W/M	3000 K CRI>80	133 LED/M	2601 LM/M	D A ↑ G	SDCM3			
1005850	smartLED L2422	24 V DC INPUT	7 W/M	3000 K CRI>80	133 LED/M	859 LM/M	D A ↑ G	SDCM3			
1005851	smartLED L2422	24 V DC INPUT	18 W/M	3000 K CRI>80	133 LED/M	2084 LM/M	D A ↑ G	SDCM3			
1004659	smartLED L2422	24 V DC INPUT	22 W/M	4000 K CRI>80	133 LED/M	2764 LM/M	D A ↑ G	SDCM3			
1005852	smartLED L2422	24 V DC INPUT	7 W/M	4000 K CRI>80	133 LED/M	913 LM/M	D A ↑ G	SDCM3			
1004658	smartLED L2422	24 V DC INPUT	12 W/M	4000 K CRI>80	133 LED/M	1460 LM/M	D A ↑ G	SDCM3			
1005853	smartLED L2422	24 V DC INPUT	18 W/M	4000 K CRI>80	133 LED/M	2214 LM/M	D A ↑ G	SDCM3			
1006437	smartLED L2422	24 V DC INPUT	18 W/M	2700 - 6500 K CRI>80	120 LED/M	1587 LM/M	E A ↑ G	SDCM3			
1004665	smartLED L2422	24 V DC INPUT	12 W/M	2700 K CRI>90	133 LED/M	1144 LM/M	E A ↑ G	SDCM3			
1004666	smartLED L2422	24 V DC INPUT	22 W/M	2700 K CRI>90	133 LED/M	2165 LM/M	E A ↑ G	SDCM3			
1005854	smartLED L2422	24 V DC INPUT	7 W/M	2700 K CRI>90	133 LED/M	715 LM/M	E A ↑ G	SDCM3			
1005855	smartLED L2422	24 V DC INPUT	18 W/M	2700 K CRI>90	133 LED/M	1734 LM/M	E A ↑ G	SDCM3			
1004667	smartLED L2422	24 V DC INPUT	12 W/M	3000 K CRI>90	133 LED/M	1173 LM/M	E A ↑ G	SDCM3			
1005857	smartLED L2422	24 V DC INPUT	18 W/M	3000 K CRI>90	133 LED/M	1778 LM/M	E A ↑ G	SDCM3			
1004668	smartLED L2422	24 V DC INPUT	22 W/M	3000 K CRI>90	133 LED/M	2219 LM/M	E A ↑ G	SDCM3			
1005856	smartLED L2422	24 V DC INPUT	7 W/M	3000 K CRI>90	133 LED/M	733 LM/M	E A ↑ G	SDCM3			
1004670	smartLED L2422	24 V DC INPUT	22 W/M	4000 K CRI>90	133 LED/M	2323 LM/M	E A ↑ G	SDCM3			
1004669	smartLED L2422	24 V DC INPUT	12 W/M	4000 K CRI>90	133 LED/M	1228 LM/M	E A ↑ G	SDCM3			

LED SYSTEMS

1.190 smartLED L2422

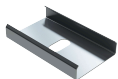
ART. NO.	DESIGNATION	CHARACTERISTICS						
1005859	smartLED L2422	24 V DC INPUT	18 W/M	4000 K CRI>90	133 LED/M	1861 LM/M		SDCM3
1005858	smartLED L2422	24 V DC INPUT	7 W/M	4000 K CRI>90	133 LED/M	767 LM/M		SDCM3

Lighting design

RELUX®

click on the Relux icon to access our lighting design data directly

Accessories



Art. No.
3100020



Art. No.
1006880



Art. No.
1005713



Art. No.
1005874



Art. No.
1006313





Art. No.
1006314

ART. NO.	DESIGNATION
3100020	
2002095	IP65 protective coating
2002091	Transparent encapsulation, IP67
1006880	smartCONN connection connector straight
1005713	smartCONN connector to power supply 90°
1005874	smartCONN flat conductor through-wiring
1006313	smartCONN linear connector
1006314	smartCONN edge connector 90°

Technical data

Storage temperature	-25 ... +50 °C
Max. surface temperature	65 °C
Shock rating	IK03
Protection type (IP)	IP20
Ambient temperature t_a	25 °C
Service life L80B10 (h) @ $t_a = 25^\circ\text{C}$	50000 h

1 kitchen ground floor **7** **8** **9**
5 smartLED 1919 45° / 11W/m / 2700K / IP20 **11**
4 Art. Nr. : 1000881 **6** 24V **2**
3 Länge: 2800 mm **10** smaterion ag, Zeughausstrasse 10, 8887 Mels
6 Länge tot: 11000 mm **1/2**

CE  

209583-01010100

- 1** Position, e.g. kitchen
- 2** Profile part for multi-part lengths, e.g. $\frac{1}{3}$, $\frac{2}{3}$, $\frac{3}{3}$
- 3** Length profile
- 4** Item number
- 5** Profile type, e.g. smartLED 1216
- 6** Voltage, e.g. 24 V
- 7** Power, e.g. 23W/m
- 8** Color temperature, e.g. 3000K
- 9** IP protection, e.g. IP20
- 10** Manufacturer address
- 11** QR code with unique identification ID

Electrical connection



1: V+
2: V-



1: V+
2: WW(-)
3: CW(-)

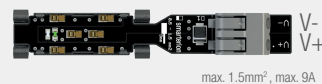


1: V+ 3: G(-)
2: B(-) 4: R(-)



1: V+ 4: R(-)
2: B(-) 5: W(-)
3: G(-)

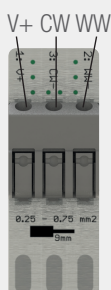
smartCONN System



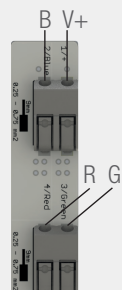
smartWIRE



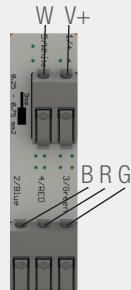
smartWIRE



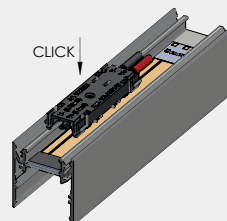
smartWIRE



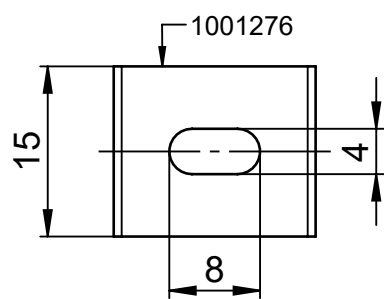
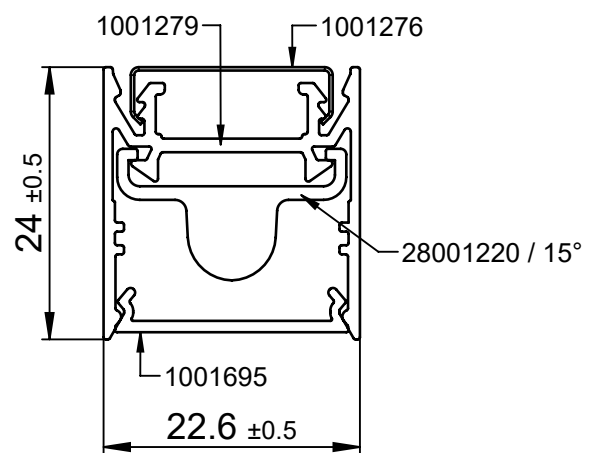
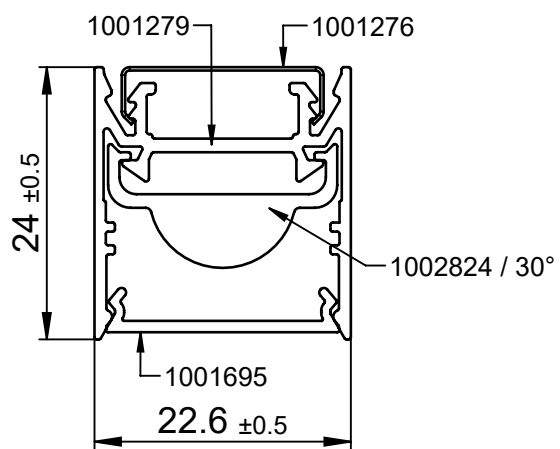
smartWIRE



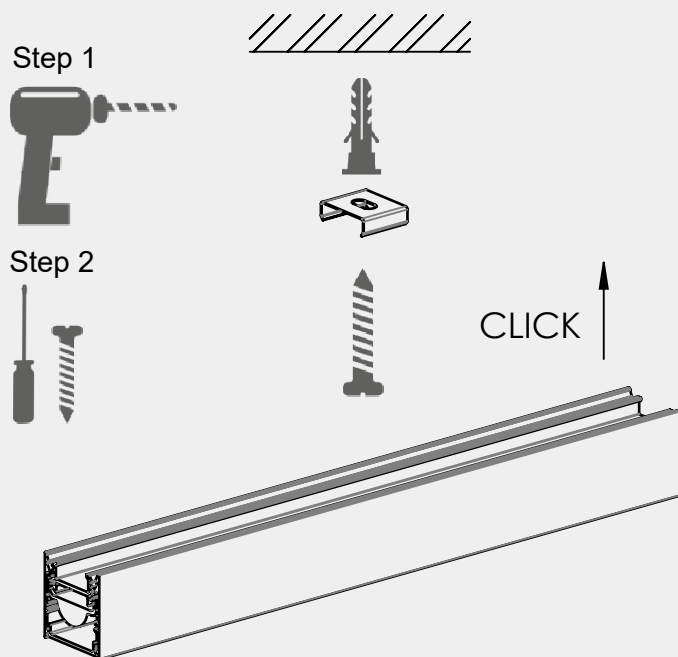
CLICK



Dimensions



Assembly instructions



When fitting the clamp, make sure that it can still be turned slightly, otherwise it can cause cracking noises due to thermal expansion.

LED SYSTEMS

1.190 smartLED L2422

Cleaning and care

Wipe the luminaire clean using a damp, lint-free cloth. Do not scrub! If heavily soiled, wipe clean with a mild solution of warm soapy water (microfibre cloth and washing-up liquid). Do not use a scouring agent. Do not rub the luminaire dry, as the resulting static may damage the electronic components beyond repair.

Warnings

The equipment may only be installed and put into service by authorised technical personnel (electrical fitters). The luminaire is designed solely for lighting applications and is to be installed according to the installation regulations. Any other form of use or installation is considered to be improper. Failure to comply with the installation instructions can damage the luminaire beyond repair. Return to the manufacturer if any defects are identified. The installation instructions must be retained for future reference. Subject to technical changes. Not to be installed on a wet or conductive substrate. The luminaire is only to be installed, put into service or modified in any way by authorised skilled personnel (a qualified electrician). National installation regulations must be observed. Before any work is performed on the luminaire, it must be disconnected from mains. Hot plug-in is not an option and may cause damage to the luminaire! The manufacturer is not liable for damage resulting from improper/faulty installation or operation, or from unauthorised modifications to the luminaire. The light source contained in this luminaire is only to be replaced by the manufacturer, a service technician authorised by the manufacturer or a similarly qualified person. Caution, risk of electric shock! In the event of questions or queries, please contact the manufacturer.



Disconnect the luminaire from the power supply.



Caution, risk of electric shock!



DISPOSAL

The packaging must be recycled via the DSD (Green Dot) scheme or its equivalent. Dispose of the packaging correctly sorted. Waste electrical and electronic equipment must never be disposed of together with household waste. In accordance with the EU directives, the device must be disposed of in an orderly manner at the end of its service life. This means having the materials contained in the device recycled to avoid polluting the environment. Take the waste equipment to a collection point for electrical and electronic waste or to a recycling depot. For further information, please contact your local waste disposal service or your local authority.



The LED board(s) can only be replaced by smarтерion as the manufacturer. Please do not attempt to replace the components yourself, as this will void the warranty and CE conformity.

IP20

Protected against ingress of solid foreign objects with a diameter of more than 12.5 mm.



Class III luminaires for operation at safety extra-low voltage (SELV)