

DATA SHEET

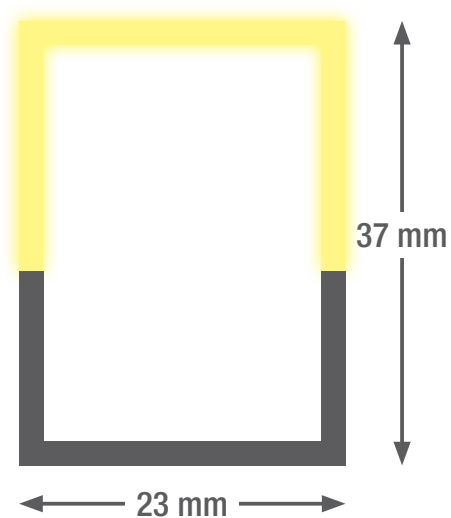
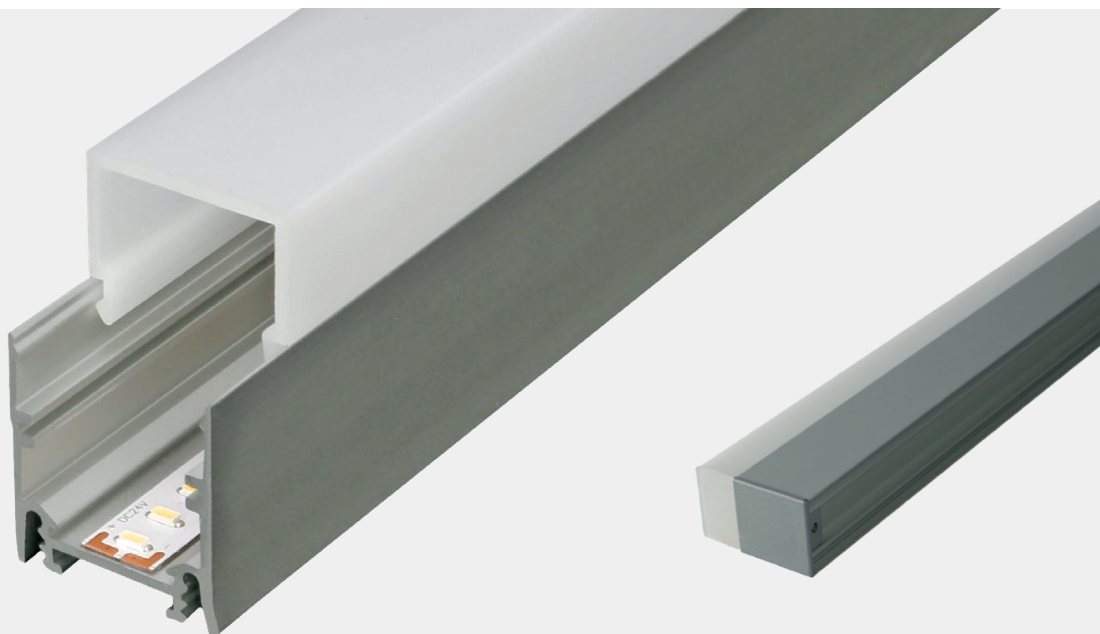
smartLED U3722

An elegant, high-quality LED light line made from anodised aluminium that meets the highest demands. Thanks to its variable length, the light line can be used as a single luminaire or as a strip light. As a result, uniform illumination is ensured from end to end. The mounting brackets are concealed and are even height-adjustable to compensate for uneven ceilings.

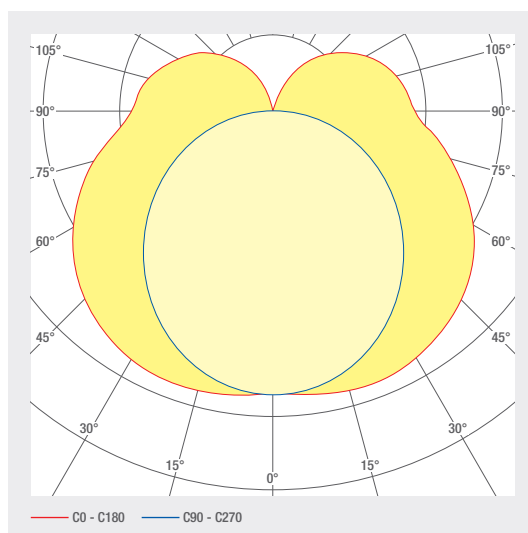
- Anodised aluminium channel
- Definable cable tap
- Opal PC cover for completely uniform illumination
- Die-cast aluminium end caps, painted in profile colour, no visible screws
- Service life: 50 000 h LM-80 > 50 000 h
- Light colors: 2700 K / 3000 K / 4000 K / 6500 K / TW / RGB(W)
- Control gear to be placed externally
- Halogen-free connection cable
- Optional: RAL or NCS powder coating
- Concealed mounting brackets

LED SYSTEMS

1.180 smartLED U3722



Profile length up to 5 m one-piece, greater than 5 m multi-piece



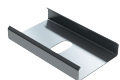
ART. NO.	DESIGNATION	CHARACTERISTICS									
1001558	smartLED U3722	24 V DC INPUT	25.8 W/M	DIFFUSED BEAM	RGB	120 LED/M					
1001560	smartLED U3722	24 V DC INPUT	19.2 W/M	DIFFUSED BEAM	RGBW 6500 K	98 LED/M					
1001559	smartLED U3722	24 V DC INPUT	19.2 W/M	DIFFUSED BEAM	RGBW 8000 K	98 LED/M					
1001561	smartLED U3722	24 V DC INPUT	19.2 W/M	DIFFUSED BEAM	RGBWW 3000 K	98 LED/M					
1002865	smartLED U3722	24 V DC INPUT	22 W/M	DIFFUSED BEAM	2700 K CRI>80	133 LED/M	2183 LM/M	D A ↑ G	SDCM3		
1002922	smartLED U3722	24 V DC INPUT	12 W/M	DIFFUSED BEAM	2700 K CRI>80	133 LED/M	1153 LM/M	D A ↑ G	SDCM3		
1002923	smartLED U3722	24 V DC INPUT	12 W/M	DIFFUSED BEAM	3000 K CRI>80	133 LED/M	1195 LM/M	D A ↑ G	SDCM3		
1002866	smartLED U3722	24 V DC INPUT	22 W/M	DIFFUSED BEAM	3000 K CRI>80	133 LED/M	2262 LM/M	D A ↑ G	SDCM3		
1002924	smartLED U3722	24 V DC INPUT	12 W/M	DIFFUSED BEAM	4000 K CRI>80	133 LED/M	1270 LM/M	D A ↑ G	SDCM3		
1002867	smartLED U3722	24 V DC INPUT	22 W/M	DIFFUSED BEAM	4000 K CRI>80	133 LED/M	2404 LM/M	D A ↑ G	SDCM3		
1004624	smartLED U3722	24 V DC INPUT	18 W/M	DIFFUSED BEAM	2700 - 6500 K CRI>80	120 LED/M	1380 LM/M	E A ↑ G	SDCM3		
1001553	smartLED U3722	24 V DC INPUT	22 W/M	DIFFUSED BEAM	2700 K CRI>90	133 LED/M	1882 LM/M	E A ↑ G	SDCM3		
1001557	smartLED U3722	24 V DC INPUT	12 W/M	DIFFUSED BEAM	2700 K CRI>90	133 LED/M	994 LM/M	E A ↑ G	SDCM3		
1001556	smartLED U3722	24 V DC INPUT	12 W/M	DIFFUSED BEAM	3000 K CRI>90	133 LED/M	1020 LM/M	E A ↑ G	SDCM3		
1001552	smartLED U3722	24 V DC INPUT	22 W/M	DIFFUSED BEAM	3000 K CRI>90	133 LED/M	1930 LM/M	E A ↑ G	SDCM3		
1001555	smartLED U3722	24 V DC INPUT	12 W/M	DIFFUSED BEAM	4000 K CRI>90	133 LED/M	1068 LM/M	E A ↑ G	SDCM3		
1001551	smartLED U3722	24 V DC INPUT	22 W/M	DIFFUSED BEAM	4000 K CRI>90	133 LED/M	2020 LM/M	E A ↑ G	SDCM3		

Lighting design

RELUX®

click on the Relux icon to access our lighting design data directly

Accessories



Art. No.
3100020



Art. No.
1006880



Art. No.
1005713



Art. No.
1005874



Art. No.
1006313



Art. No.
1006314

ART. NO.

DESIGNATION

3100020

2002095

IP65 protective coating

2002091

Transparent encapsulation, IP67

1006880

smartCONN connection connector straight

1005713

smartCONN connector to power supply 90°

1005874

smartCONN flat conductor through-wiring

1006313

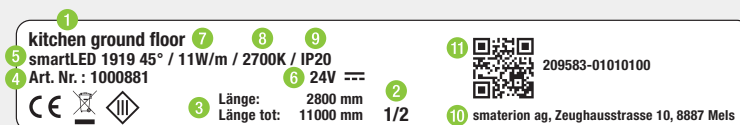
smartCONN linear connector

1006314

smartCONN edge connector 90°

Technical data

Storage temperature	-25 ... +50 °C
Max. surface temperature	65 °C
Shock rating	IK03
Protection type (IP)	IP20
Ambient temperature t_a	25 °C
Service life L80B10 (h) @ $t_a = 25^\circ\text{C}$	50000 h



- 1 Position, e.g. kitchen
- 7 Power, e.g. 23W/m
- 2 Profile part for multi-part lengths, e.g. $\frac{1}{3}$, $\frac{2}{3}$, $\frac{3}{3}$
- 8 Color temperature, e.g. 3000K
- 3 Length profile
- 9 IP protection, e.g. IP20
- 4 Item number
- 10 Manufacturer address
- 5 Profile type, e.g. smartLED 1216
- 11 QR code with unique identification ID
- 6 Voltage, e.g. 24 V

Electrical connection



1: V+
2: V-



1: V+
2: WW(-)
3: CW(-)

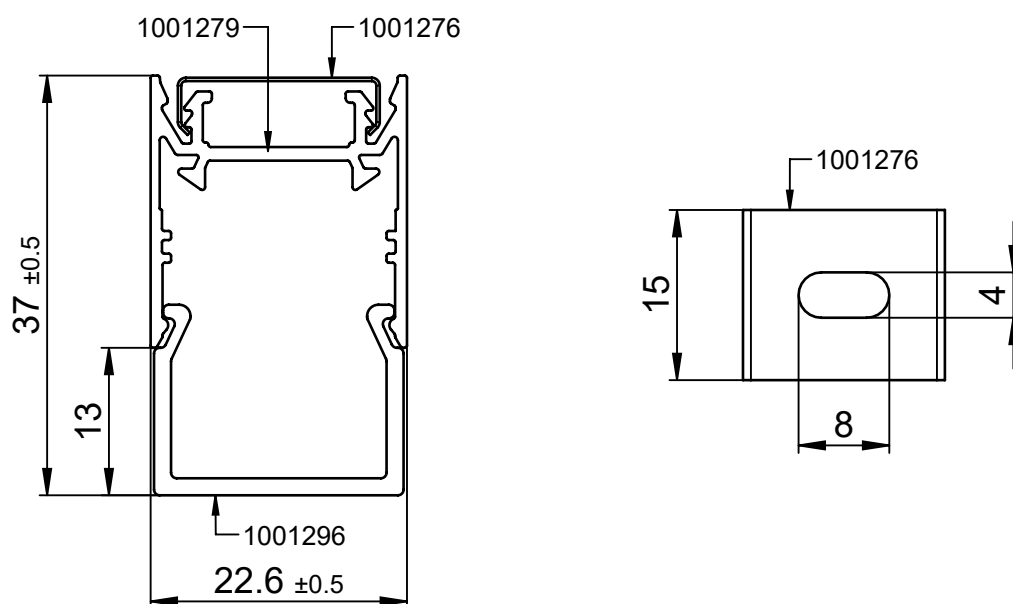


1: V+ 3: G(-)
2: B(-) 4: R(-)

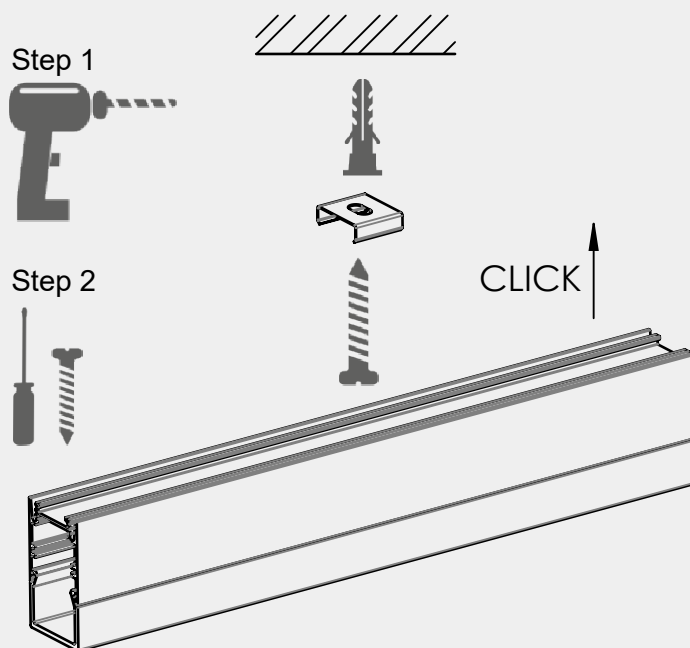


1: V+ 4: R(-)
2: B(-) 5: W(-)
3: G(-)

Dimensions



Assembly instructions



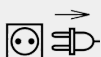
When fitting the clamp, make sure that it can still be turned slightly, otherwise it can cause cracking noises due to thermal expansion.

Cleaning and care

Wipe the luminaire clean using a damp, lint-free cloth. Do not scrub! If heavily soiled, wipe clean with a mild solution of warm soapy water (microfibre cloth and washing-up liquid). Do not use a scouring agent. Do not rub the luminaire dry, as the resulting static may damage the electronic components beyond repair.

Warnings

The equipment may only be installed and put into service by authorised technical personnel (electrical fitters). The luminaire is designed solely for lighting applications and is to be installed according to the installation regulations. Any other form of use or installation is considered to be improper. Failure to comply with the installation instructions can damage the luminaire beyond repair. Return to the manufacturer if any defects are identified. The installation instructions must be retained for future reference. Subject to technical changes. Not to be installed on a wet or conductive substrate. The luminaire is only to be installed, put into service or modified in any way by authorised skilled personnel (a qualified electrician). National installation regulations must be observed. Before any work is performed on the luminaire, it must be disconnected from mains. Hot plug-in is not an option and may cause damage to the luminaire! The manufacturer is not liable for damage resulting from improper/faulty installation or operation, or from unauthorised modifications to the luminaire. The light source contained in this luminaire is only to be replaced by the manufacturer, a service technician authorised by the manufacturer or a similarly qualified person. Caution, risk of electric shock! In the event of questions or queries, please contact the manufacturer.



Disconnect the luminaire from the power supply.



Caution, risk of electric shock!



DISPOSAL

The packaging must be recycled via the DSD (Green Dot) scheme or its equivalent. Dispose of the packaging correctly sorted. Waste electrical and electronic equipment must never be disposed of together with household waste. In accordance with the EU directives, the device must be disposed of in an orderly manner at the end of its service life. This means having the materials contained in the device recycled to avoid polluting the environment. Take the waste equipment to a collection point for electrical and electronic waste or to a recycling depot. For further information, please contact your local waste disposal service or your local authority.



The LED board(s) can only be replaced by smarтерion as the manufacturer. Please do not attempt to replace the components yourself, as this will void the warranty and CE conformity.

IP20

Protected against ingress of solid foreign objects with a diameter of more than 12.5 mm.



Class III luminaires for operation at safety extra-low voltage (SELV)