



DATA SHEET

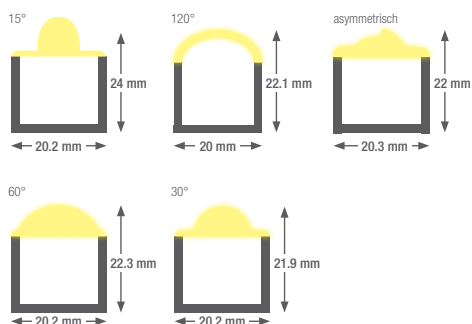
smartLED 1816

An elegant, high-quality LED light line made from anodised aluminium that meets the highest demands. Thanks to its variable length, the light line can be used as a single luminaire or as a strip light. As a result, fully uniform illumination is ensured from end to end.

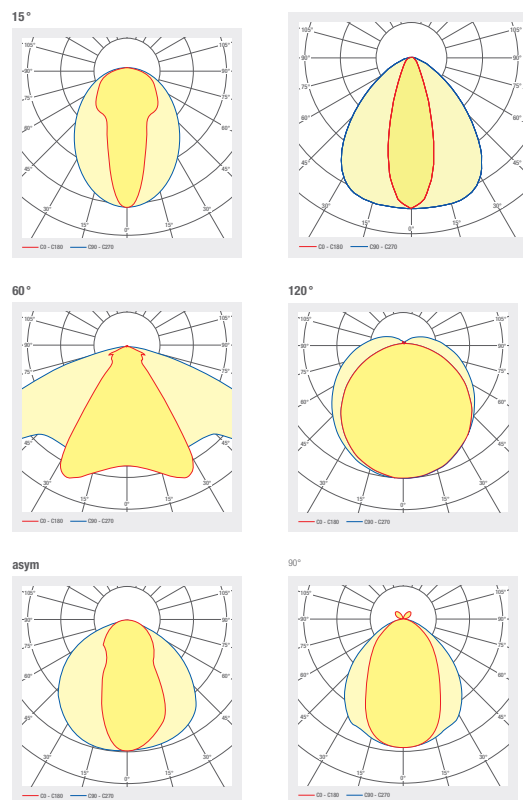
- Anodised aluminium channel
- Definable cable tap
- Cover made of opal PMMA for absolutely homogeneous illumination
- Die-cast aluminium end caps, painted in profile colour, no visible screws
- Optics 15° / 30° / 60° / 90° / 120° or asymmetrical available
- Service life: 50 000 h LM-80 > 50 000 h
- Light colors: 2700 K / 3000 K / 4000 K / 6500 K / TW / RGB(W)
- Control gear to be placed externally
- Halogen-free connection cable
- Optional: RAL or NCS powder coating
- Cable routing in the profile possible




LED SYSTEMS

1.120 smartLED 1816



Profile length up to 5 m one-piece, greater than 5 m multi-piece



ART. NO.	DESIGNATION	CHARACTERISTICS									
1003716	smartLED 1816	24 V DC INPUT	25.8 W/M		RGB	120 LED/M					
1003719	smartLED 1816	24 V DC INPUT	19.2 W/M		RGBW 6000 K	98 LED/M					
1003717	smartLED 1816	24 V DC INPUT	19.2 W/M		RGBW 8000 K	98 LED/M					
1003718	smartLED 1816	24 V DC INPUT	19.2 W/M		RGBW 3000 K	98 LED/M					
1003723	smartLED 1816	24 V DC INPUT	12 W/M	2700 K CRI>80	133 LED/M	1615 LM/M		A ↑ G	SDCM3		
1003709	smartLED 1816	24 V DC INPUT	22 W/M	2700 K CRI>80	133 LED/M	3056 LM/M		A ↑ G	SDCM3		
1003724	smartLED 1816	24 V DC INPUT	12 W/M	3000 K CRI>80	133 LED/M	1674 LM/M		A ↑ G	SDCM3		
1003721	smartLED 1816	24 V DC INPUT	22 W/M	3000 K CRI>80	133 LED/M	3167 LM/M		A ↑ G	SDCM3		
1003722	smartLED 1816	24 V DC INPUT	22 W/M	4000 K CRI>80	133 LED/M	3365 LM/M		A ↑ G	SDCM3		
1003725	smartLED 1816	24 V DC INPUT	12 W/M	4000 K CRI>80	133 LED/M	1778 LM/M		A ↑ G	SDCM3		
1003711	smartLED 1816	24 V DC INPUT	22 W/M	2700 K CRI>90	133 LED/M	2635 LM/M		A ↑ G	SDCM3		
1003707	smartLED 1816	24 V DC INPUT	12 W/M	2700 K CRI>90	133 LED/M	1392 LM/M		A ↑ G	SDCM3		
1003708	smartLED 1816	24 V DC INPUT	12 W/M	3000 K CRI>90	133 LED/M	1428 LM/M		A ↑ G	SDCM3		
1003712	smartLED 1816	24 V DC INPUT	22 W/M	3000 K CRI>90	133 LED/M	2702 LM/M		A ↑ G	SDCM3		
1003710	smartLED 1816	24 V DC INPUT	12 W/M	4000 K CRI>90	133 LED/M	1495 LM/M		A ↑ G	SDCM3		
1003715	smartLED 1816	24 V DC INPUT	22 W/M	4000 K CRI>90	133 LED/M	2829 LM/M		A ↑ G	SDCM3		

Lighting design

RELUX®

click on the Relux icon to access our lighting design data directly

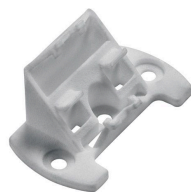
Accessories



Art. No.
28001319



Art. No.
28003104



Art. No.
28003107

ART. NO.	DESIGNATION
28001319	Horizontal mounting bracket for profile 1816, adjustable between -60° and +60°, steel
28003104	Mounting bracket for profile 1816 horizontal (0°), white plastic
28003106	Mounting bracket for profile 1816 horizontal (30°), white plastic
28003107	Mounting bracket for profile 1816 horizontal (45°), white plastic
28003108	Mounting bracket for profile 1816 horizontal (60°), white plastic
2002095	IP65 protective coating
2002094	Transparent encapsulation, IP67

Technical data

Storage temperature	-25 ... +50 °C
Max. surface temperature	75 °C
Shock rating	IK03
Protection type (IP)	IP20
Ambient temperature t_a	25 °C
Input voltage	24 V DC
Service life L80B10 (h) @ $t_a = 25^\circ\text{C}$	50000 h

1
kitchen ground floor
5 smartLED 1919 45° / 11W/m / 2700K / IP20
4 Art. Nr. : 1000881
CE

7
24V
6
Länge: 2800 mm
Länge tot: 11000 mm
3

8
2700K
9
IP20
11

10
smaterion ag, Zeughausstrasse 10, 8887 Mels
209583-01010100

- | | |
|---|--|
| 1 Position, e.g. kitchen | 7 Power, e.g. 23W/m |
| 2 Profile part for multi-part lengths, e.g. 1/3, 2/3, 3/3 | 8 Color temperature, e.g. 3000K |
| 3 Length profile | 9 IP protection, e.g. IP20 |
| 4 Item number | 10 Manufacturer address |
| 5 Profile type, e.g. smartLED 1216 | 11 QR code with unique identification ID |
| 6 Voltage, e.g. 24 V | |

Electrical connection



1: V+
2: V-



1: V+
2: WW(-)
3: CW(-)

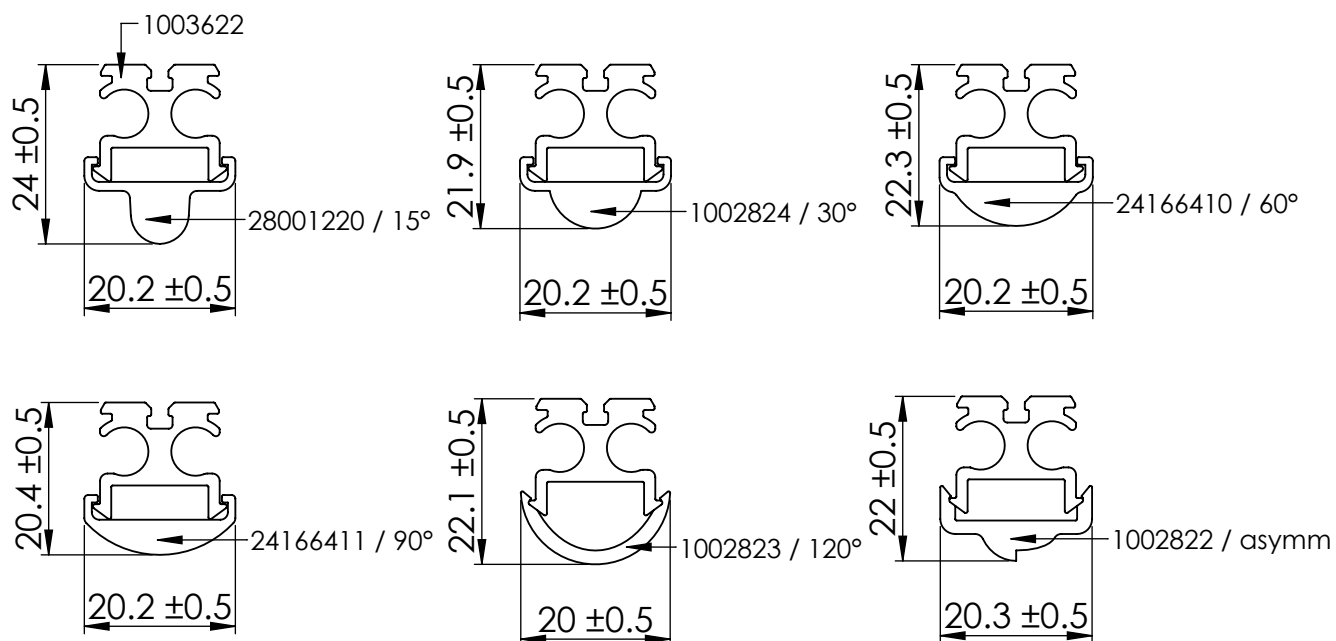


1: V+ 3: G(-)
2: B(-) 4: R(-)



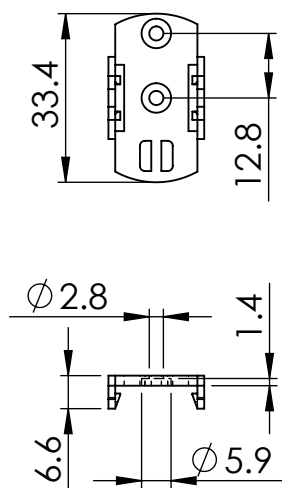
1: V+ 4: R(-)
2: B(-) 5: W(-)
3: G(-)

Dimensions

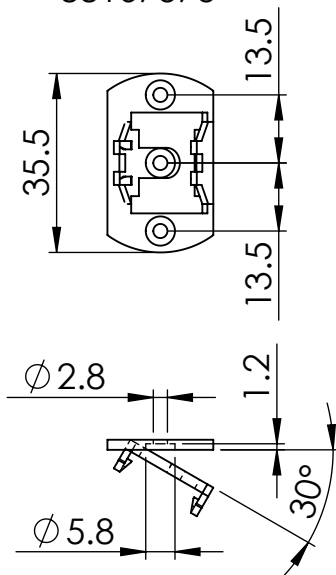


Dimensions

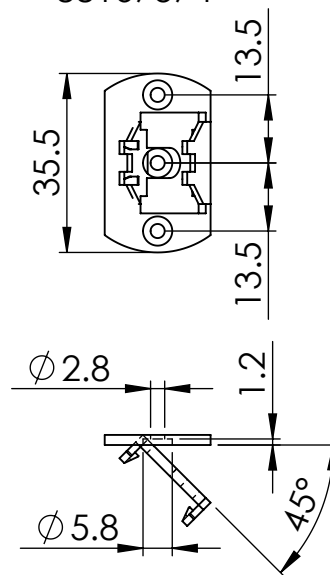
88166859



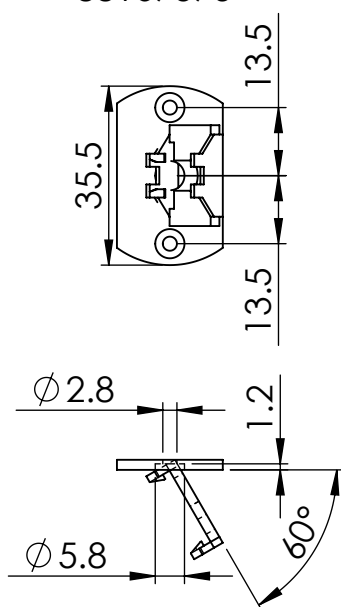
88167373



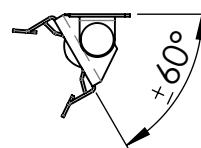
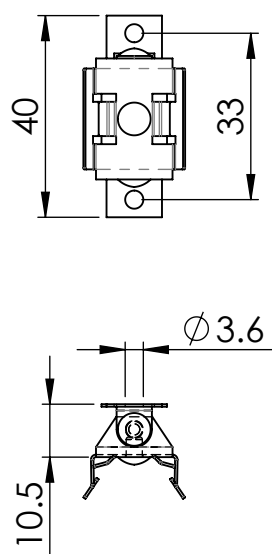
88167374



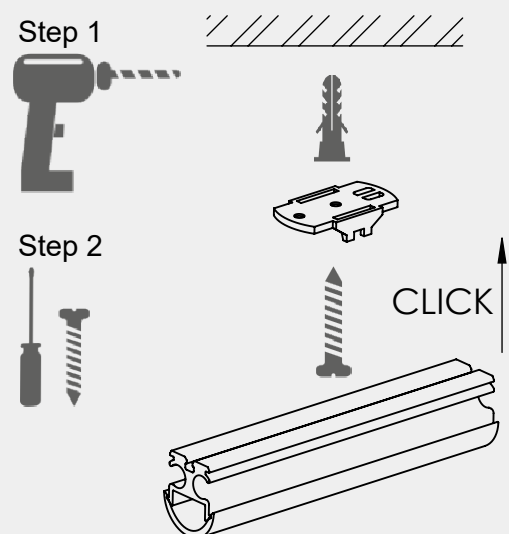
88167375



28001319



Assembly instructions



LED SYSTEMS

1.120 smartLED 1816

Cleaning and care

Wipe the luminaire clean using a damp, lint-free cloth. Do not scrub! If heavily soiled, wipe clean with a mild solution of warm soapy water (microfibre cloth and washing-up liquid). Do not use a scouring agent. Do not rub the luminaire dry, as the resulting static may damage the electronic components beyond repair.

Warnings

The equipment may only be installed and put into service by authorised technical personnel (electrical fitters). The luminaire is designed solely for lighting applications and is to be installed according to the installation regulations. Any other form of use or installation is considered to be improper. Failure to comply with the installation instructions can damage the luminaire beyond repair. Return to the manufacturer if any defects are identified. The installation instructions must be retained for future reference. Subject to technical changes. Not to be installed on a wet or conductive substrate. The luminaire is only to be installed, put into service or modified in any way by authorised skilled personnel (a qualified electrician). National installation regulations must be observed. Before any work is performed on the luminaire, it must be disconnected from mains. Hot plug-in is not an option and may cause damage to the luminaire! The manufacturer is not liable for damage resulting from improper/faulty installation or operation, or from unauthorised modifications to the luminaire. The light source contained in this luminaire is only to be replaced by the manufacturer, a service technician authorised by the manufacturer or a similarly qualified person. Caution, risk of electric shock! In the event of questions or queries, please contact the manufacturer.



Disconnect the luminaire from the power supply.



Caution, risk of electric shock!



DISPOSAL

The packaging must be recycled via the DSD (Green Dot) scheme or its equivalent. Dispose of the packaging correctly sorted. Waste electrical and electronic equipment must never be disposed of together with household waste. In accordance with the EU directives, the device must be disposed of in an orderly manner at the end of its service life. This means having the materials contained in the device recycled to avoid polluting the environment. Take the waste equipment to a collection point for electrical and electronic waste or to a recycling depot. For further information, please contact your local waste disposal service or your local authority.



The LED board(s) can only be replaced by smarтерion as the manufacturer. Please do not attempt to replace the components yourself, as this will void the warranty and CE conformity.

IP20

Protected against ingress of solid foreign objects with a diameter of more than 12.5 mm.



Class III luminaires for operation at safety extra-low voltage (SELV)