

## DATA SHEET

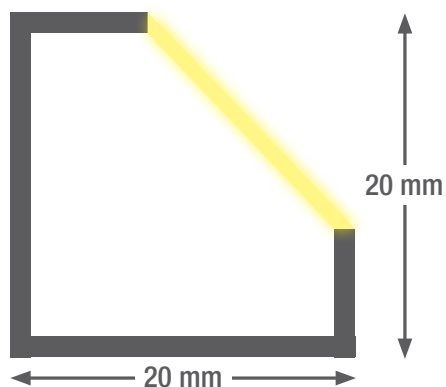
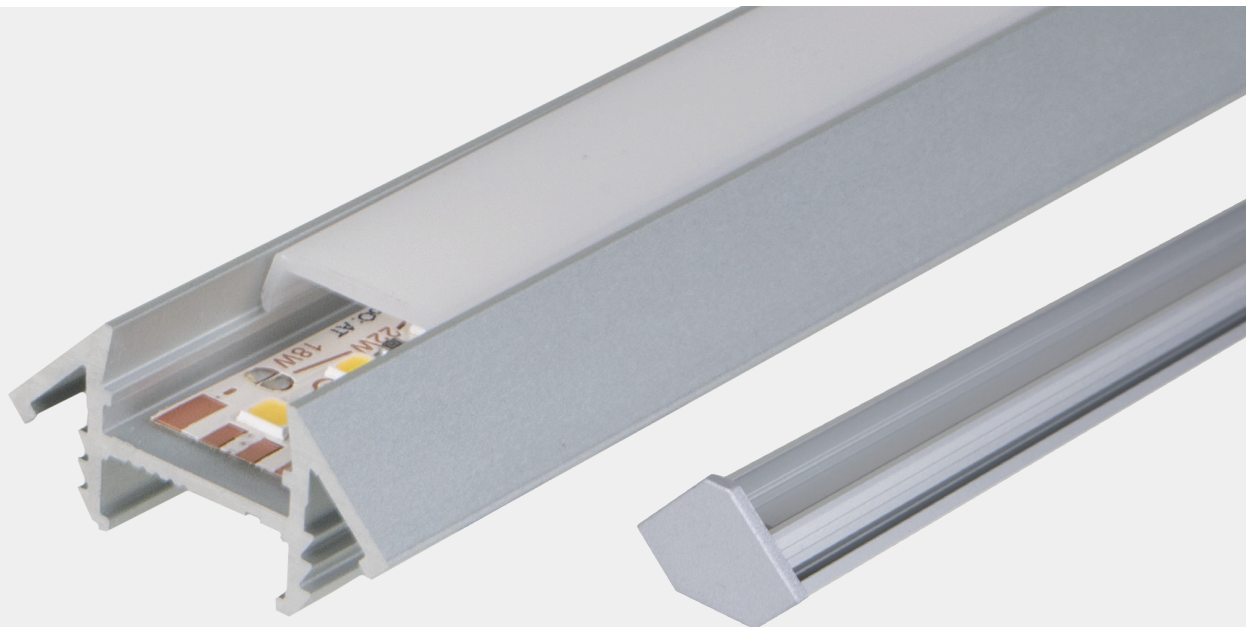
# smartLED 2020 45°

An elegant high-quality LED light line made from anodised aluminium that meets the highest demands. Thanks to its variable length, the light line can be used as a single luminaire or as a strip light. As a result, fully uniform illumination is ensured from end to end.

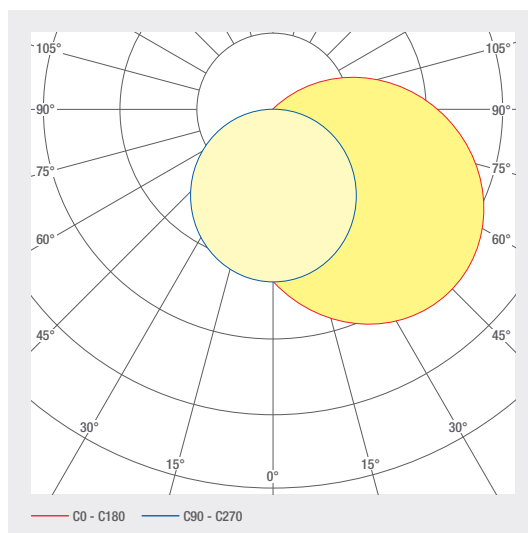
- Anodised aluminium channel
- Definable cable tap
- Cover made of opal PMMA for absolutely homogeneous illumination
- Die-cast aluminium end caps, painted in profile colour
- Service life: 50 000 h LM-80 > 50 000 h
- Light colors: 2700 K / 3000 K / 4000 K / 6500 K / TW / RGB(W)
- Color tolerance: 3-step MacAdam ellipse
- Control gear to be placed externally
- Halogen-free connection cable
- Optional: RAL or NCS powder coating

## LED SYSTEMS

# 1.111 smartLED 2020 45°




Profile length up to 5 m one-piece, greater than 5 m multi-piece





## 1.111 smartLED 2020 45°

## LED SYSTEMS

ART. NO.	DESIGNATION	CHARACTERISTICS									
1006043	smartLED 2020 45°	24 V DC INPUT	25.8 W/M	DIFFUSED BEAM	RGB	120 LED/M					
1006044	smartLED 2020 45°	24 V DC INPUT	19.2 W/M	DIFFUSED BEAM	RGBW 6500 K	98 LED/M					
1006045	smartLED 2020 45°	24 V DC INPUT	19.2 W/M	DIFFUSED BEAM	RGBW 8000 K	98 LED/M					
1006046	smartLED 2020 45°	24 V DC INPUT	19.2 W/M	DIFFUSED BEAM	RGBWW 3000 K	98 LED/M					
1006050	smartLED 2020 45°	24 V DC INPUT	7 W/M	DIFFUSED BEAM	2700 K CRI>80	133 LED/M	661 LM/M		SDCM3		
1006048	smartLED 2020 45°	24 V DC INPUT	18 W/M	DIFFUSED BEAM	2700 K CRI>80	133 LED/M	1603 LM/M		SDCM3		
1006049	smartLED 2020 45°	24 V DC INPUT	22 W/M	DIFFUSED BEAM	2700 K CRI>80	133 LED/M	2001 LM/M		SDCM3		
1006047	smartLED 2020 45°	24 V DC INPUT	12 W/M	DIFFUSED BEAM	2700 K CRI>80	133 LED/M	1057 LM/M		SDCM3		
1006053	smartLED 2020 45°	24 V DC INPUT	22 W/M	DIFFUSED BEAM	3000 K CRI>80	133 LED/M	2074 LM/M		SDCM3		
1006052	smartLED 2020 45°	24 V DC INPUT	18 W/M	DIFFUSED BEAM	3000 K CRI>80	133 LED/M	1661 LM/M		SDCM3		
1006051	smartLED 2020 45°	24 V DC INPUT	12 W/M	DIFFUSED BEAM	3000 K CRI>80	133 LED/M	1096 LM/M		SDCM3		
1006054	smartLED 2020 45°	24 V DC INPUT	7 W/M	DIFFUSED BEAM	3000 K CRI>80	133 LED/M	685 LM/M		SDCM3		
1006056	smartLED 2020 45°	24 V DC INPUT	18 W/M	DIFFUSED BEAM	4000 K CRI>80	133 LED/M	1764 LM/M		SDCM3		
1006058	smartLED 2020 45°	24 V DC INPUT	7 W/M	DIFFUSED BEAM	4000 K CRI>80	133 LED/M	728 LM/M		SDCM3		
1006055	smartLED 2020 45°	24 V DC INPUT	12 W/M	DIFFUSED BEAM	4000 K CRI>80	133 LED/M	1164 LM/M		SDCM3		
1006057	smartLED 2020 45°	24 V DC INPUT	22 W/M	DIFFUSED BEAM	4000 K CRI>80	133 LED/M	2203 LM/M		SDCM3		
1006435	smartLED 2020 45°	24 V DC INPUT	18 W/M	DIFFUSED BEAM	2700 - 6500 K CRI>80	120 LED/M	1265 LM/M		SDCM3		
1006061	smartLED 2020 45°	24 V DC INPUT	22 W/M	DIFFUSED BEAM	2700 K CRI>90	133 LED/M	1725 LM/M		SDCM3		
1006060	smartLED 2020 45°	24 V DC INPUT	18 W/M	DIFFUSED BEAM	2700 K CRI>90	133 LED/M	1382 LM/M		SDCM3		
1006059	smartLED 2020 45°	24 V DC INPUT	12 W/M	DIFFUSED BEAM	2700 K CRI>90	133 LED/M	911 LM/M		SDCM3		
1006062	smartLED 2020 45°	24 V DC INPUT	7 W/M	DIFFUSED BEAM	2700 K CRI>90	133 LED/M	570 LM/M		SDCM3		
1006066	smartLED 2020 45°	24 V DC INPUT	7 W/M	DIFFUSED BEAM	3000 K CRI>90	133 LED/M	584 LM/M		SDCM3		
1006065	smartLED 2020 45°	24 V DC INPUT	22 W/M	DIFFUSED BEAM	3000 K CRI>90	133 LED/M	1769 LM/M		SDCM3		
1006064	smartLED 2020 45°	24 V DC INPUT	18 W/M	DIFFUSED BEAM	3000 K CRI>90	133 LED/M	1417 LM/M		SDCM3		
1006063	smartLED 2020 45°	24 V DC INPUT	12 W/M	DIFFUSED BEAM	3000 K CRI>90	133 LED/M	935 LM/M		SDCM3		
1006069	smartLED 2020 45°	24 V DC INPUT	22 W/M	DIFFUSED BEAM	4000 K CRI>90	133 LED/M	1852 LM/M		SDCM3		
1006067	smartLED 2020 45°	24 V DC INPUT	12 W/M	DIFFUSED BEAM	4000 K CRI>90	133 LED/M	979 LM/M		SDCM3		

## LED SYSTEMS

1.111 smartLED 2020 45°

ART. NO.	DESIGNATION	CHARACTERISTICS							
1006070	smartLED 2020 45°	24 V DC INPUT	7 W/M	DIFFUSED BEAM	4000 K CRI>90	133 LED/M	612 LM/M		SDCM3
1006068	smartLED 2020 45°	24 V DC INPUT	18 W/M	DIFFUSED BEAM	4000 K CRI>90	133 LED/M	1483 LM/M		SDCM3

## Lighting design

**RELUX®**

click on the Relux icon to access our lighting design data directly

## Accessories



Art. No.  
1005819



Art. No.  
1006880



Art. No.  
1005713



Art. No.  
1005874



Art. No.  
1006313

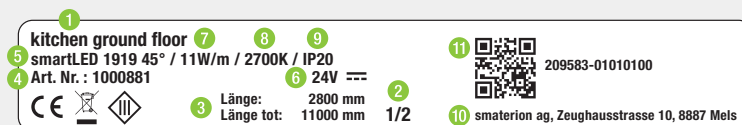


Art. No.  
1006314

ART. NO.	DESIGNATION
2002095	IP65 protective coating
1002358	Opal encapsulation, IP68
1005819	Mounting bracket
1006880	smartCONN connection connector straight
1005713	smartCONN connector to power supply 90°
1005874	smartCONN flat conductor through-wiring
1006313	smartCONN linear connector
1006314	smartCONN edge connector 90°

## Technical data

Storage temperature	-25 ... +50 °C
Max. surface temperature	75 °C
Shock rating	IK03
Protection type (IP)	IP20
Ambient temperature $t_a$	25 °C
Service life L80B10 (h) @ $t_a = 25^\circ\text{C}$	50000 h



- 1 Position, e.g. kitchen
- 2 Profile part for multi-part lengths, e.g.  $\frac{1}{3}$ ,  $\frac{2}{3}$ ,  $\frac{3}{3}$
- 3 Length profile
- 4 Item number
- 5 Profile type, e.g. smartLED 1216
- 6 Voltage, e.g. 24 V
- 7 Power, e.g. 23W/m
- 8 Color temperature, e.g. 3000K
- 9 IP protection, e.g. IP20
- 10 Manufacturer address
- 11 QR code with unique identification ID

## Electrical connection



1: V+  
2: V-



1: V+  
2: WW(-)  
3: CW(-)

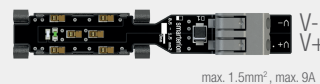


1: V+ 3: G(-)  
2: B(-) 4: R(-)



1: V+ 4: R(-)  
2: B(-) 5: W(-)  
3: G(-)

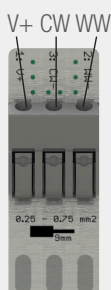
smartCONN System



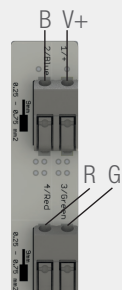
smartWIRE



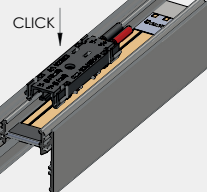
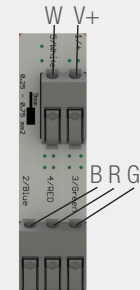
smartWIRE



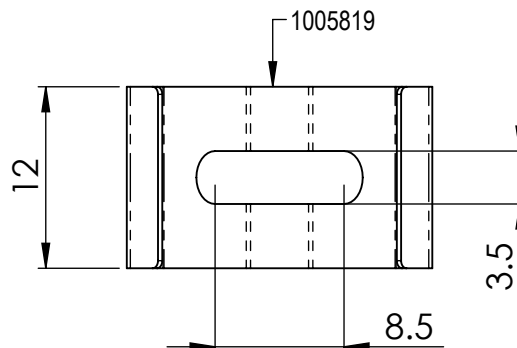
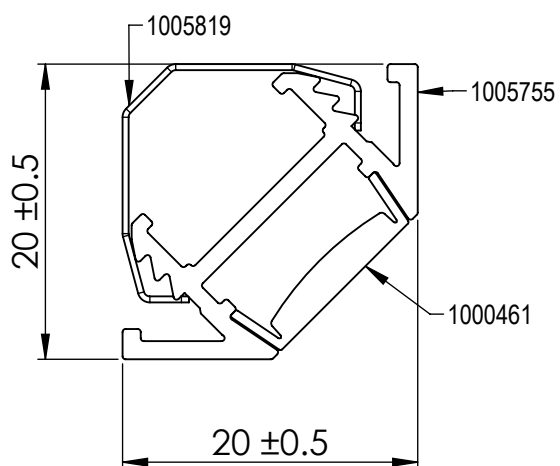
smartWIRE



smartWIRE



## Dimensions

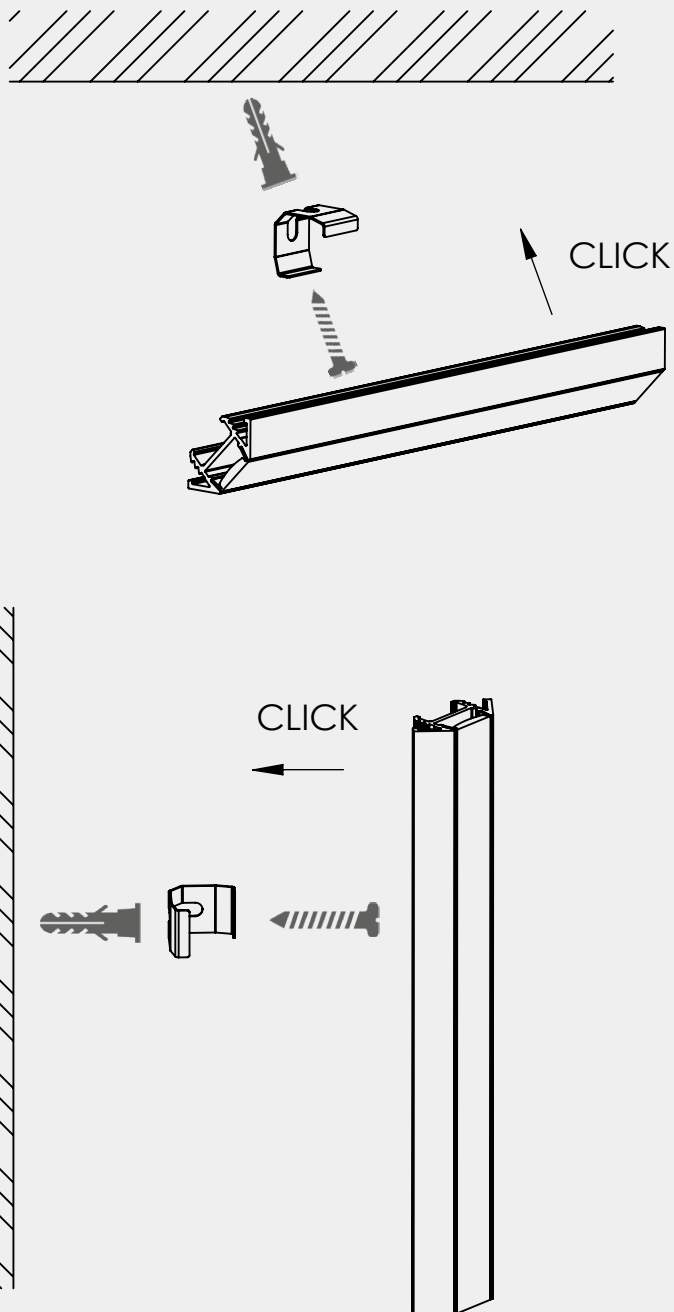


## Assembly instructions

### Step 1



### Step 2



When fitting the clamp, make sure that it can still be turned slightly, otherwise it can cause cracking noises due to thermal expansion.

## LED SYSTEMS

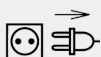
1.111 smartLED 2020 45°

### Cleaning and care

Wipe the luminaire clean using a damp, lint-free cloth. Do not scrub! If heavily soiled, wipe clean with a mild solution of warm soapy water (microfibre cloth and washing-up liquid). Do not use a scouring agent. Do not rub the luminaire dry, as the resulting static may damage the electronic components beyond repair.

### Warnings

The equipment may only be installed and put into service by authorised technical personnel (electrical fitters). The luminaire is designed solely for lighting applications and is to be installed according to the installation regulations. Any other form of use or installation is considered to be improper. Failure to comply with the installation instructions can damage the luminaire beyond repair. Return to the manufacturer if any defects are identified. The installation instructions must be retained for future reference. Subject to technical changes. Not to be installed on a wet or conductive substrate. The luminaire is only to be installed, put into service or modified in any way by authorised skilled personnel (a qualified electrician). National installation regulations must be observed. Before any work is performed on the luminaire, it must be disconnected from mains. Hot plug-in is not an option and may cause damage to the luminaire! The manufacturer is not liable for damage resulting from improper/faulty installation or operation, or from unauthorised modifications to the luminaire. The light source contained in this luminaire is only to be replaced by the manufacturer, a service technician authorised by the manufacturer or a similarly qualified person. Caution, risk of electric shock! In the event of questions or queries, please contact the manufacturer.



Disconnect the luminaire from the power supply.



Caution, risk of electric shock!



#### DISPOSAL

The packaging must be recycled via the DSD (Green Dot) scheme or its equivalent. Dispose of the packaging correctly sorted. Waste electrical and electronic equipment must never be disposed of together with household waste. In accordance with the EU directives, the device must be disposed of in an orderly manner at the end of its service life. This means having the materials contained in the device recycled to avoid polluting the environment. Take the waste equipment to a collection point for electrical and electronic waste or to a recycling depot. For further information, please contact your local waste disposal service or your local authority.



The LED board(s) can only be replaced by smarterion as the manufacturer. Please do not attempt to replace the components yourself, as this will void the warranty and CE conformity.

**IP20**

Protected against ingress of solid foreign objects with a diameter of more than 12.5 mm.



Class III luminaires for operation at safety extra-low voltage (SELV)